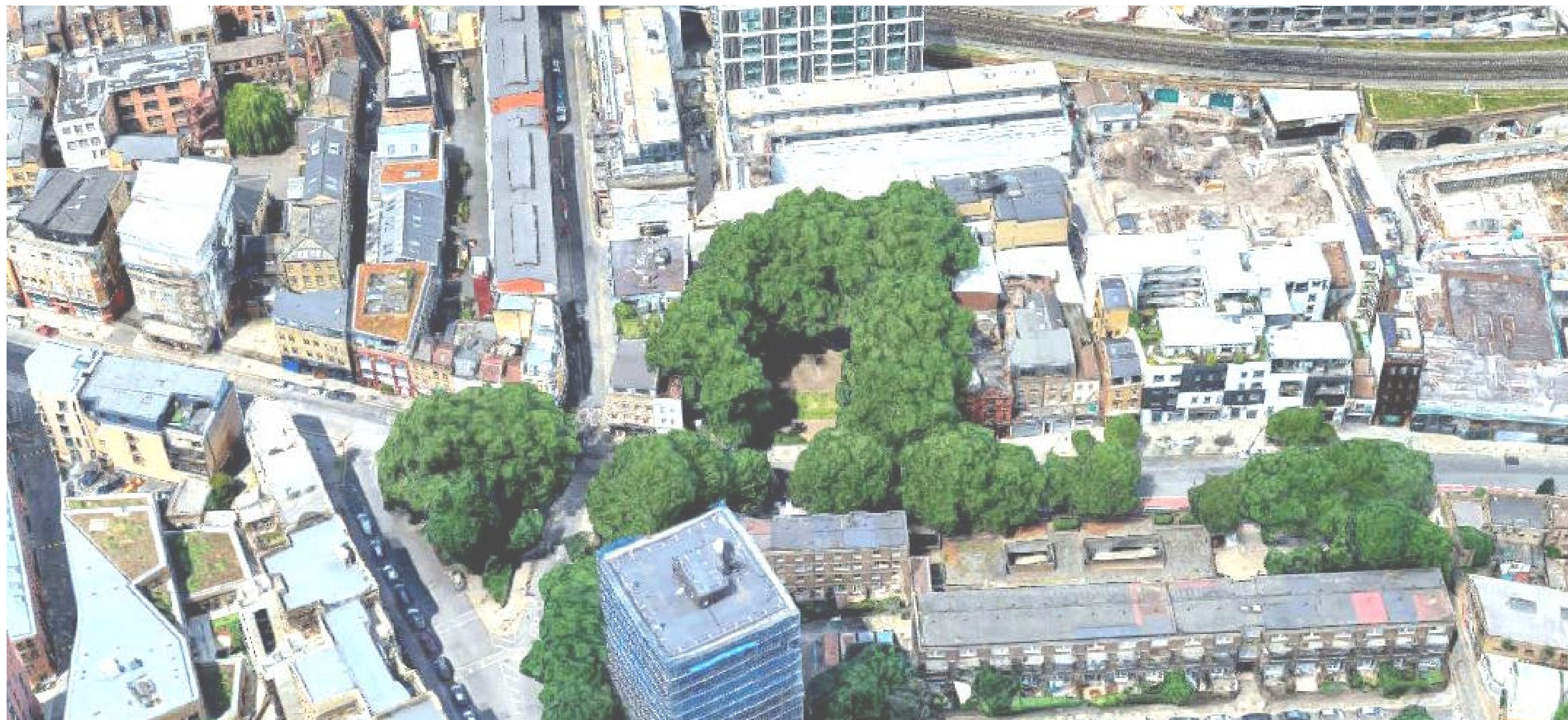


FAIRCHILDS GARDEN

DESIGN SUMMARY

ALA519PR03 P02



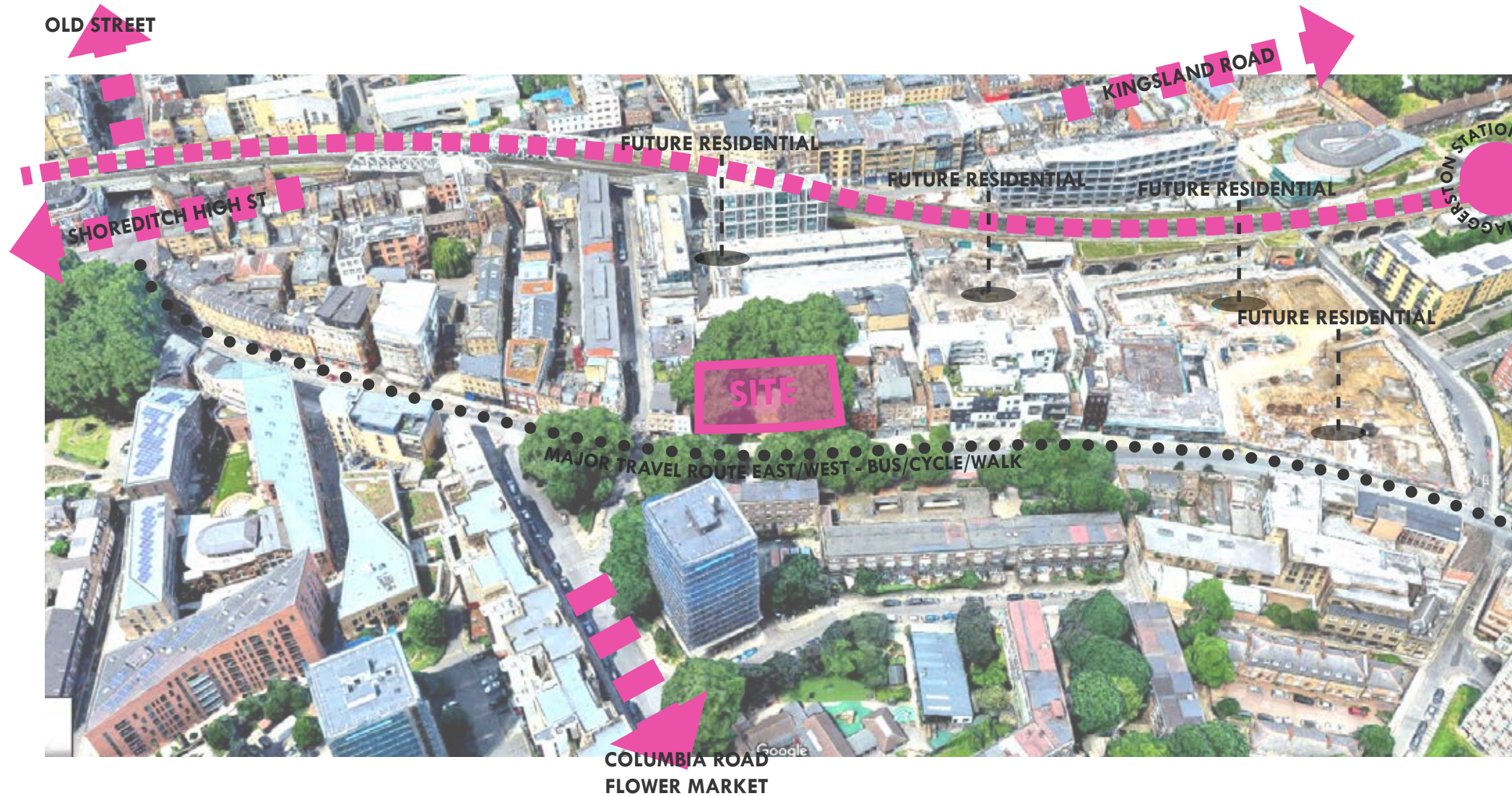
Unit 3.25 East London Works
75 Whitechapel Road
London E1 1DU

t: 0207 254 3332
e: hello@ares.eu.com
www.ares.eu.com



ares
LANDSCAPE
ARCHITECTS

INTRODUCTION 01



Fairchild's Garden, previously known as Hackney Road Recreational Ground, is a small park located on the busy Hackney Road.

Its in a prime location within Shoreditch, a short walk north of the Shoreditch High Street and Old Street junction, and is at the end of Columbia Road.

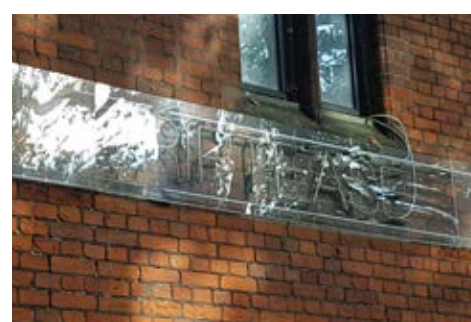
It is the former burial ground of St Leonard's Church and contains the remains of Thomas Fairchild, a notable horticulturist, as well as other historical remains.

The site is predominantly owned by the Diocese of London and managed and maintained by Hackney Council's Libraries, Leisure and Green Spaces Service as a recreational ground.

The site is bounded on three sides by buildings and is framed by majestic London plane trees. The space suffers from poor access with only one pedestrian entrance from Hackney Road. The majority of the site is taken up by a dilapidated tennis court which is no longer used.

The site is unwelcoming and underused and is predominantly used by street drinkers and local construction workers.

The Council wants to transform Fairchild's Garden into a safe, welcoming, flexible space which meets the needs of the local community.



AIMS & OBJECTIVES 02

PRECEDENT IMAGES

EXTENSIVE SEATING OPPORTUNITIES



INTEGRATED STREET ART



To create a welcoming, low maintenance, flexible space with improved connectivity to its surroundings. The space will;

- improve pedestrian access
- include a food & beverage kiosk
- celebrate the heritage of the site
- include planting influenced by Fairchild
- be welcoming to all
- showcase street art and installations
- have a bold street presence
- be an attractive place to socialise and relax
- be securable out of hours
- preserve the existing mature trees
- discourage anti-social behaviour
- ensure privacy of neighbouring properties
- be robust and low maintenance

SOCIABLE



STRUCTURES WORKING WITH/AROUND TREES



SYMPATHETIC GATED ACCESS

DESIGN LAYOUT 03



Possibility to introduce additional entrances allowing through routes

Footpaths allow circular walking routes through space

Shrub planting blocks access to adjacent properties

Raised decking provides informal seating opportunities beneath trees

Ample seating options to cope with busy times such as work day lunches

Open central space can be used for additional seating or art installations

Maintenance storage for volunteering community groups and schools

Kiosk providing food, drinks and public toilets

High quality planting provides attractive setting

New maintenance access hides Ye Olde Axe pub back of house

Feature fencing allows feeling of openness whilst allowing park to be secured at night

Wide entrance encourages users into park and improves public realm

FURNITURE



MATERIALS



PLANTING



3D VISUALISATIONS

