

# Growing Up in Hackney: Child-Friendly Places Supplementary Planning Document

## 21st Century Streets Workshop

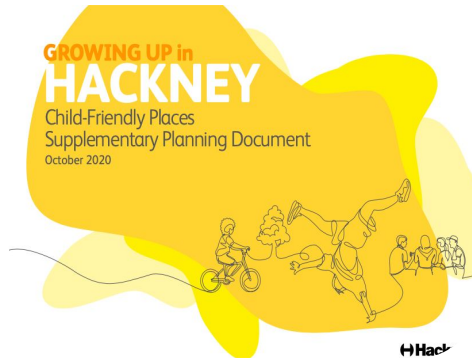
Strategic Planning I November 2020



# Introductions & Overview

“Children are a kind of indicator species. If we can build a successful city for children, we will have a successful city for all people.”

Enrique Peñalosa, Mayor of Bogotá, 1998–2001, 2016–2019



National Planning Policy Framework

London Plan

Local Plan (LP33)

Area Action Plans

Supplementary Planning Documents

Hackney A Place for Everyone

Hackney Local Plan 2033  
Strategic Planning  
Adopted July 2020



# Child-Friendly Principles

**1. Shaping My Borough:** to ensure children and young people in Hackney have the power to influence change in their Borough

**2. Doorstep play:** to provide the opportunity for play and social interactions immediately outside the front door

**3. Play on the way:** to provide opportunities for informal play, things to do and see around the neighbourhood beyond designated parks and playgrounds.

**4. People before Cars:** to ensure that children, young people and their carers can move through Hackney safely by walking, cycling or public transport.

**5. Contact with nature:** to build in opportunities for everyday access to and connections with nature

**6. Places for all:** to design socially inclusive and culturally sensitive places that are accessible and safe for all children and young people to enjoy together

**7. Making spaces children and young people want to be:** to ensure open spaces are designed to be vibrant, active and safe environments where children and young people want to be

**8. Health & Well-Being:** to ensure design of outdoor environments contribute towards healthier foodscapes, reduced exposure to pollution and improved physical and mental wellbeing.



# Child-Friendly Design Guidelines

A child in Hackney will grow up and experience their **neighborhood** along the scales of:

## 1. The Doorstep



The shared space that connects an individual's front door to wider public spaces and/ or streets

## 2. Streets



The network of routes that children, young people and their carers use to move between home and destinations within their neighbourhood

## 3. Destinations



The public spaces that children, young people and their carers make frequent journeys to use in Hackney



# 1. The Doorstep



## Guidelines include:

- **The Front Door** - all residential buildings should have playable space directly outside main entrance
- **Doorstep Play value** - pavement for doorstep play provision should be encouraged; range of activities; contact with nature



## 2. Streets



The network of routes that children, young people and their carers use to move between home and destinations within their neighbourhood

### Guidelines include:

- **Sustainable and Active Streets** - sustainable, social and healthy modes of transport - walking and cycling
- **Street Design Standards** - safer road crossings and appropriate pavements width to accommodate room to play
- **Lively Streets & Public Spaces** - active ground floor frontages for example through seating or shop frontage layouts
- **Accessible Routes and Journeys** - improving signage and connections between key buildings, public transport hubs, amenities and services that children and young people use
- **Playful Design** - play value as the key driver in play design, interactive physical elements, versatile street furniture or lighting features
- **Green Infrastructure** - making streets and neighbourhoods more liveable and green



School Streets



### 3. The Destination



The public spaces that children, young people and their carers make frequent journeys to use in Hackney

#### Guidelines include:

- **Accessible and Varied Parks, Playgrounds and Open Spaces** - ensuring key facilities are accessible for a wide range of ages and abilities needs and interests
- **Schools** - considering location of schools sites and opening school facilities to wider communities after hours
- **Multi-Use Game Areas (MUGAs)** - design, location, provision and maintenance
- **Designing a Public Realm for Everyone** - designing key destinations for a wide range of ages, abilities, needs and interests
- **Long Lasting Design and Maintenance** - ensuring that these spaces will last for a long time, and be well looked after

# Child Friendly Design Standard Criteria Questions

	Scale: Destinations	Traffic Light Score			Score
Child Friendly Design Standard Criteria	A child or young person would feel welcome and safe outside in this space without the supervision of an adult, during the day eg: There are people frequently going in and out of buildings or passing by this space and/or the entry and exit points are easy to find	0	1	2	
	There is enough lighting in this space when it becomes dark outside eg: The walking routes or sports areas are clearly lit up when it is dark	0	1	2	
	A child or young person would find it easy to navigate their way around this space eg: this space is well connected by walking and cycling or signposting is clear or design allows for movement by a range of different abilities to access this space	0	1	2	
	There are opportunities to play and have fun when visiting this space e.g: the space offers opportunities for different types of physical and mindful activities with mixed elements of risks or landforms at varying heights	0	1	2	
	There are opportunities to comfortably sit and gather with other people in this space eg: seating in this space is comfortable to use at all times of the year, particularly when it is very cold or very sunny	0	1	2	
	This space feels well looked after and clean eg: Litter is placed in bins and/or no graffiti on the street furniture	0	1	2	
	The windows of shops and front of buildings in this space are interesting and attractive eg: they are artistic, have front gardens, or window displays	0	1	2	
	This space provides movement opportunities and experiences for a range of different abilities e.g: you could access and easily move in this space if you were in a wheelchair or if you had a visual impairment	0	1	2	
	In this space one can enjoy contact with nature, both wild and well groomed eg: trees, hedges, flowers	0	1	2	
	This space supports access to healthier lifestyles e.g: healthy food options, opportunities for growing food, reduced air and noise pollution	0	1	2	
	Total				

## Marking Criteria: Traffic Light System

**Red:** 0 points

**Amber:** 1 point

**Green:** 2 points

The maximum number of points per scale is 20 and the total score correlates with the following site assessment:

**18-20 is considered Excellent.** This scheme meets all of the Child-Friendly Principles

**13-17 is considered Good.** This scheme currently meets most of the Child-Friendly Principles

**7-12 is considered Satisfactory** and more work is required. This place does not currently meet many of the Child-Friendly Principles

**0-6 is considered Poor.** This place does not meet enough of the Child-Friendly Principles



## Consultation is open: 27 October 2020 - 12 January 2021

### Have your say:

- To view the draft Child-Friendly Places Supplementary Planning Document and to have your say on the guidance, visit: <https://growingupinhackney.commonplace.is>
- The draft document and supporting information are also available at: [www.hackney.gov.uk/child-friendly-spd](http://www.hackney.gov.uk/child-friendly-spd)
- If you would like any more information or have any questions [gabrielle.abadi@hackney.gov.uk](mailto:gabrielle.abadi@hackney.gov.uk)





# Colvestone Crescent 21C Street

*prepared by*  
OOSW  
for London Borough of Hackney  
*REV0\_November 2020*

DRAFT

Contents

Our Work in Hackney

Current work in Dalston

Brief/ Project Context

- \_Project Brief
- \_Key outputs

Existing Context/ Site Analysis

- \_Site Analysis

High Level design concept/ strategy

- \_Initial concept sketch
- \_Areas of influence
- \_Access Strategy
- \_Refuse & emergency access
- \_Character areas
- \_Sustainability Infrastructure

Character Areas

- \_Character Area 01- Gateway Garden
- \_Character Area 02- Congregation Spaces
- \_Character Area 03- Ecology Garden
- \_Character Area 04-Resident grow spaces
- \_Character Area 05-Play field

Questions

Next Steps





**Hackney Central Narrow Way**  
*with Loving Your Garden & East London Furniture*  
(2013-14)

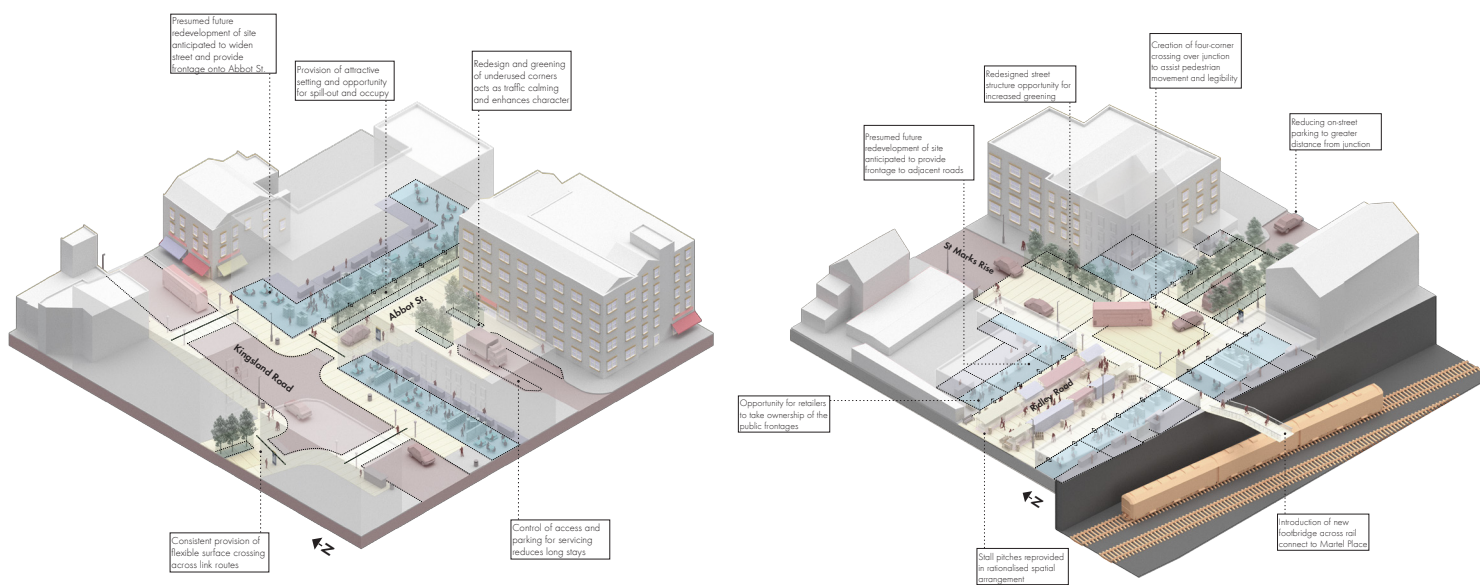
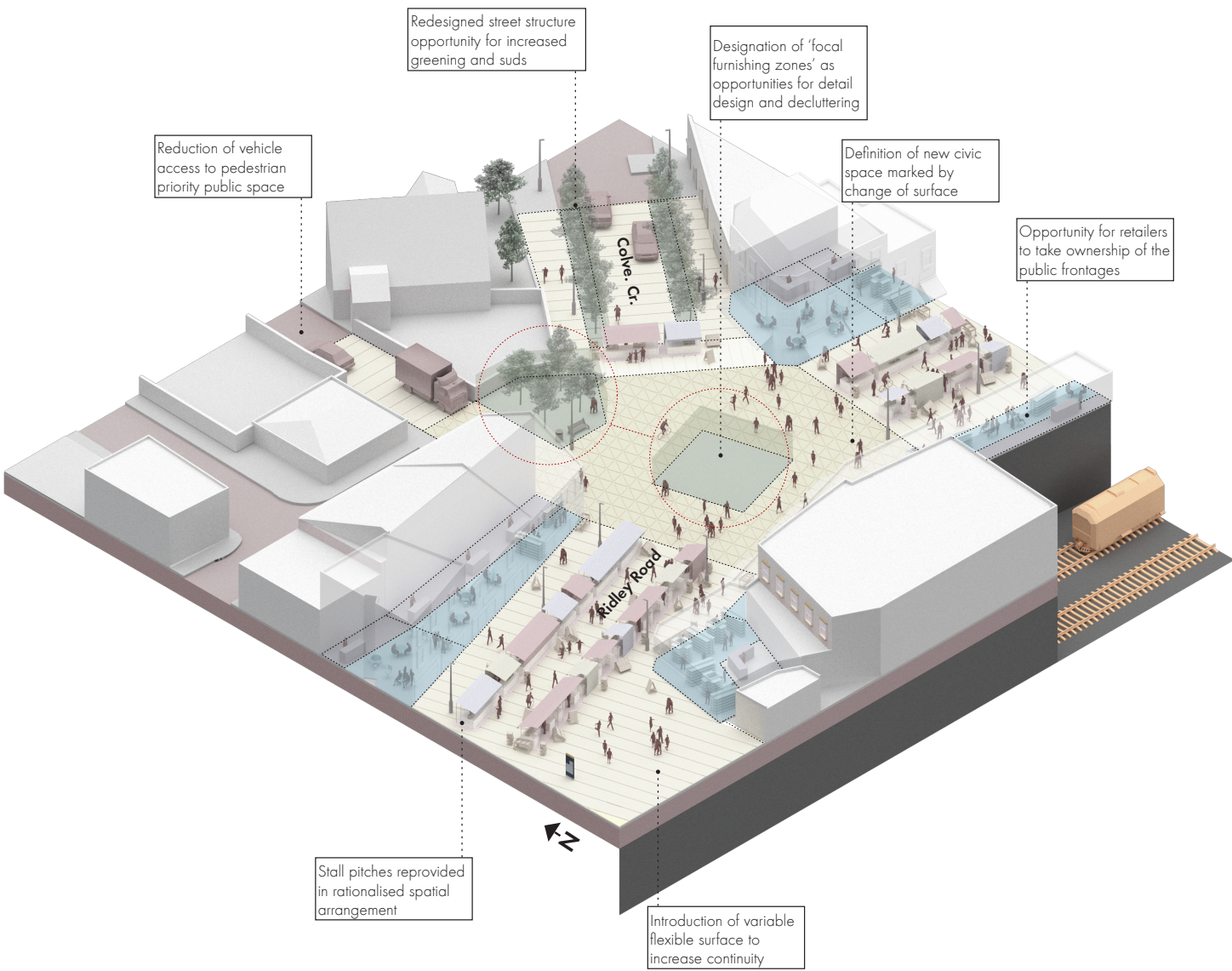
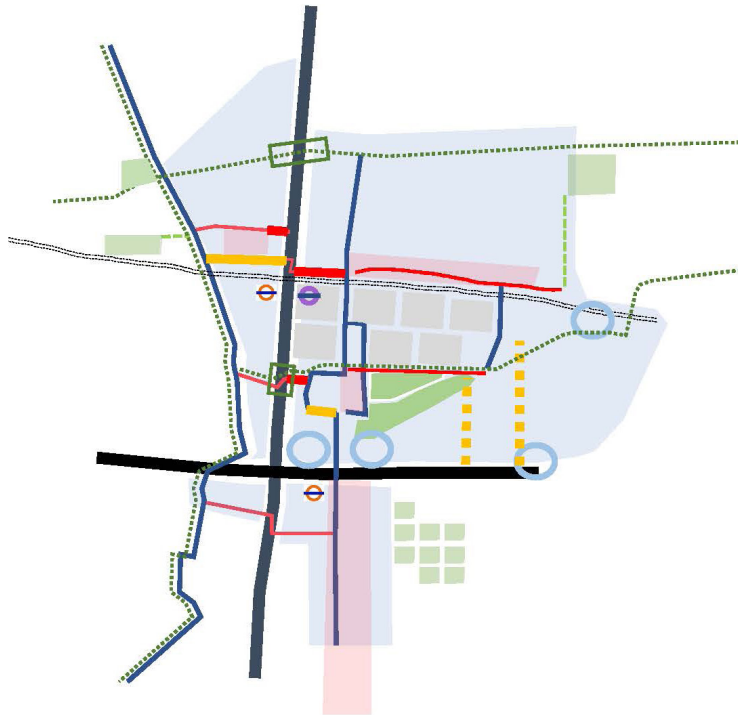
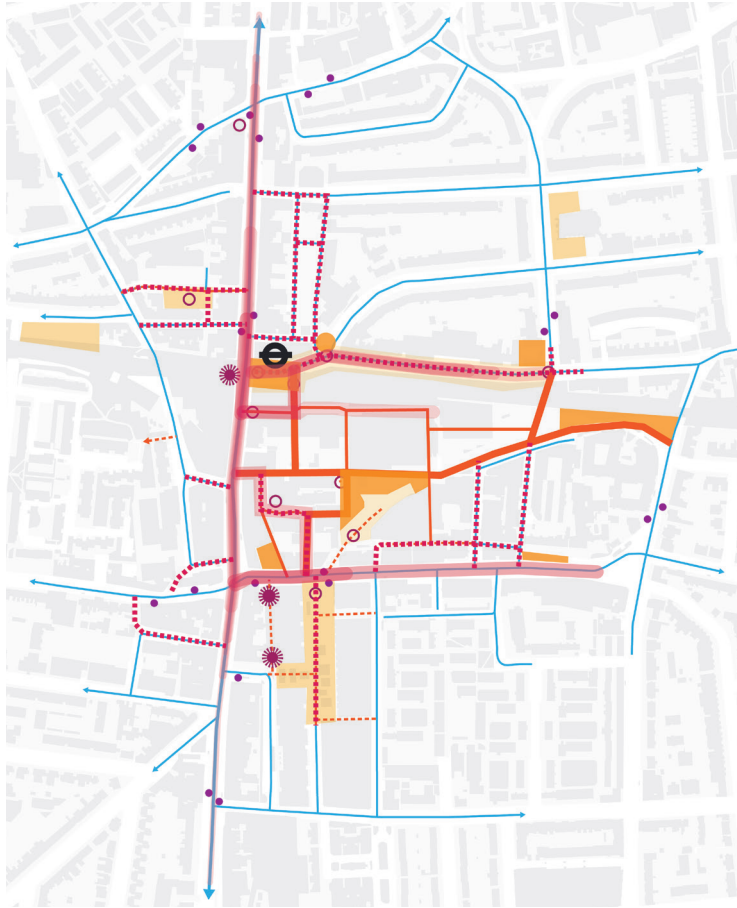


**Hackney Central Masterplan (Public Realm)**  
*with Hawkins/Brown*  
(2015-16)



**Dalston Town Centre Permeability Study**  
*with Allies & Morrison & UrbanFlow*  
(2018)









Key Plan

Existing street light column

Existing Services

Existing CCTV column

Existing bollards

Existing signage column

Pitch Locations

Proposed Trees

Bespoke circular tree pit bench. Refer to dwg:258\_RR\_140\_02-03

Bespoke circular bench with container tree. Refer to dwg:258\_RR\_140\_02-03

Proposed semi circular bespoke bench planters.

5

| 266\_Colvestone Crescent\_Outline Masterplan

## Site Location\_Colvestone Crescent

Within the context of Dalston Colvestone Crescent sits at a key junction that connects Birbeck Mews, Colvestone Crescent and Ridley Road Street Market.



**School streets present an opportunity for...**

**\_reduced congestion**

**\_reclaiming space in front of a school for play, active travel and other activities**

**\_reducing pollution**

**\_encouraging alternative modes of transport and active travel**

**\_independent mobility**

**However, Colvestone Crescent 21c school street presents an opportunity for much more!**



Create an accessible play journey throughout



Create a diverse and varied landscape for exploration and play



Create a safe pedestrian prioritised space



Create spaces for dwell and social interaction


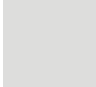




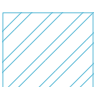



Create places for resident participation and custodianship



Provide diverse and varied planting to increase biodiversity and offer an educational resource

**Colvestone Crescent**

-  Existing Residential Properties
-  Existing Pavement
-  Existing Trees
-  Colvestone Crescent Primary School
-  Existing Parklet
-  Front Gardens
-  Primary School Playground/ Carpark
-  Project Influence Zone

**Agreed Conditions**

\_Redline Site Boundary

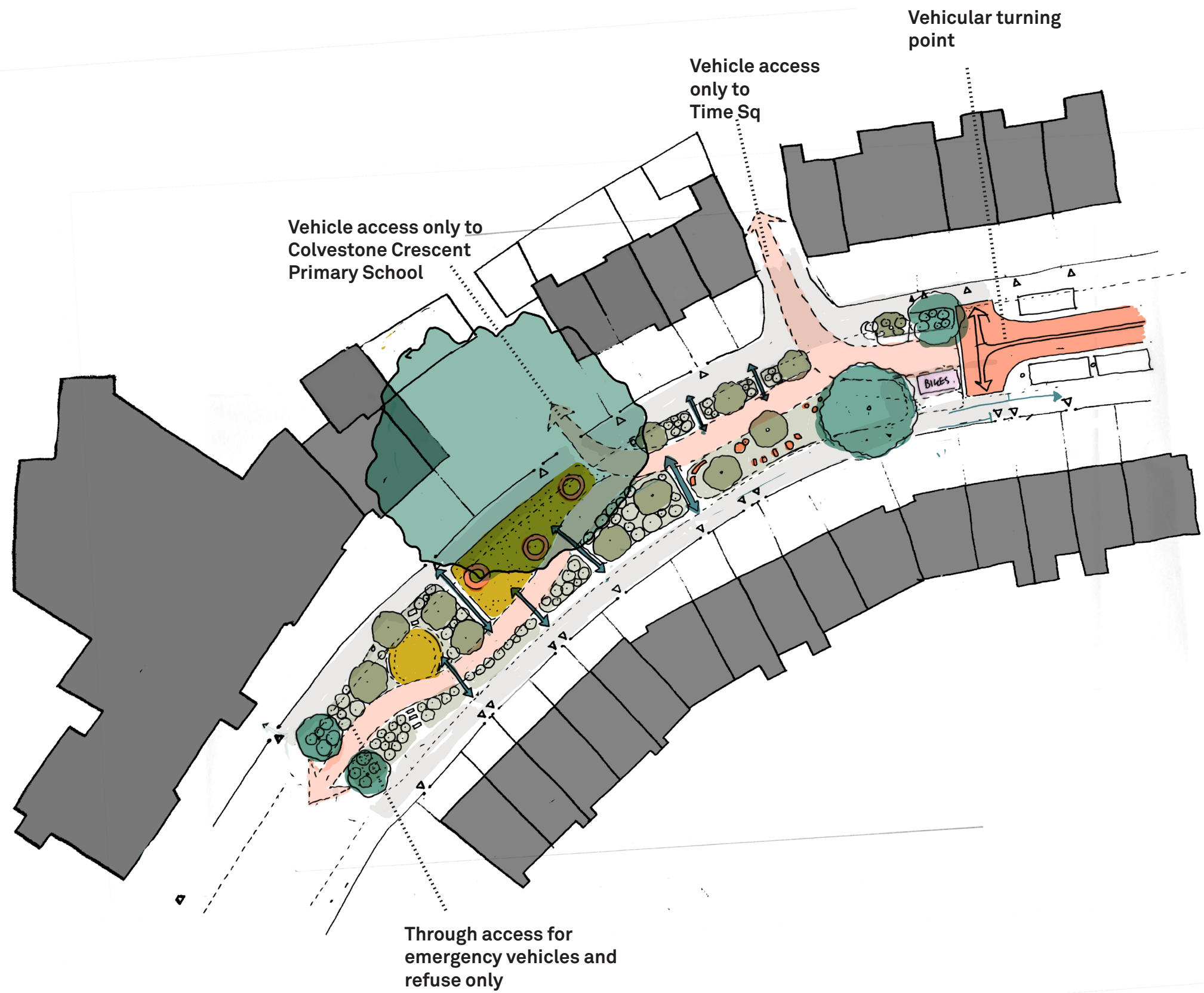
\_Removal of 23 parking bays in front of residential properties

**Other proposed conditions**

- \_Removal of all fencing and bollards
- \_Retain Existing trees
- \_4m access path throughout
- \_Retain existing pavement
- \_Retain existing parklet



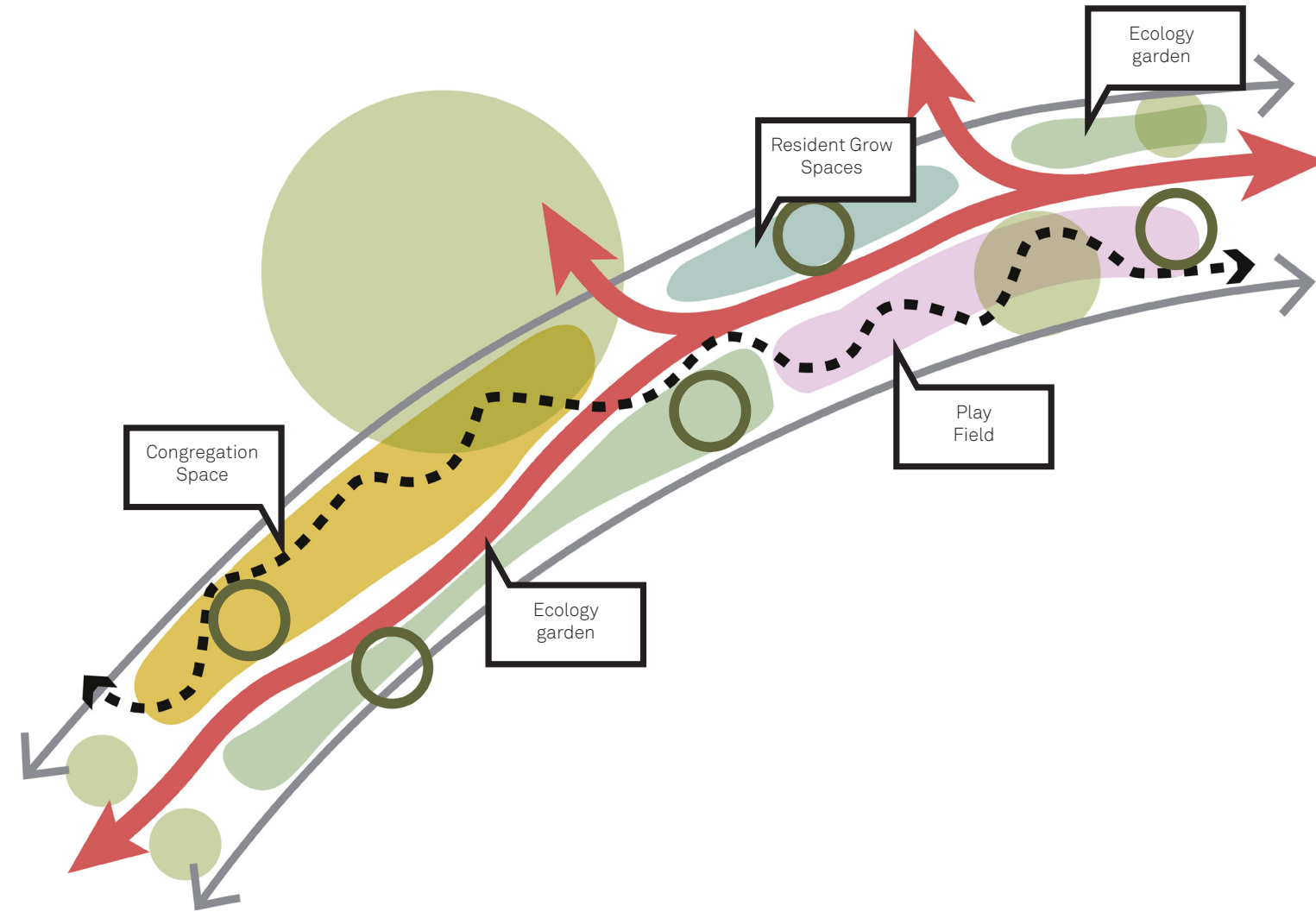




Conceptual principals

- All vehicles access
- Pedestrian priority path. Minimal vehicular access for school, fire, refuse and residents
- Key pedestrian routes
- Existing trees
- Trees/ greenery
- "greened" areas
- Congregation/ social spaces
- Sustainable transport ie bike hangers & electrical charging points





Within the masterplan we have included areas that offer opportunities for various types of participation in both the design, delivery and ownership of these spaces.

The site's location next to Colvestone Crescent primary school provides opportunities for involvement with the school and we have factored this into the design through the inclusion of spaces for play, congregation and ecological learning.

The new street will also provide a new communal space for residents of Colvestone Crescent and within the masterplan there is potential for resident groups to take ownership over spaces, such as on street planting beds.

Within Hackney there are various groups working on extremely successful community gardens and community spaces. For example, the Dalston Curve Garden and Hackney Community Gardeners. The project aims to engage local expertise to aid the development of the 21c street and ensure it is a high quality, well loved and exciting new space for Dalston.

## School groups



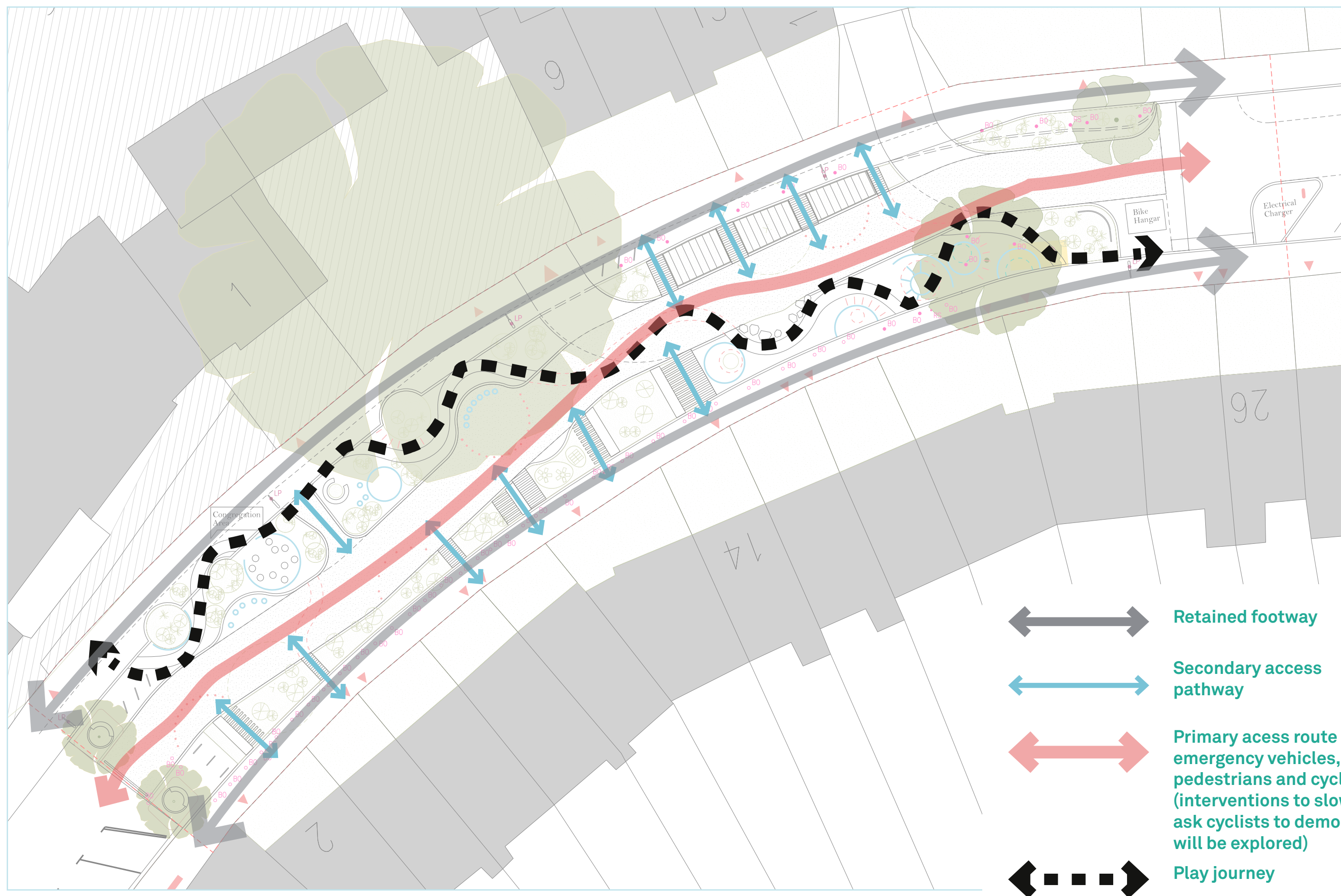
## Community Gardeners







## Local Residents







-  Retained footway
-  Secondary access pathway
-  Primary access route for emergency vehicles, pedestrians and cyclists (interventions to slow or ask cyclists to demount will be explored)
-  Play journey

To ensure access to residential properties, Covlestone Crescent primary school and refuse access we will need to retain a 4m access pathway through the 21c street. To ensure this is a pedestrian priority route we will be including key access bollards in the positions shown to minimise through traffic to emergency vehicles and refuse vehicles only.

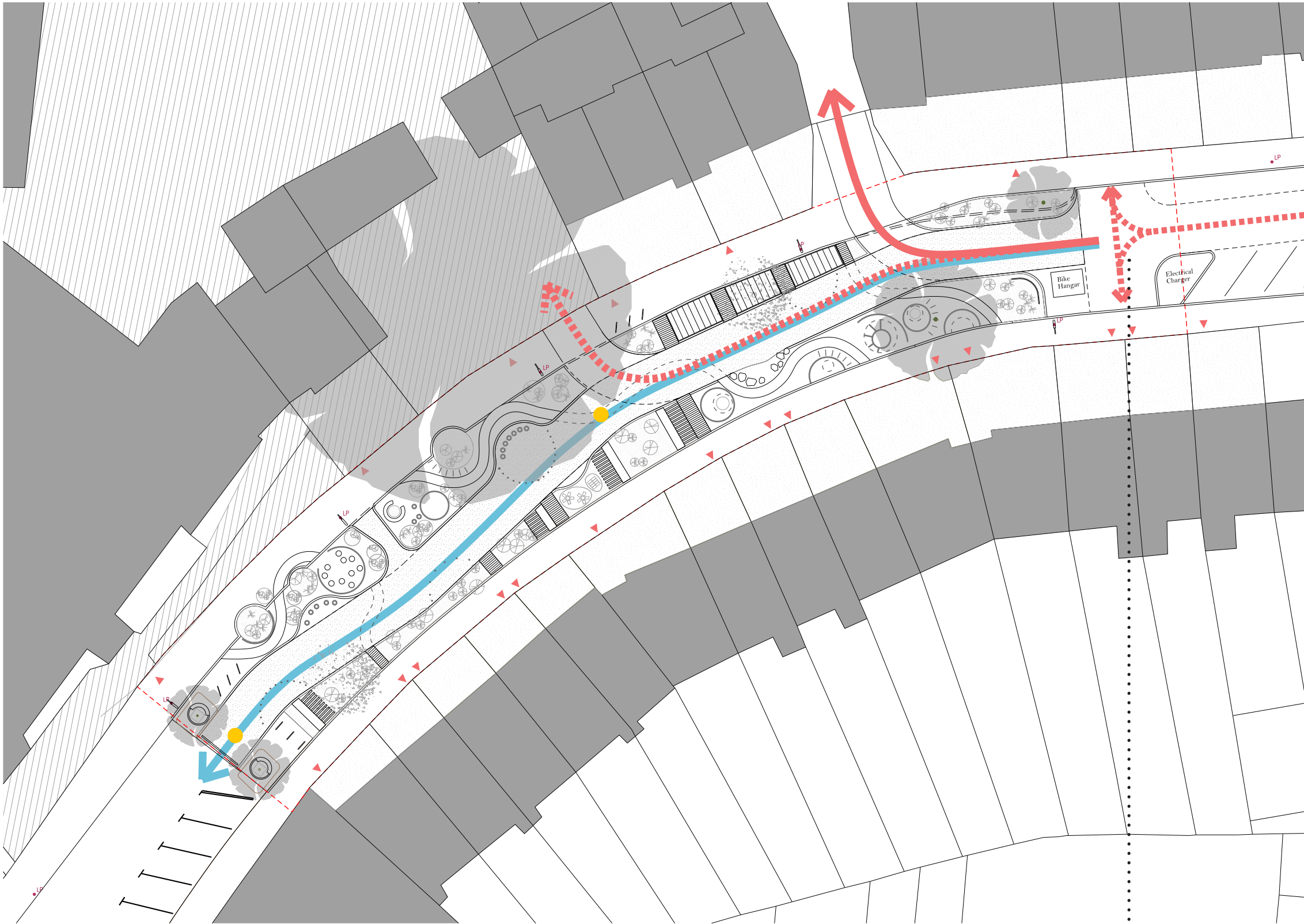
- Fire/ Refuse key access bollards
- ← Vehicle access remains clear to school car park,
- ← Route kept clear for emergency vehicles and refuse access

## Guidance taken from Refuse & Recycling Storage Guidance LBH:

7.2 Convenience

Residents should not have to carry waste more than 25 metres from their home. Recycling and waste facilities should be next to each other. Waste collection crews and caretakers should not have to:

- \_carry waste sacks more than 10 metres
- \_carry bins or move wheeled bins (up to 360 litres) more than 15 metres
- \_move a Euro bin or other large wheeled bin more than 10 metres.+

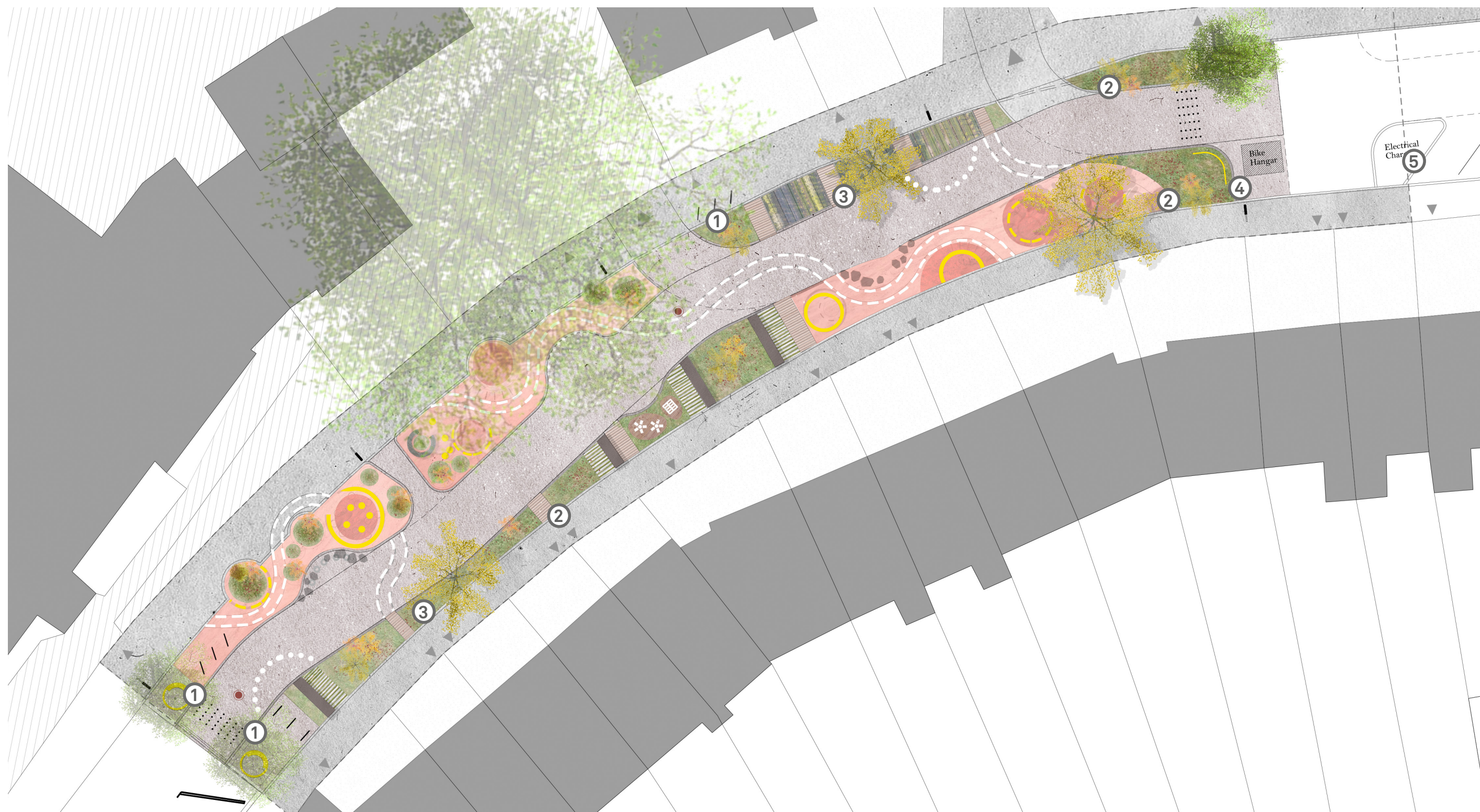


Proposed turning point to be reviewed by Hackney's Traffic Engineers.



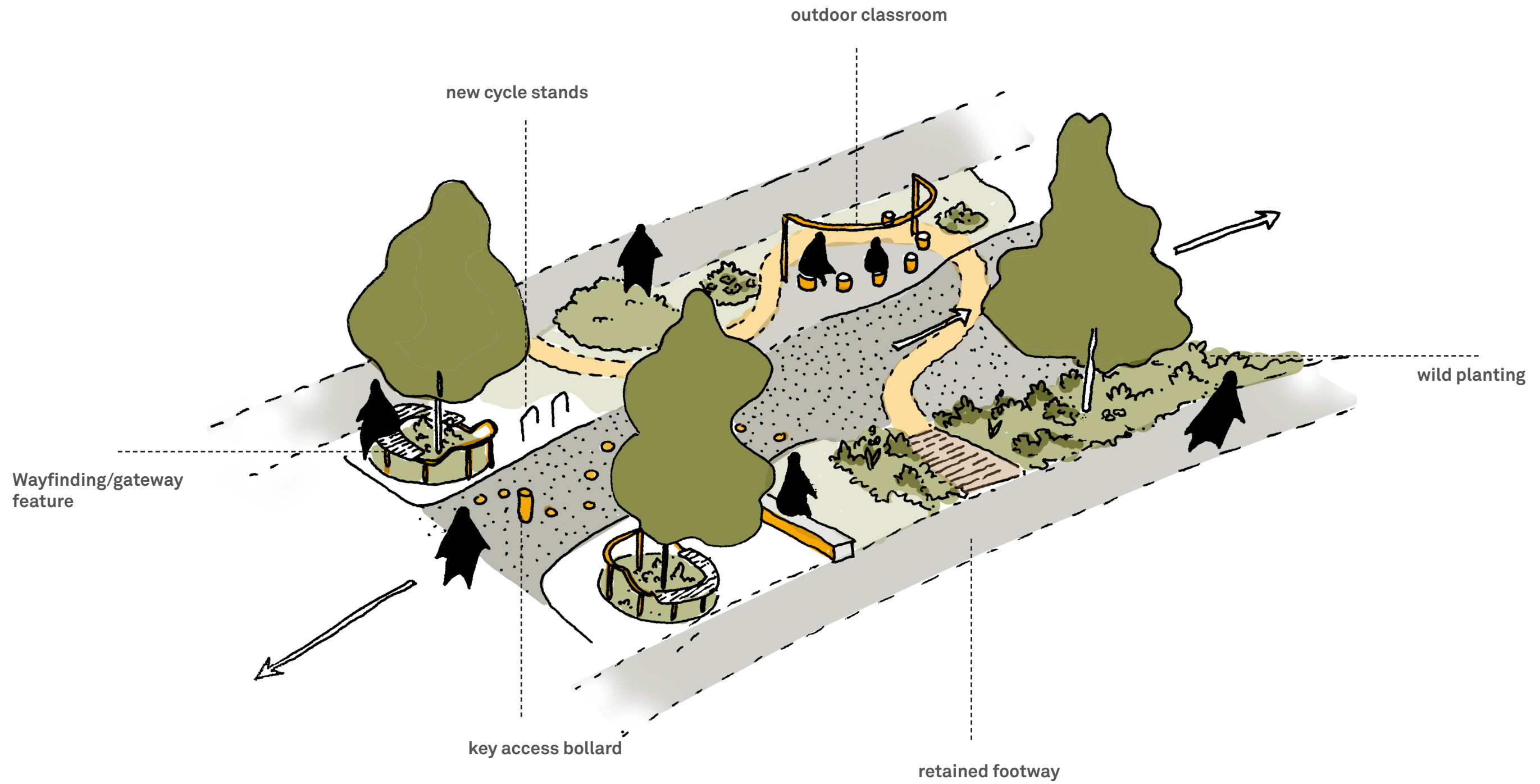




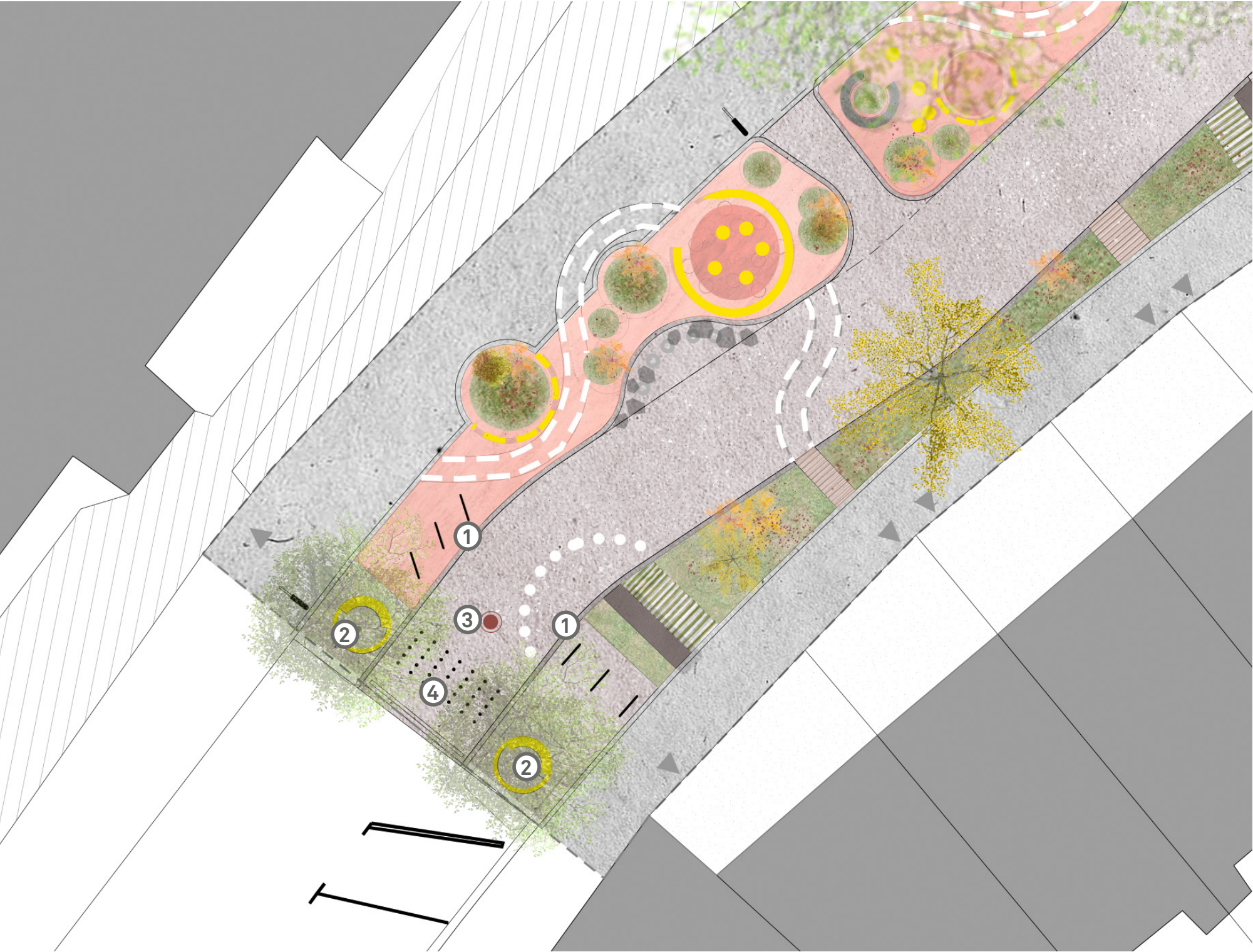


- ① New sheffield stands
- ② SUDs/ ecology planting
- ③ Proposed trees
- ④ Bike hanger
- ⑤ Electrical car charging points



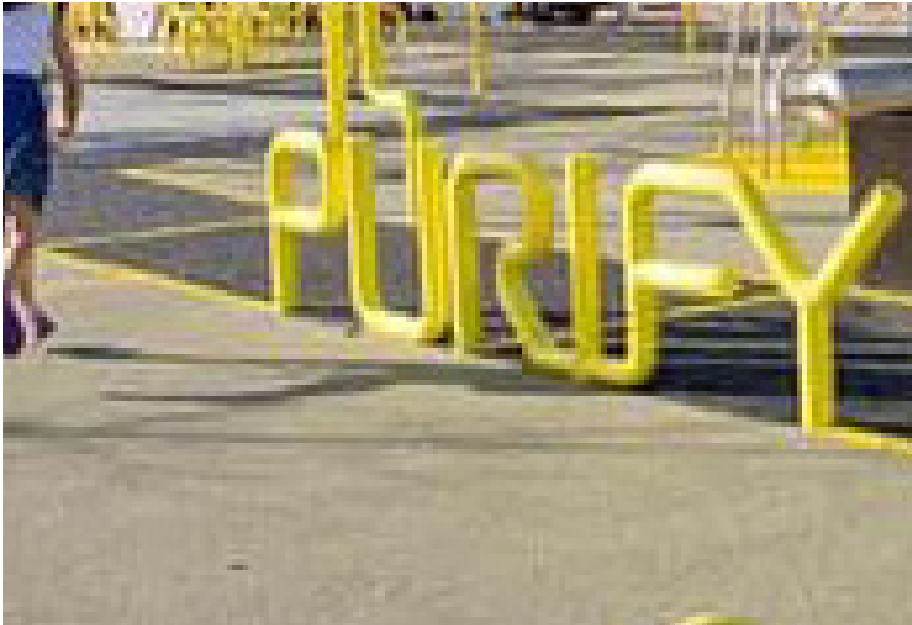






- ① Sheffield Stands
- ② Existing trees/ new benches / gateway feature
- ③ Key access bollard
- ④ Traffic calming measure to slow cyclists

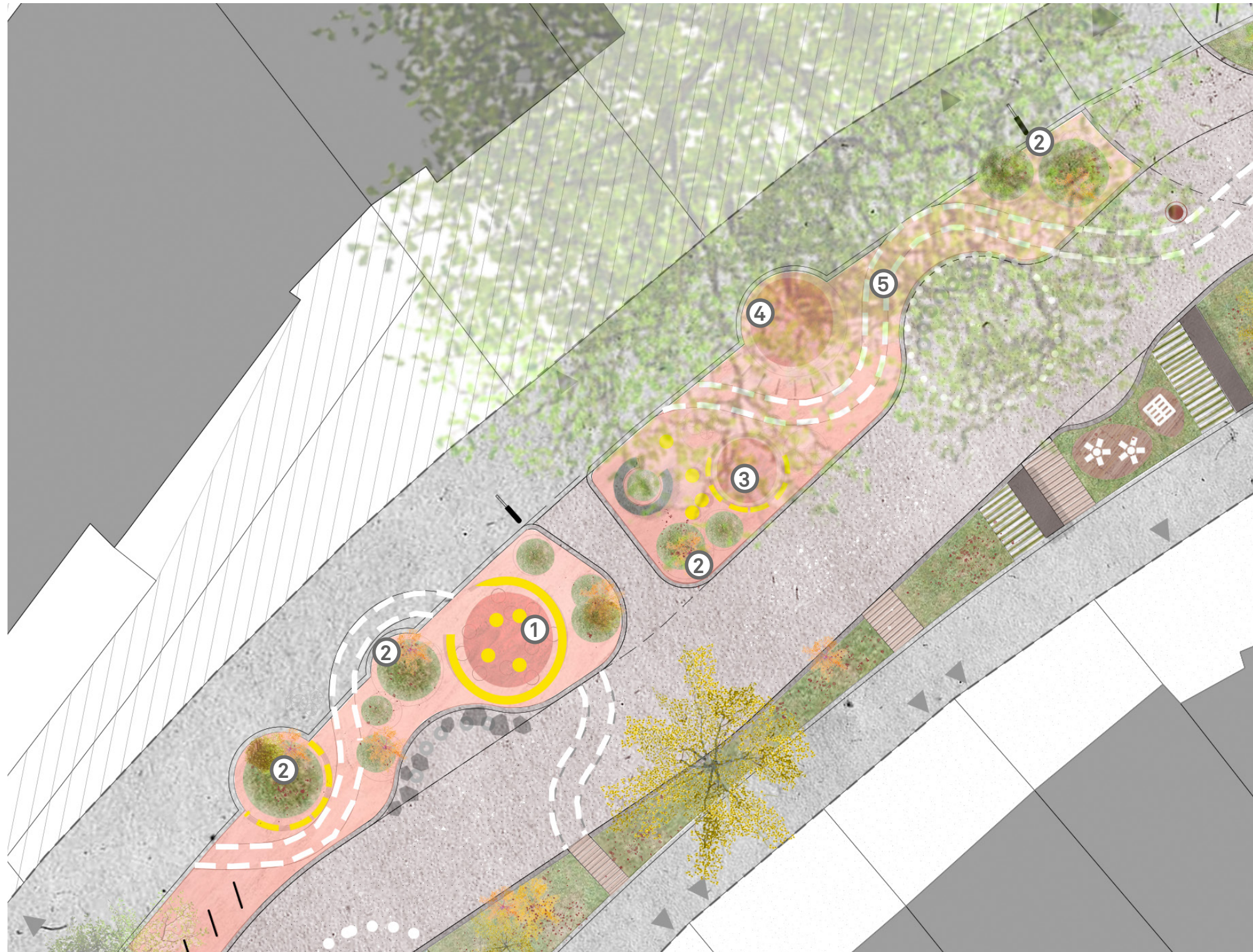
Precedent images for garden gateway





# DRAFT

## Character Area 02\_Congregation Spaces

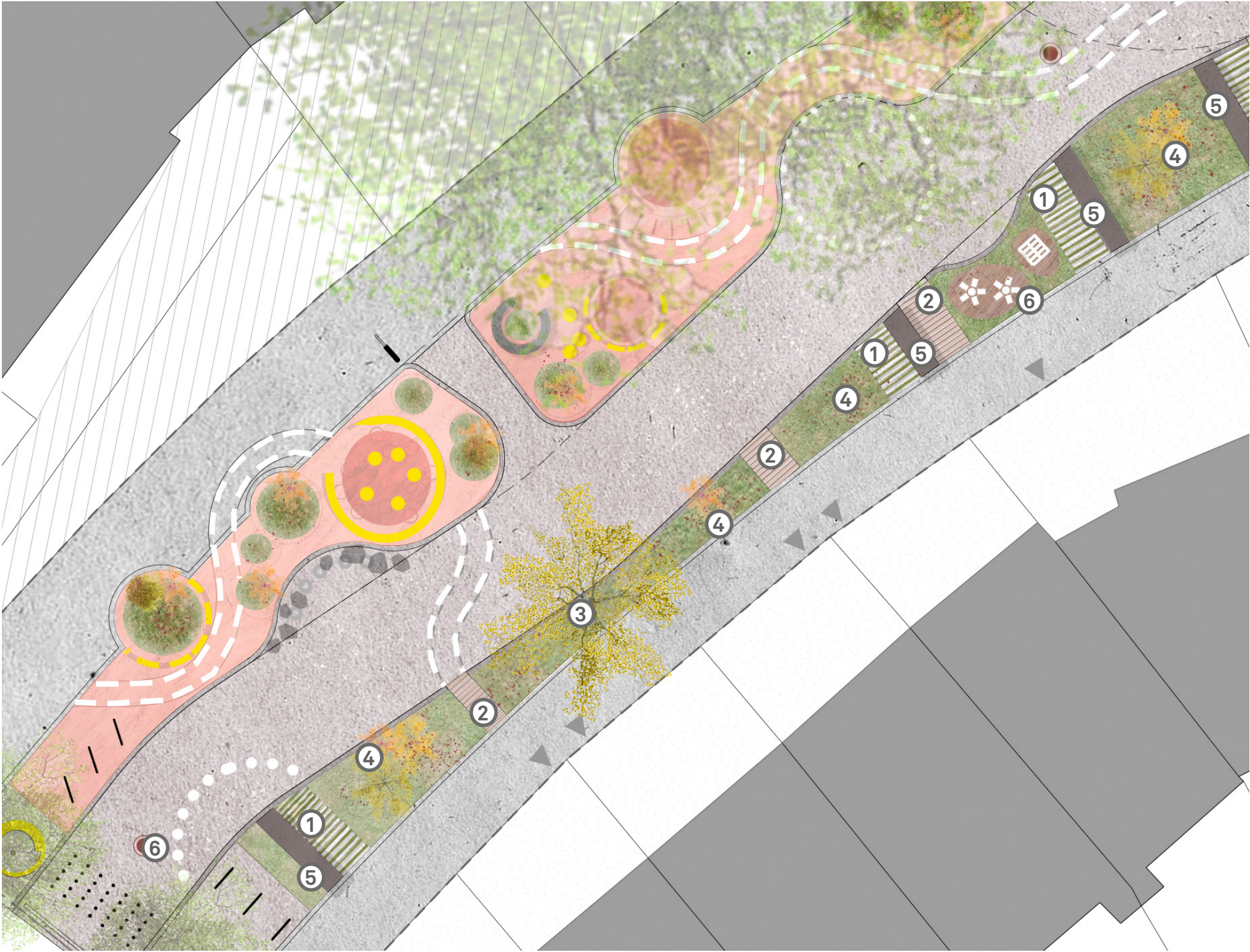


- ① Outdoor classroom
- ② Landscape mounds
- ③ Seating
- ④ Soft surfacing
- ⑤ Painted markings

Precedent images for congregation spaces







- ①

Permeable paving
- ②

Garden pathways
- ③

Proposed trees
- ④

Wildflower meadow
- ⑤

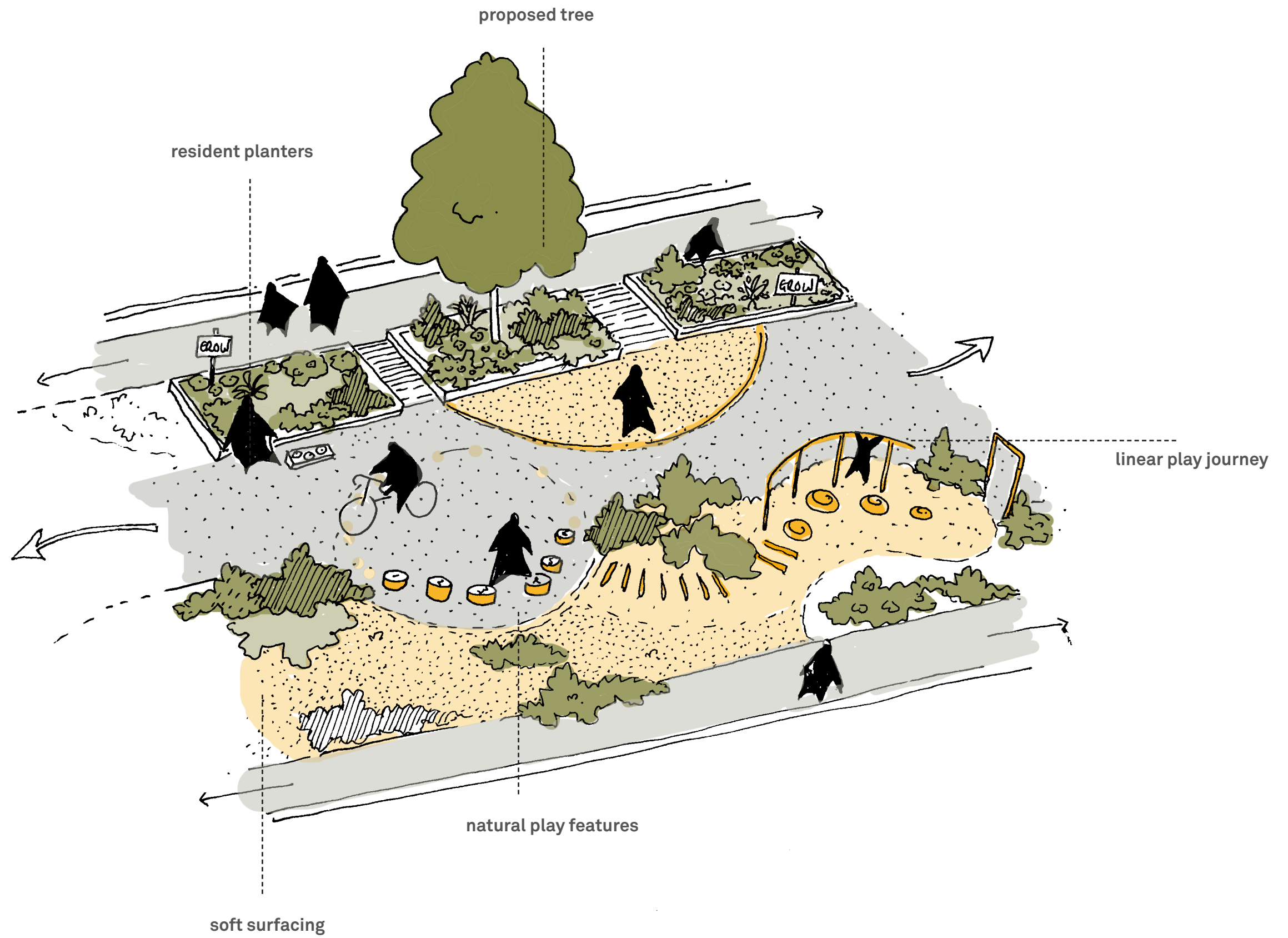
Garden seating
- ⑥

Biodiversity features

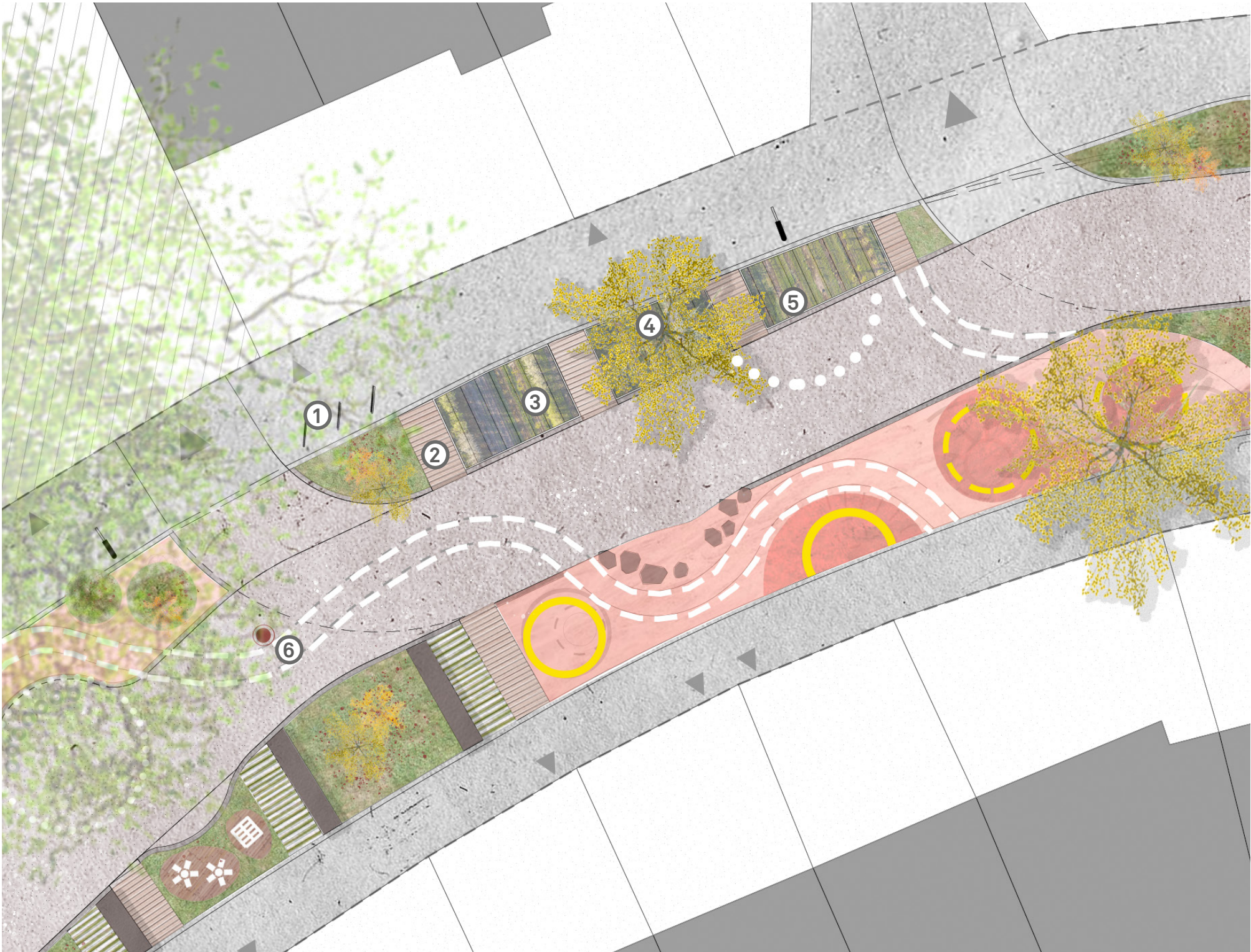
Precedent images for ecology garden











- ① New sheffield stands

② Garden pathways

③ Resident planterbeds
- ④ Proposed tree

⑤ Resident planterbeds

⑥ Key access bollard

Precedent images for on street planting

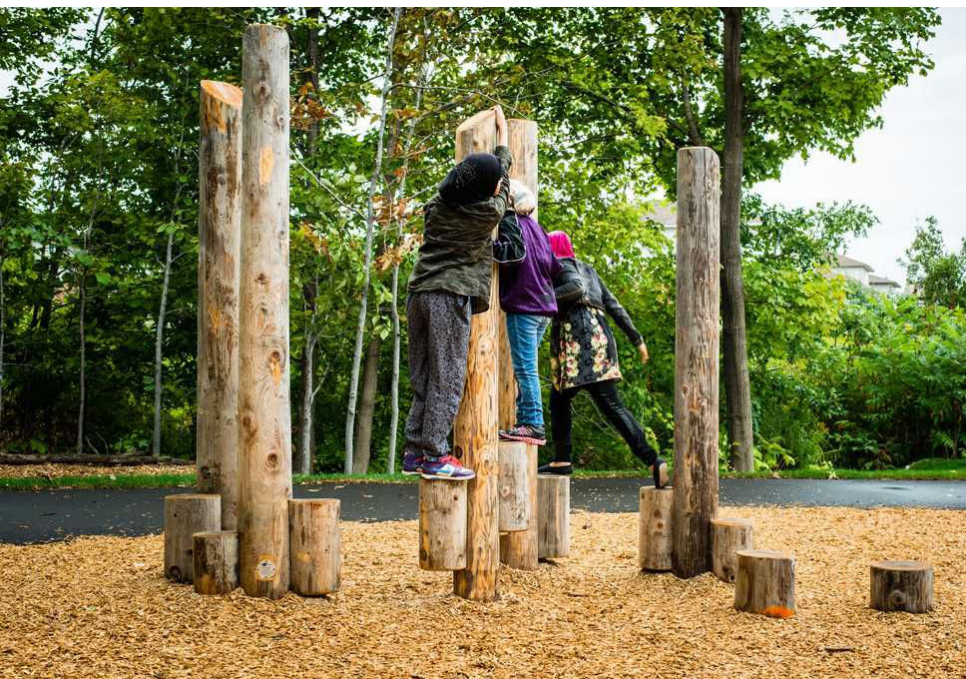






- ① Simple play equipment
- ② Natural play features
- ③ Soft surfacing
- ④ Existing tree
- ⑤ Wayfinding/gateway feature
- ⑥ Traffic slowing measure

Precedent images for playfield





How do you perceive you will use this space as residents, parents, children/pupils?

What type/ nature of space do you want to see within the 21c street? ie. garden spaces, planters, play, community notice board etc

What key issues do you see arising from concept designs or character areas?

How do you feel you could be involved in the long term delivery and maintenance of the project?



**Outline Programme:**

**\_Review feedback on initial outline masterplan. (November-December)**

**\_Produce Stage 03 design for further engagement with community, key stakeholders and internal council departments. (December- January)**

**\_Run focus workshop with active ‘working group’ (Early February)**

**\_Develop design in collaboration with working group. (February)**

**\_Deliver detailed Stage 04a design (February-March).**

**For further contact or queries on 21c streets please email:**

**[garry.morris@hackney.gov.uk](mailto:garry.morris@hackney.gov.uk)**

**For further contact or queries on child friendly borough  
please email:**

**[gabrielle.abadi@hackney.gov.uk](mailto:gabrielle.abadi@hackney.gov.uk)**



217 Mare Street  
London, E8 3QE

T: 020 7099 1922 / E: [hello@studioweave.com](mailto:hello@studioweave.com)

Studio Weave is a limited company;  
Company no. 6352249, VAT no. 973 4536 91