

Estate Recycling Programme Burma Court Estate



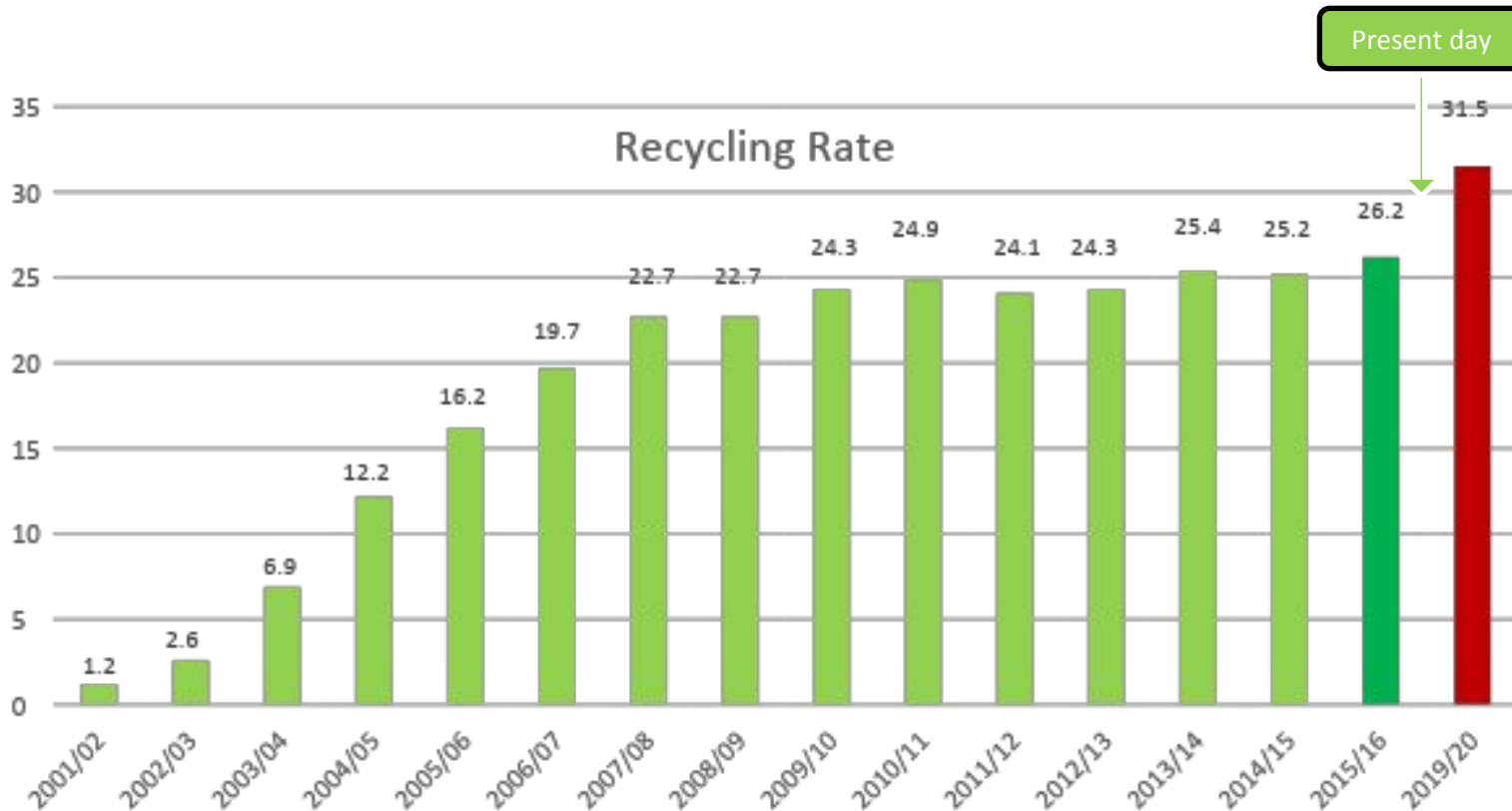
Introduction to the ERP Team

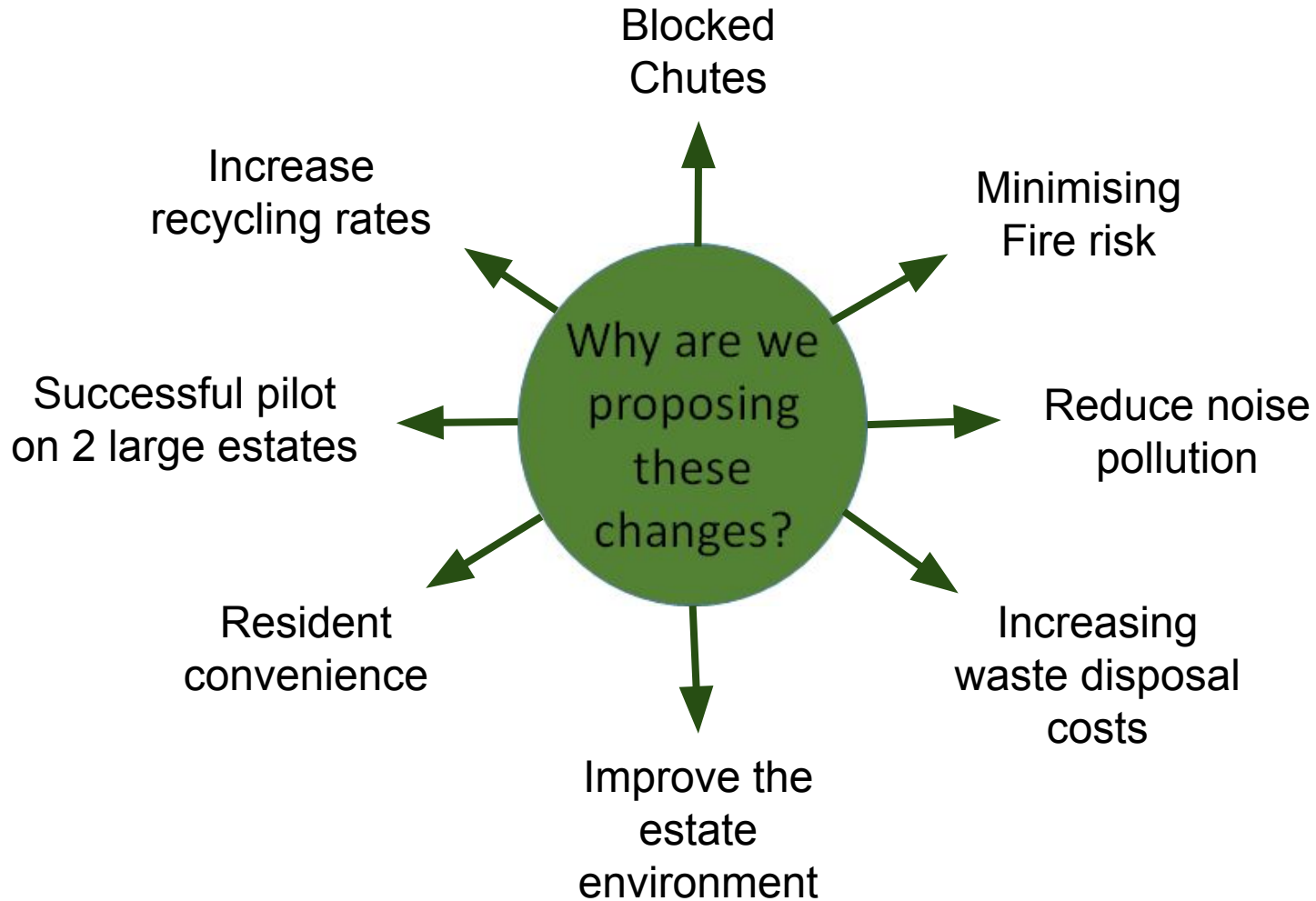
- Christos Tympanaris – Estate Recycling Programme Manager
- Daljit Assi – Estate Recycling Project Manager
- Andrew Dove – Estate Recycling Project Officer
- Kirsty Ainsworth – Estate Recycling Project Support Assistant

Recycling Rate Targets

2020 targets:

- Recycling rate 50% NLWA or 31.5% for Hackney;
- Recycling performance in Hackney Housing estates is very low: 8%-10%





What have we done so far?



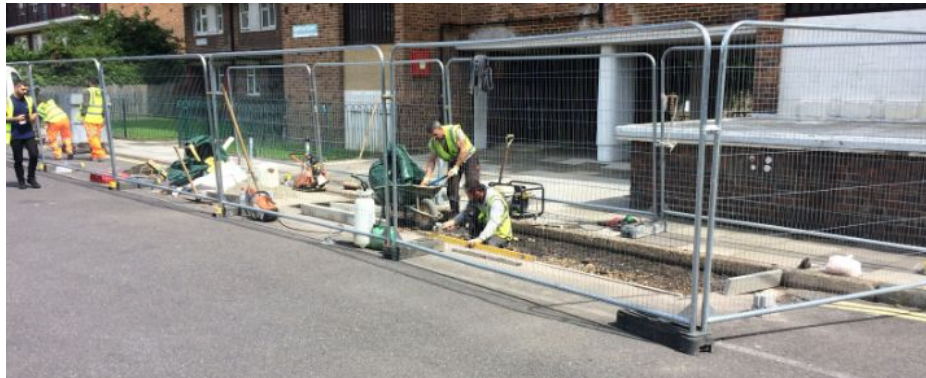
Before & After



Before & After



Before & After



Hopper before and...



... after removal



Bin chamber before...



...and after



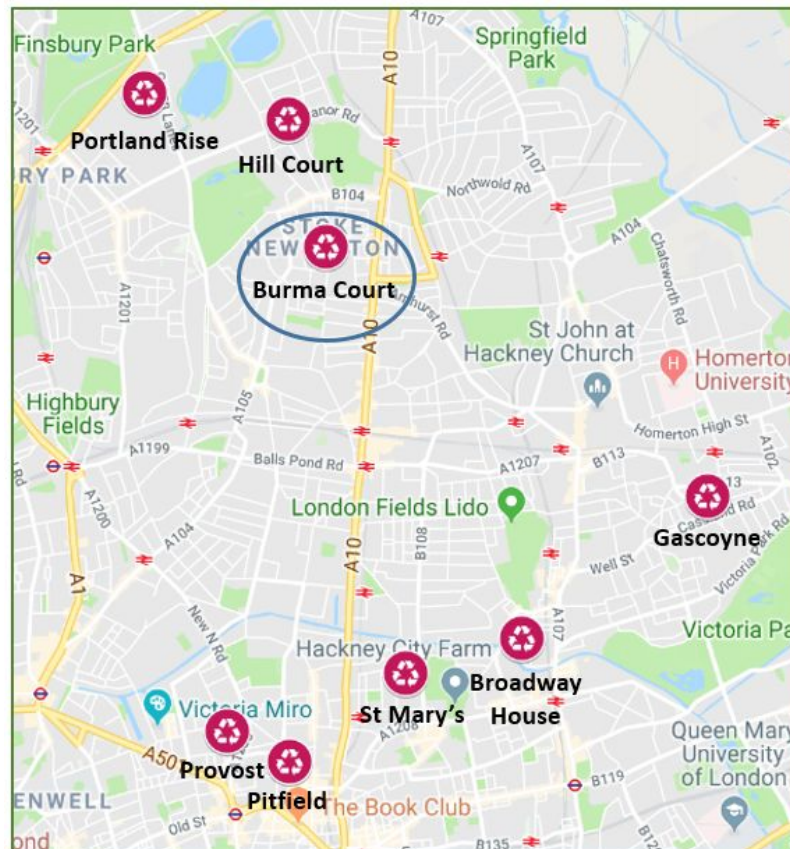
Burma Court Estate Information

- Cost of unblocking chutes at Burma Court from 2005 to 2017 = £22,535.
- Blocked chutes at Burma Court have been reported 117 times from June 2017 to November 2018.
- We will add a total of 19 recycling bins to Burma Court making it easier for you to recycle your waste



Proposals

We are expanding the project to deliver these infrastructure changes to 8 more estates over the next 2 years.





Proposed Recycling Sites for Burma Court Estate



Scale: 1:1150 at A4



Ref:

01 November 2018

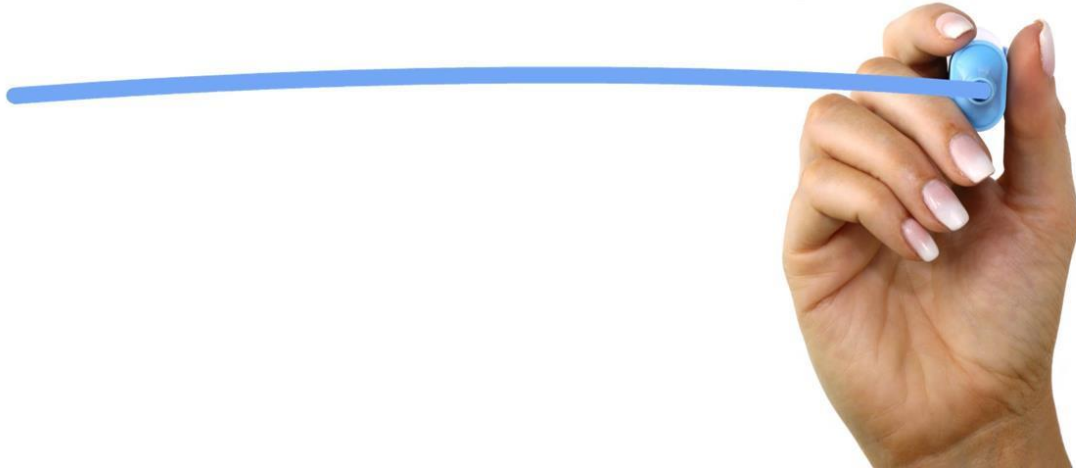
Produced by: Waste Strategy

email:

please specify copyright statement



QUESTIONS



Proposed Locations



**Lashio House
Option 1**



**Mandalay House
Option 1**



**Orde House
Option 1**



**Chindit House
Option 1**



**Karen House
Option 1**



**Wingate House
Option 1**

Proposed Locations



**Arakan House
Option 1**



**Arakan House
Option 2**



**Ledo House
Option 1**



**Salween House
Option 1**