

# Estate Recycling Programme Pitfield Estate



# Introduction to the ERP Team

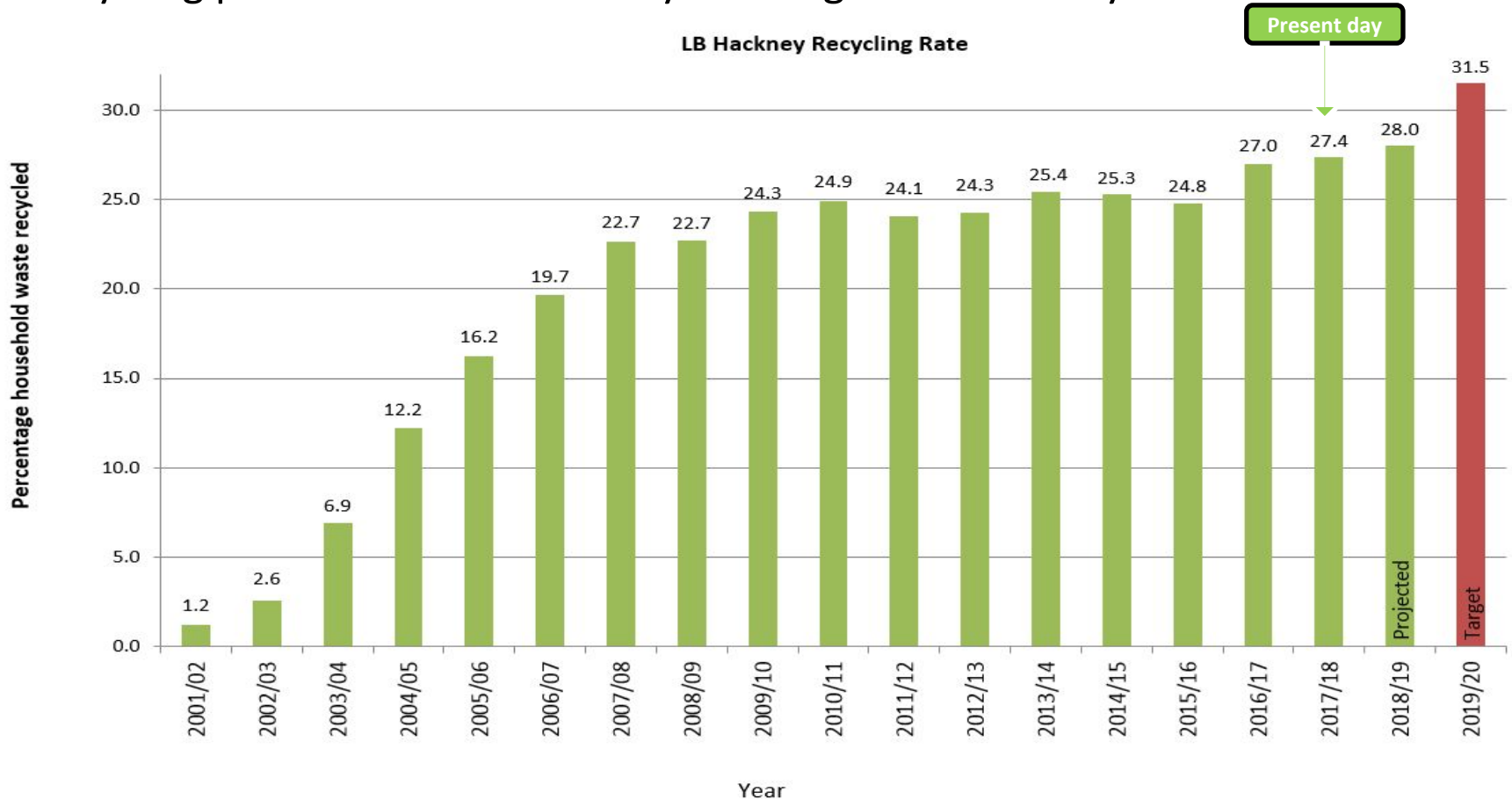
- Christos Tympanaris – Estate Recycling Programme Manager
- Daljit Assi – Estate Recycling Project Manager
- Andrew Dove – Estate Recycling Project Officer
- Kirsty Ainsworth – Estate Recycling Project Support Assistant

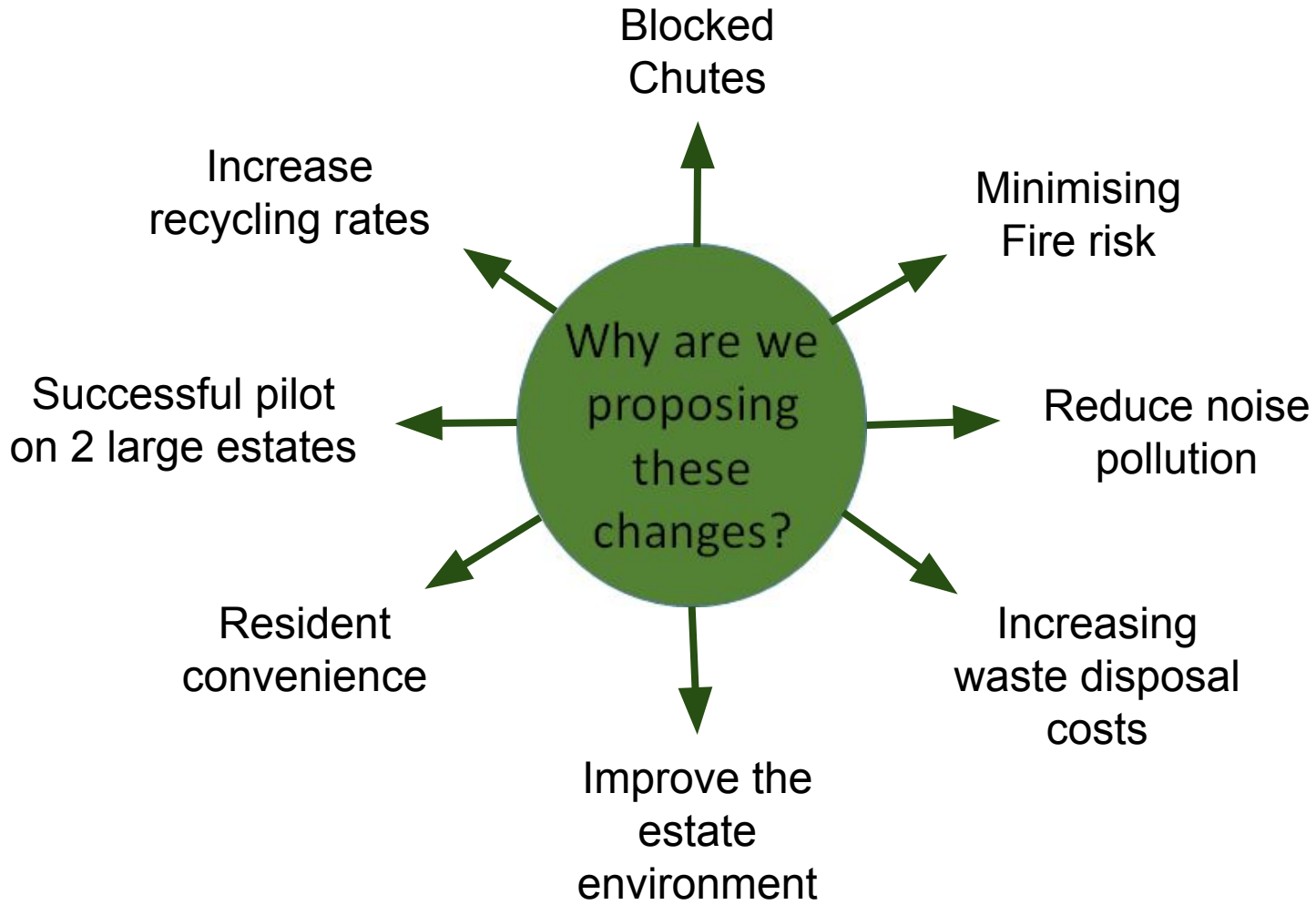
# Recycling Rate Targets

2020 targets:

Recycling rate 50% NLWA or 31.5% for Hackney;

Recycling performance in Hackney Housing estates is very low: 8%-10%







# What have we done so far?





# Before & After

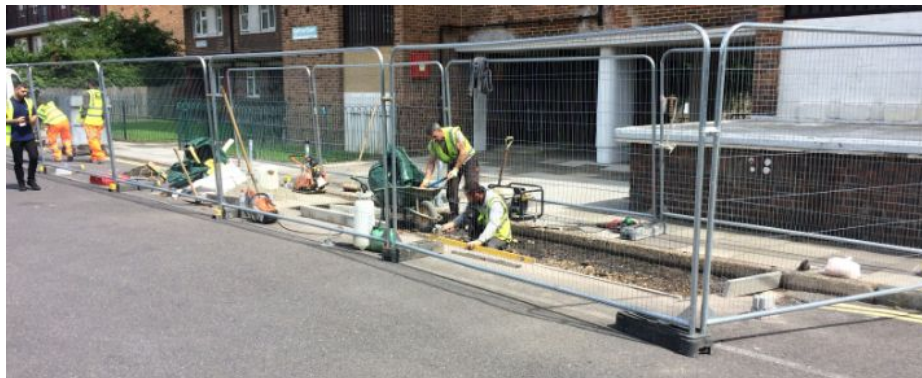


# Before & After





# Before & After





# Hopper before and...



... after removal



# Bin chamber before...



# ...and after





# Pitfield Estate Information

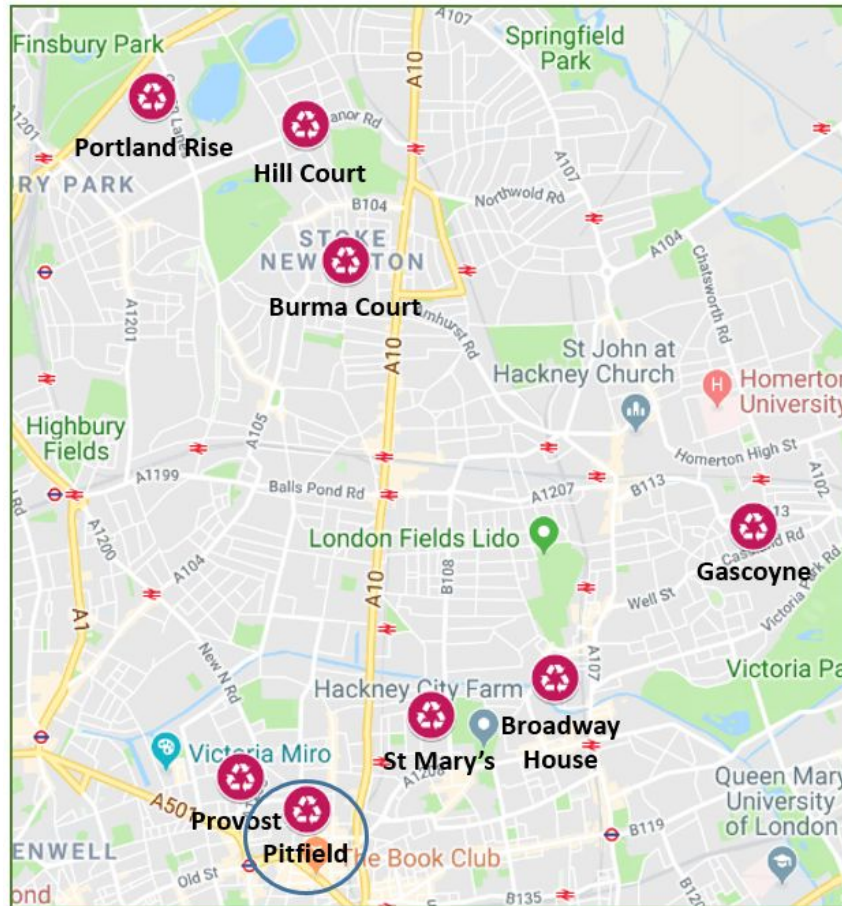
- The chutes at Pitfield Estate have been blocked 429 times from March 2017 to present.

Block Name	Max distance to recycling bins
1-36 Royal Oak Court	19m
37-52 Royal Oak Court	33m
73-108 Royal Oak Court	17m
109-124 Royal Oak Court	20m
1-60 Burt House	20m
1-59 Fairchild House	39m

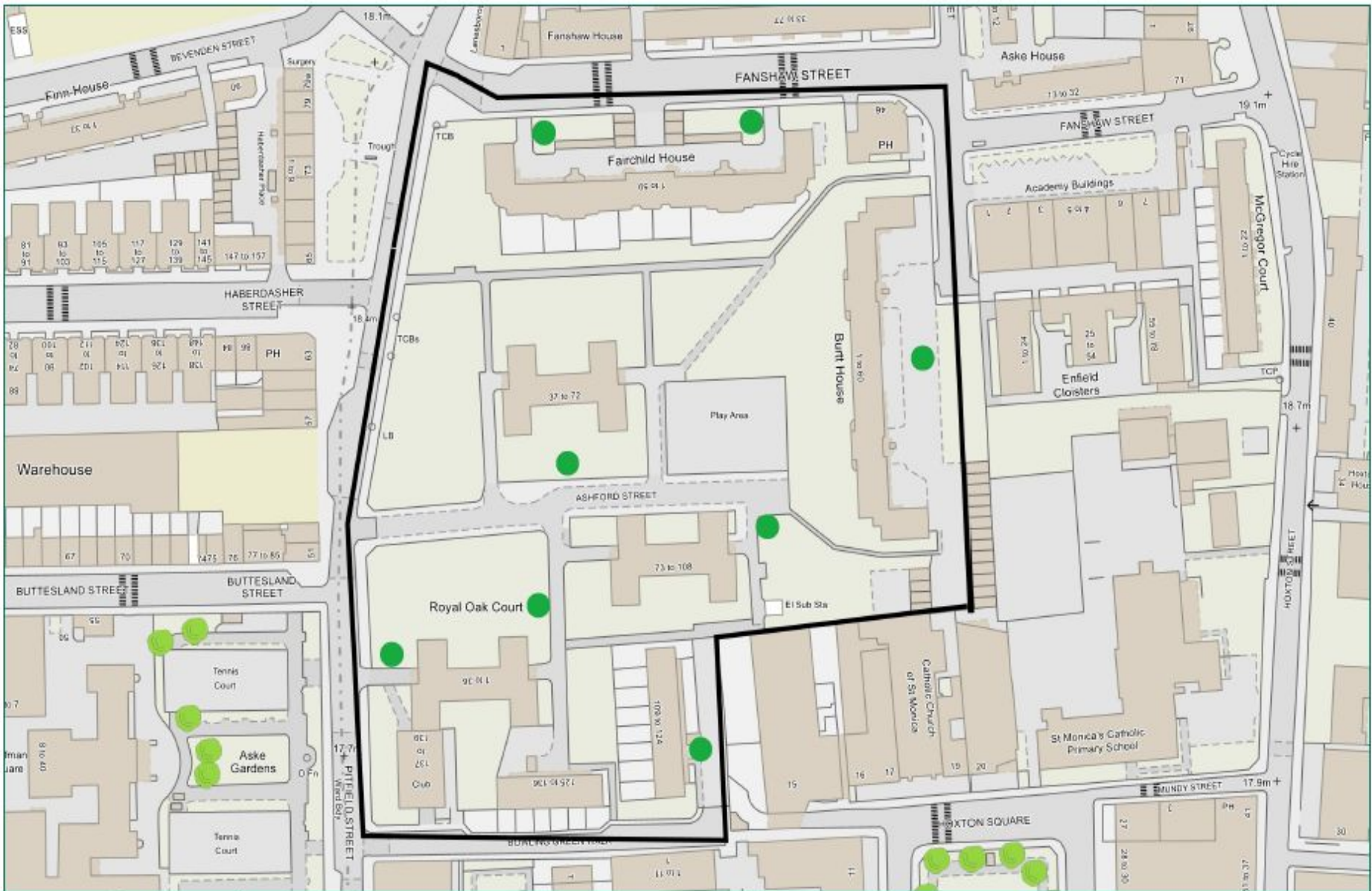


# Proposals

We are expanding the project to deliver these infrastructure changes to 8 more estates over the next 2 years.







NORTH

Scale: 1:1250 at A4



Ref.

26 November 2018

Produced by: Waste Strategy

email:

### Proposed Recycling Sites on Pitfield Estate

© 2018 Bartholomew Ltd. Reproduced by permission, Harper Collins Publishers 2018



QUESTIONS





# Proposed Locations



**1-18 Royal Oak Court**  
Option 1



**19-36 and 73-90 Royal Oak Court**  
Option 1



**109-124 Royal Oak Court**  
Option 1



**125-136 Royal Oak Court**  
Option 1

# Proposed Locations



**55-72 Royal Oak Court**  
Option 1



**37-54 Royal Oak Court**  
Option 1



**91-108 Royal Oak Court**  
Option 1



# Proposed Locations



**1-59 Fairchild House**  
**Oak Court**  
Option 1



**1-59 Fairchild House**  
**Oak Court**  
Option 2



**1-60 Burt House**  
Option 1