

# Estate Recycling Programme Portland Rise Estate



# Introduction to the ERP Team

Christos Tympanaris – Estate Recycling Programme Manager

Daljit Assi – Estate Recycling Project Manager

Andrew Dove – Estate Recycling Project Officer

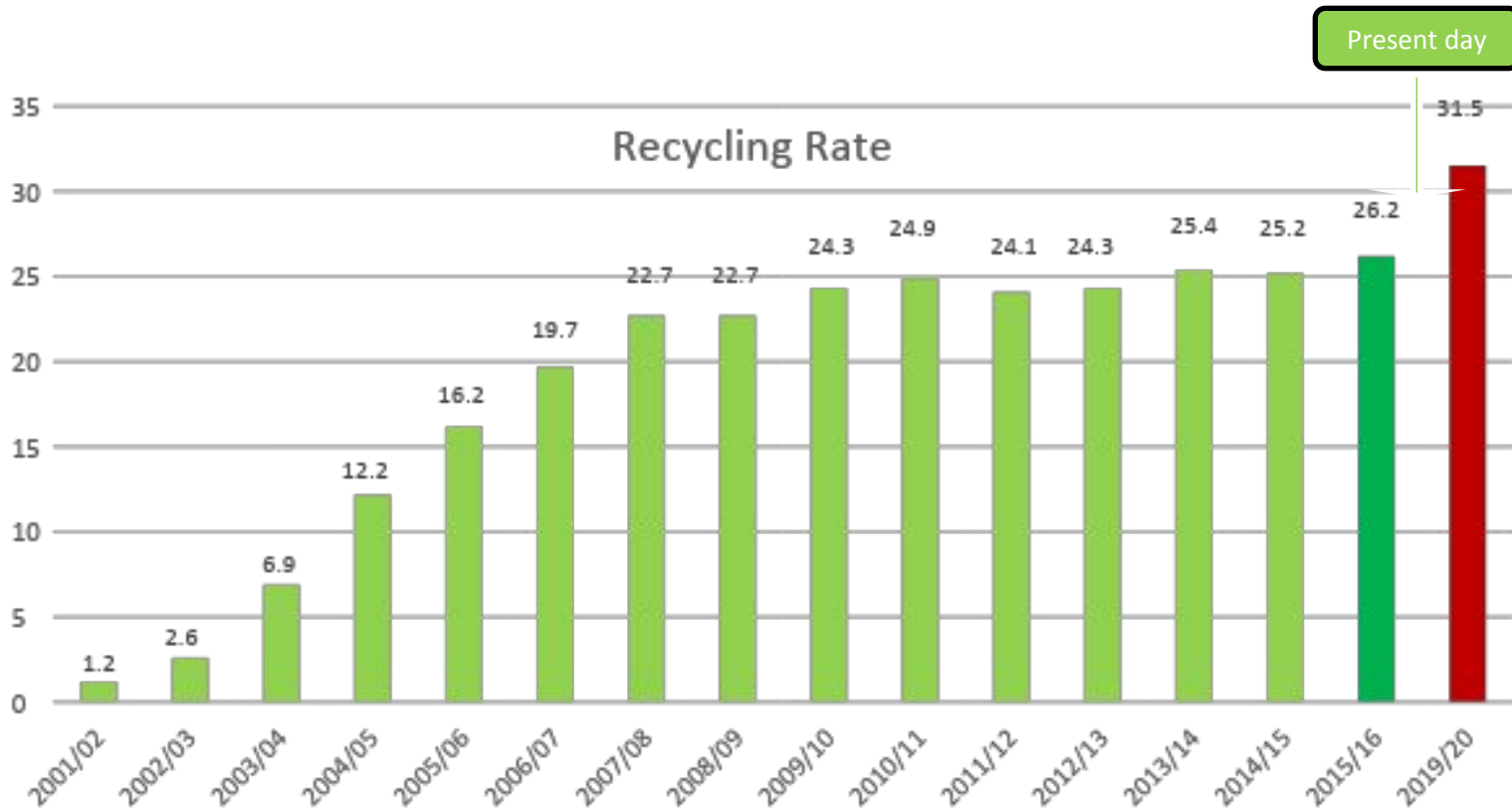
Kirsty Ainsworth – Estate Recycling Project Support Assistant

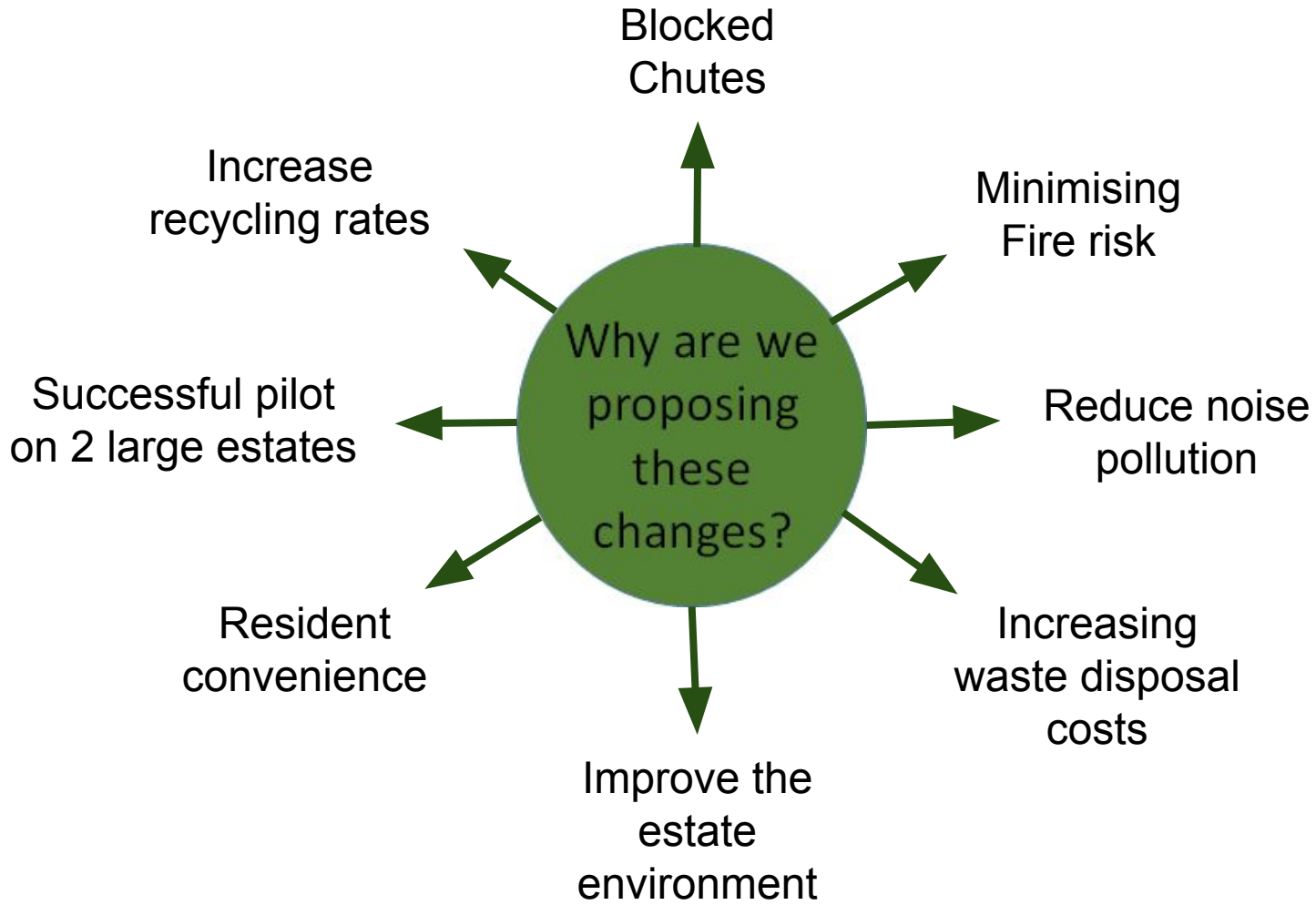
# Recycling Rate Targets

2020 targets:

Recycling rate 50% NLWA or 31.5% for Hackney;

Recycling performance in Hackney Housing estates is very low: 8%-10%





# What have we done so far?



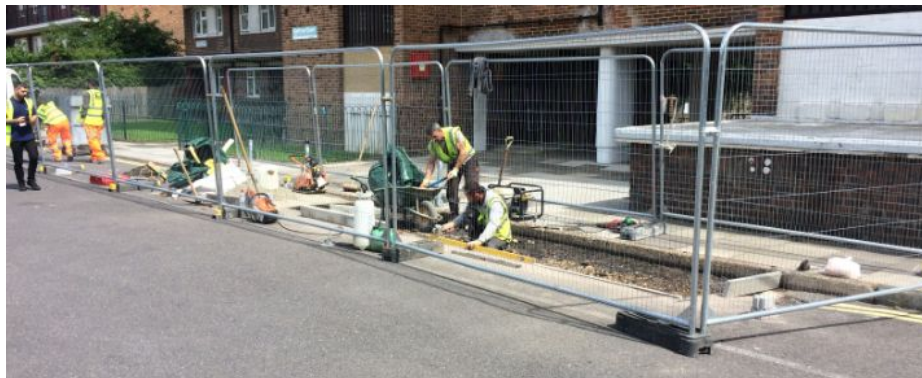
# Before & After



# Before & After



# Before & After





# Hopper before and...



... after removal



# Bin chamber before...



# ...and after



# Portland Rise Estate Information

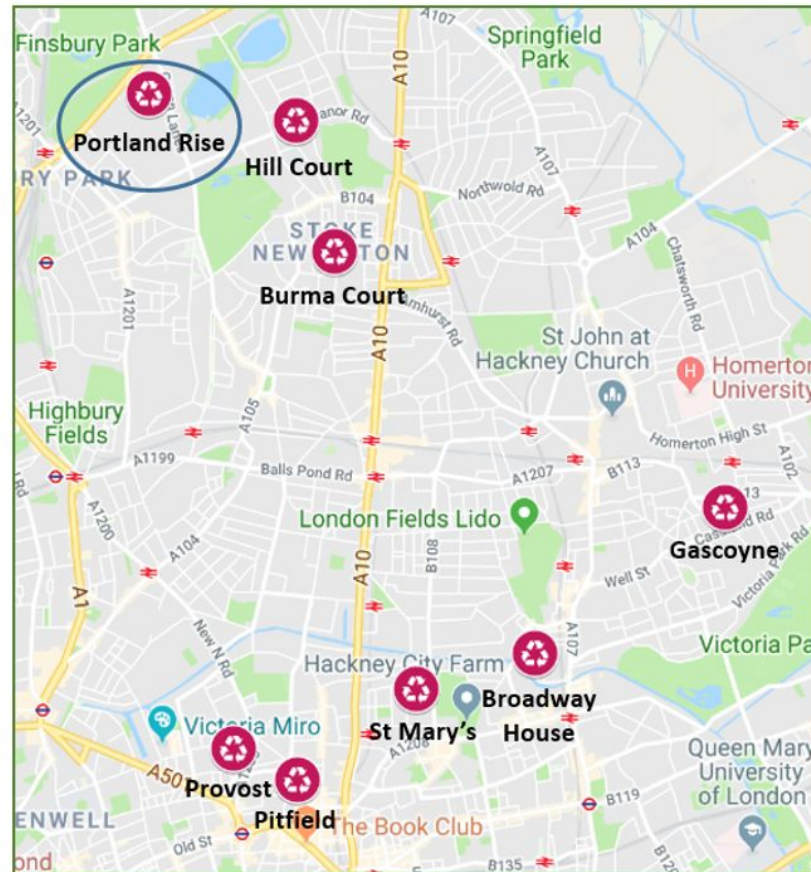
- The costs for unblocking the chutes at Portland Rise from 2005 to 2017 was £7,356.

Block Name	Max distance to recycling bins
1-12 Warwick House	3m
1-18 Salk House	2m
1-24 Buckingham House	24m
1-29 Windsor House	27m
1-29 Balmoral House	47m
1-40 Fleming House	22m
1-29 Holyrood House	53m
1-14 Nottingham House	45m



# Proposals

We are expanding the project to deliver these infrastructure changes to 8 more estates over the next 2 years.





**Proposed Recycling Sites for Portland Rise Estate**

**NORTH**

Scale: 1:1000 at A4

**Hackney**

Ref:  
14 November 2018

Produced by: Waste Strategy  
email:

This product includes mapping data licensed from Ordnance Survey with the permission of HMSO © Crown Copyright 2018. All rights reserved. License number: 100019835.



QUESTIONS



# Proposed Locations



**Buckingham & Windsor House**  
Option 1



**Fleming House & Nottingham House**  
Option 1



**Holyrood House**  
Option 1

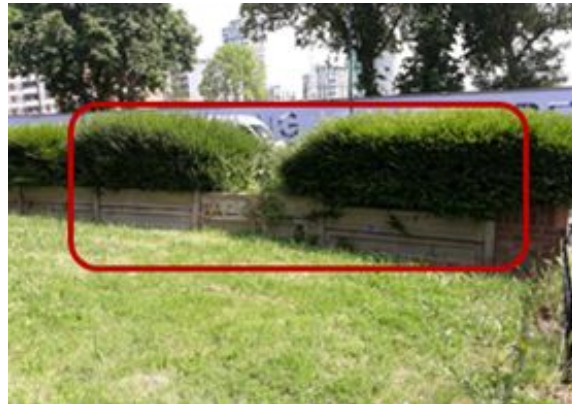


**Balmoral House**  
Option 1

# Proposed Locations



**Warwick House**  
Option 1



**Salk House**  
Option 1