

# Estate Recycling Programme St Mary's Estate



# Introduction to the ERP Team

Christos Tympanaris – Estate Recycling Programme Manager

Daljit Assi – Estate Recycling Project Manager

Andrew Dove – Estate Recycling Project Officer

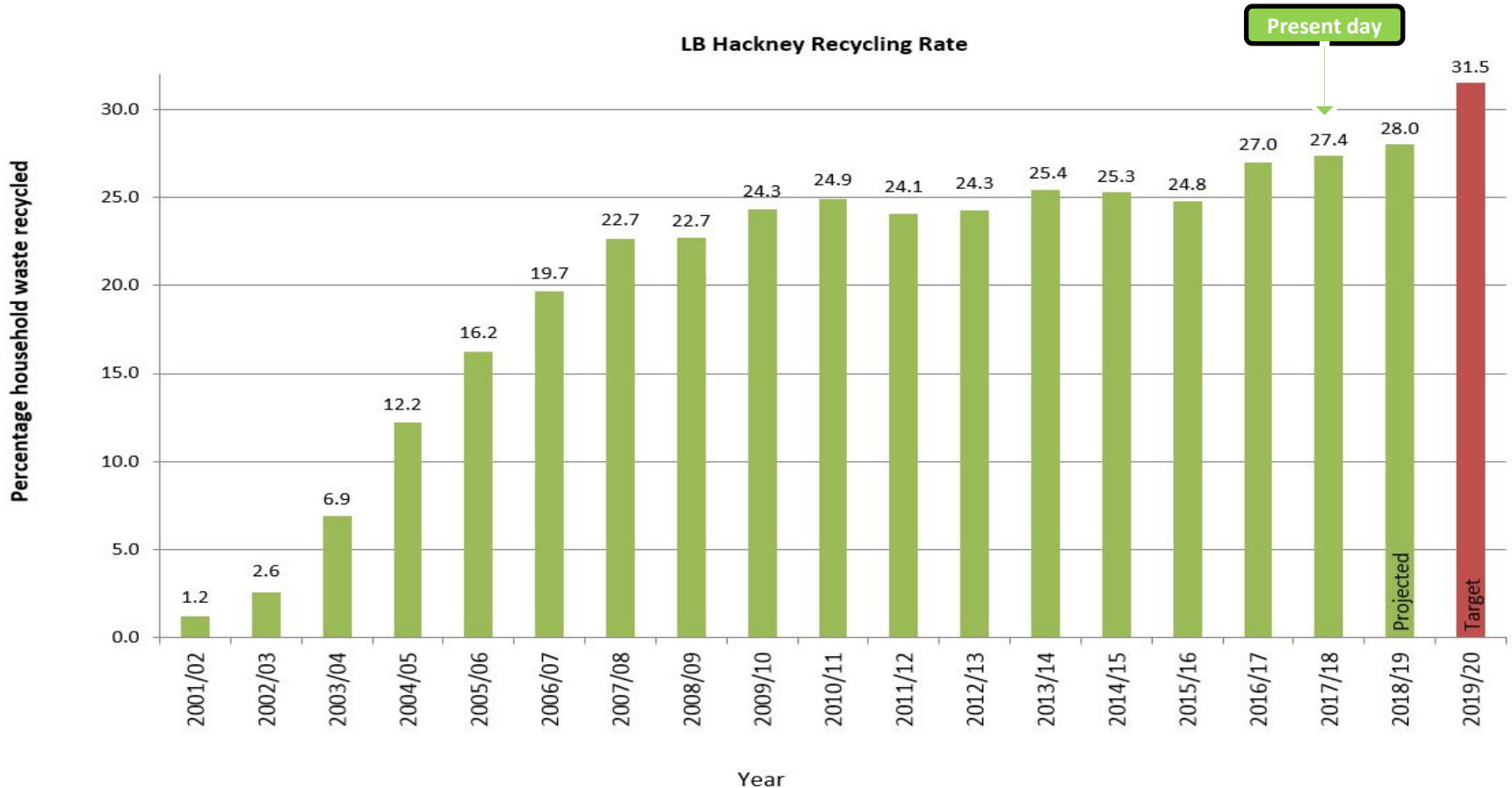
Kirsty Ainsworth – Estate Recycling Project Support Assistant

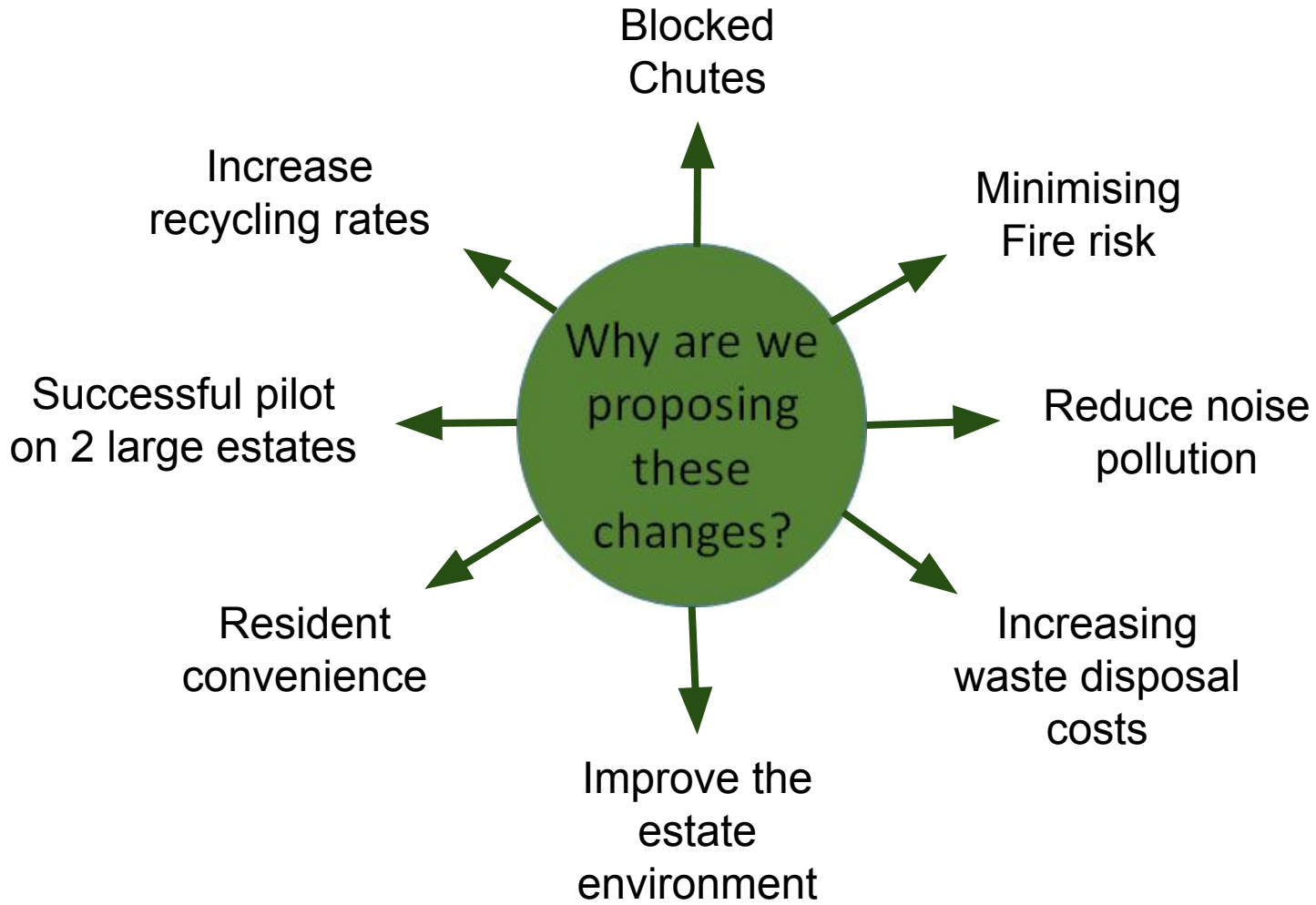
# Recycling Rate Targets

2020 targets:

Recycling rate 50% NLWA or 31.5% for Hackney;

Recycling performance in Hackney Housing estates is very low: 8%-10%







# What have we done so far?





# Before & After

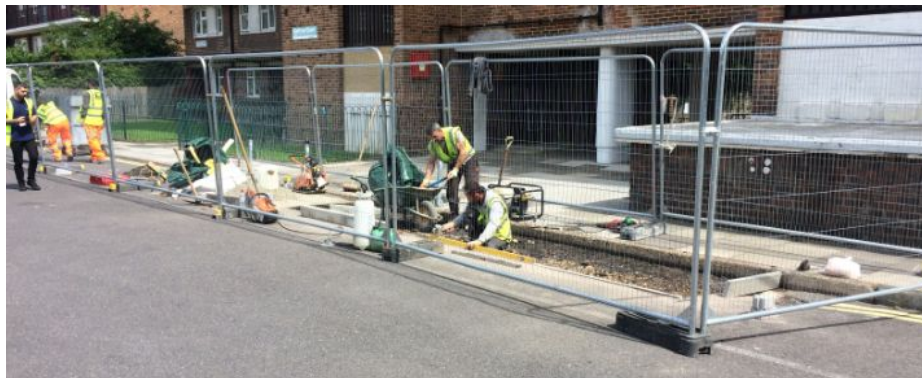


# Before & After





# Before & After





# Hopper before and...



... after removal



# Bin chamber before...



# ...and after





# St Mary's Estate Information

- The cost of clearing the blocked chutes at St Mary's Estate from 2005 to 2017 was £4,641.93
- The chutes have been blocked 92 times since 20th March 2017 to present day.
- The majority of the bins are close to the windows and doors which is a possible fire risk.
- A lot of the recycling bins at St Marys Estate are far away from the blocks with one block for example 120m away...



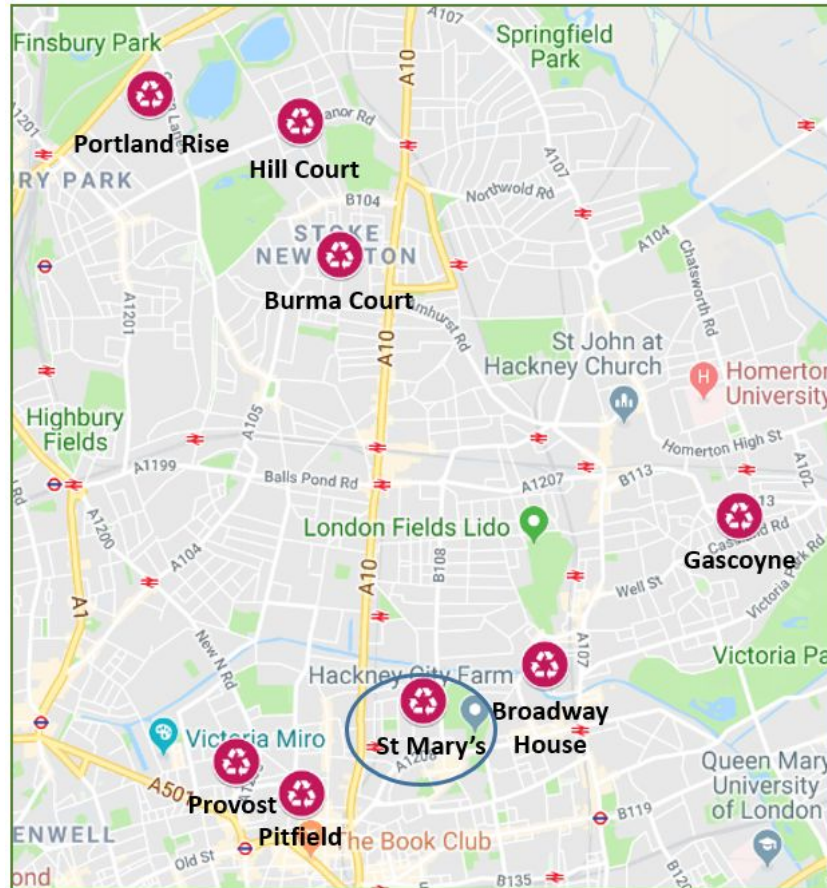
# St Mary's Estate Information

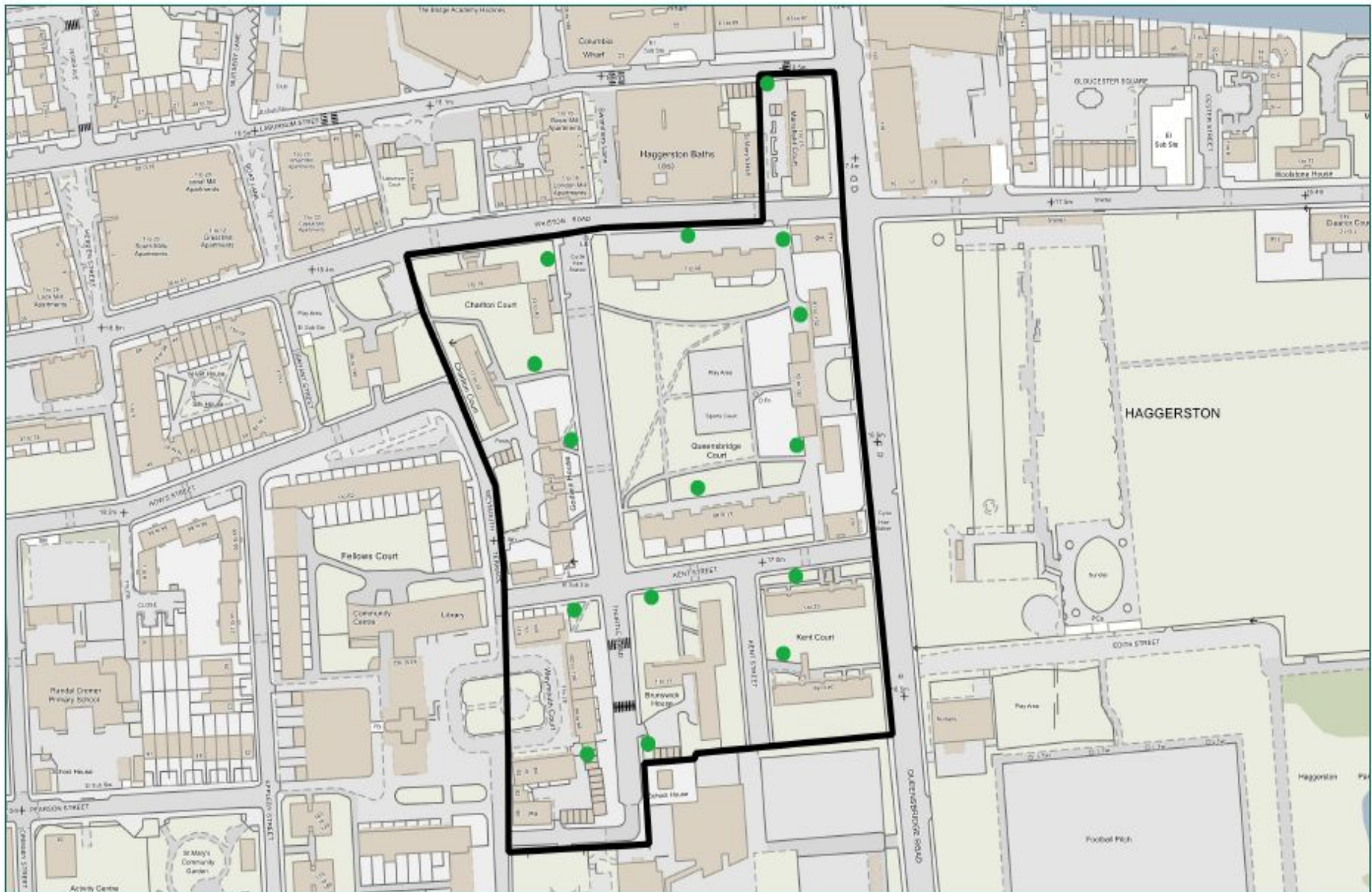
Block Name	Max distance to recycling bins
1-14 Godwin House	18m
15-28 Godwin House	1m
29-42 Godwin House	18m
1-16 Charlton Court	5m
1-16 Weymouth Court	120m
1-23 Kent Court	45m
1-25 Mansfield Court	4m
1-37 Brunswick House	54m
17-22 Weymouth Court	72m
17-32 Charlton Court	7m
24-46 Kent Court	8m
33-40 Charlton Court	3m
41-60 Queensbridge Court	46m
61-80 Queensbridge Court	13m
82-92 Weymouth Terrace (and 23-28 Weymouth Court)	106m
1-20 Queensbridge Court	21m
21-40 Queensbridge Court	55m
81-96 Queensbridge Court	14m
97-120 Queensbridge Court	14m
121-132 Queensbridge Court	25m



# Proposals

We are expanding the project to deliver these infrastructure changes to 8 more estates over the next 2 years.





Scale: 1:2000 at A4

### Proposed Recycling Sites for St Mary's Estate



Ref.

23 November 2018

Produced by: Waste Strategy

email:

This product includes mapping data licensed from Ordnance Survey with the permission of HM50 © Crown Copyright 2018. All rights reserved. License number: 100019626.





QUESTIONS



# Proposed Locations



**1-23 Kent Court**  
Option 1



**1-37 Brunswick House**  
Option 1



**1-16 Weymouth Court** Option 1



# Proposed Locations



**17-32 Weymouth Court**  
Option 1



**82-92 Weymouth Court**  
Option 1



**23-28 Weymouth Court**  
Option 1



**1-14 Godwin House**  
Option 1



**15-28 Godwin House**  
Option 1



**29-42 Godwin House**  
Option 1



# Proposed Locations



**1-16 Charlton Court**  
Option 1



**17-32 Charlton Court**  
Option 1



**33-40 Charlton Court**  
Option 1



**41-60 Queensbridge Court**  
Option 1



**61-80 Queensbridge Court**  
Option 1



**81-96 Queensbridge Court**  
Option 1

# Proposed Locations



**1-20 Queensbridge Court**  
Option 1



**21-40 Queensbridge Court**  
Option 1



**1-25 Mansfield Court**  
Option 1