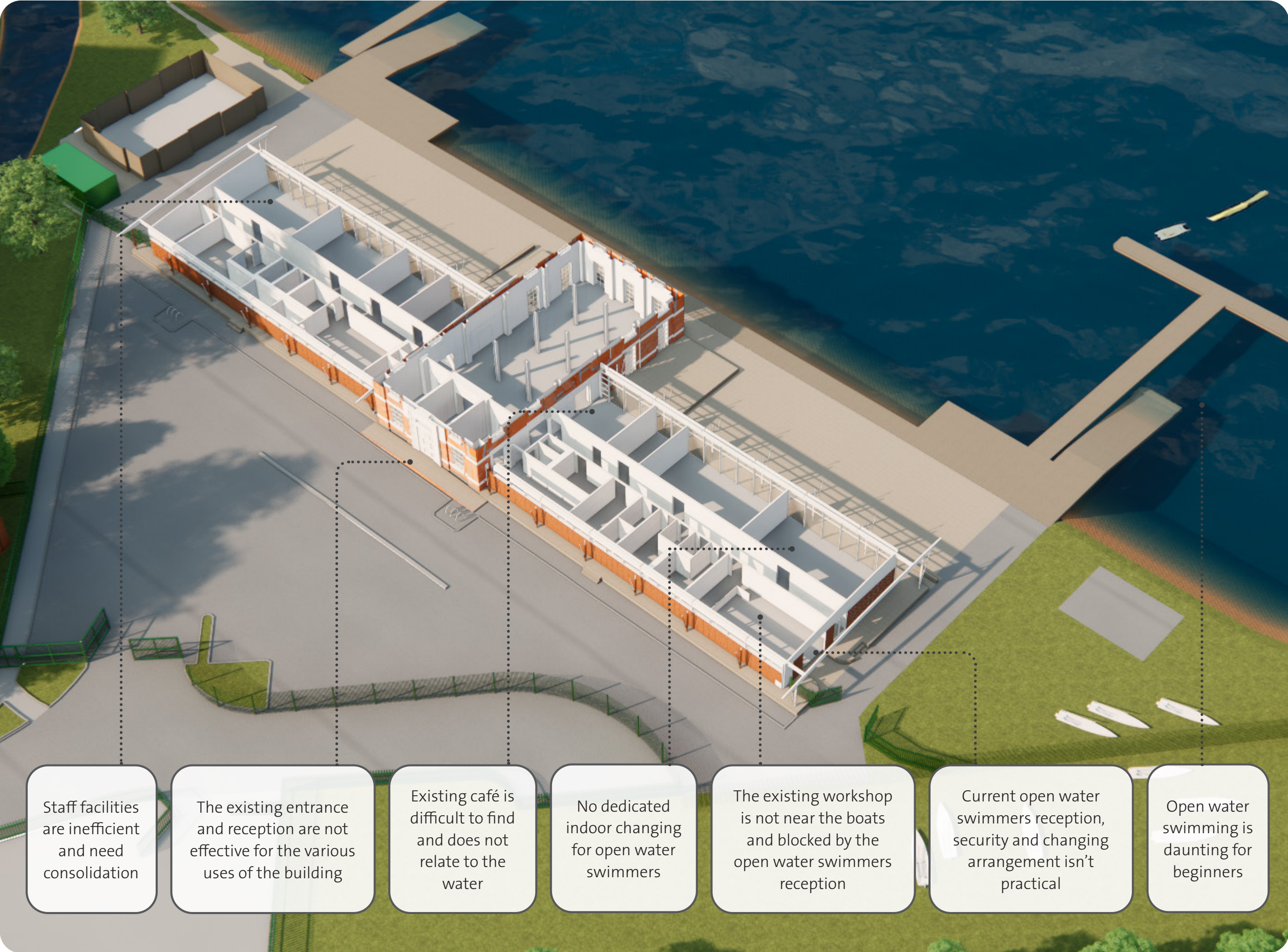


WEST RESERVOIR CENTRE

CHALLENGES WITH THE EXISTING BUILDING & QUESTIONS CONSIDERED



How can we improve the facility for all water sports?



How could we reconsider the location & use of the café?



What are the variety of uses for the community events space?



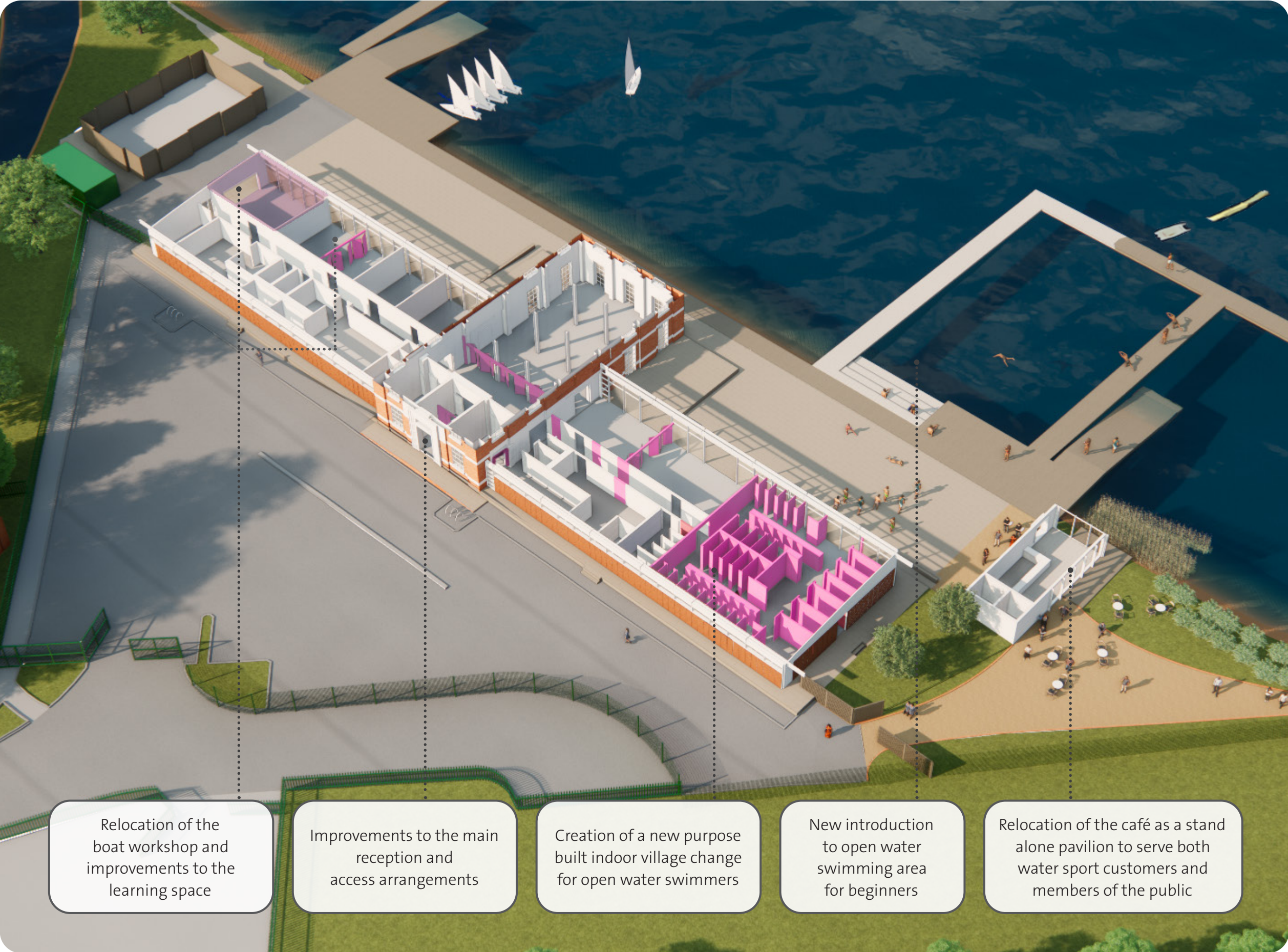
How can we improve the arrival to and accessibility of the building?



How can we create better ancillary facilities for open water swimmers?

WEST RESERVOIR CENTRE

BUILDING DESIGN PROPOSALS & EXAMPLES



Relocation of the boat workshop and improvements to the learning space

Improvements to the main reception and access arrangements

Creation of a new purpose built indoor village change for open water swimmers

New introduction to open water swimming area for beginners

Relocation of the café as a stand alone pavilion to serve both water sport customers and members of the public



Village change lockers & cubicles example



Village changing cubicle arrangement example



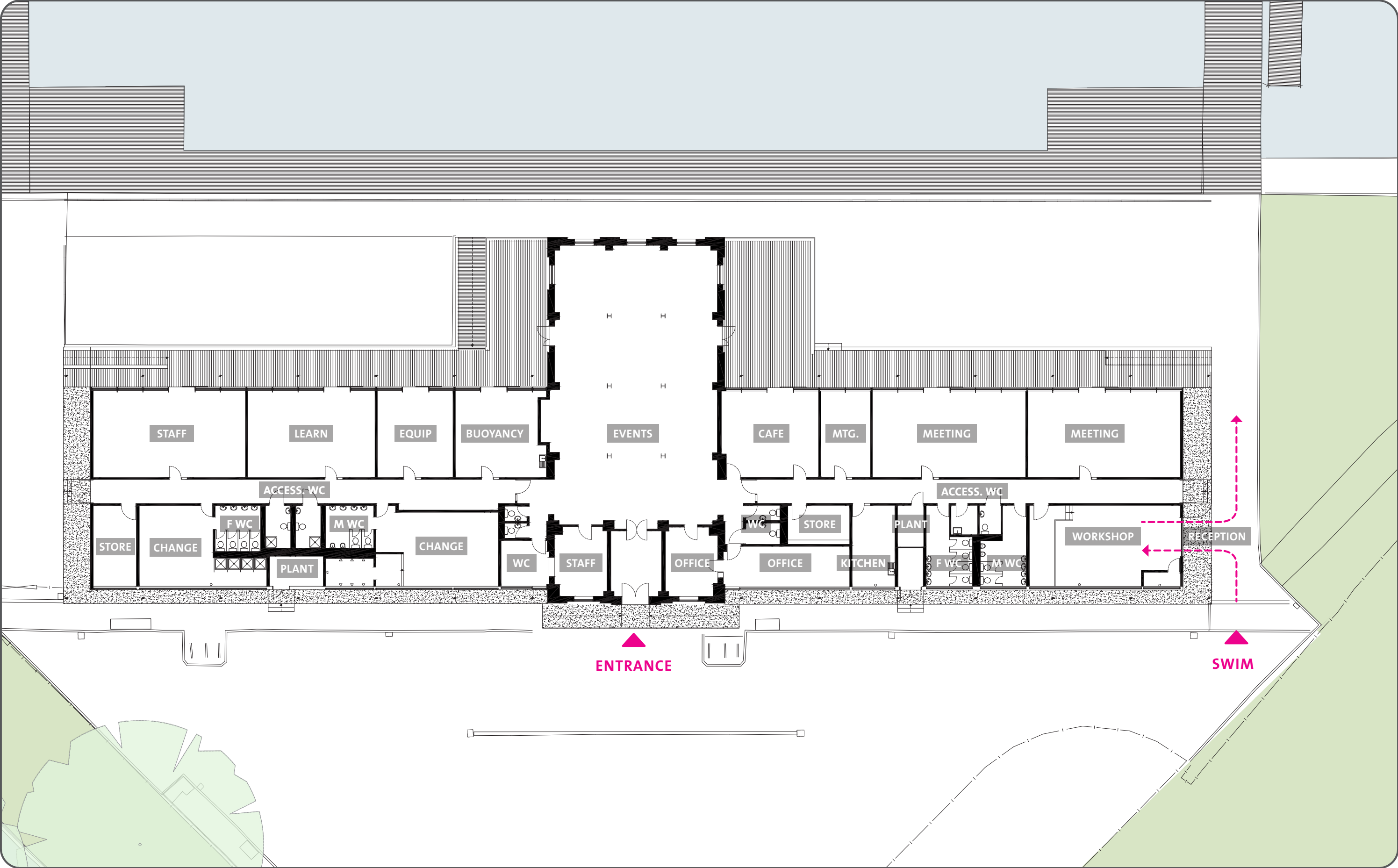
Café example



Café example

WEST RESERVOIR CENTRE

EXISTING PLAN



WEST RESERVOIR CENTRE

PROPOSED PLAN

