



Zone R Displacement (Rectory Road)

Parking Consultation



1. Why am I being consulted?

The Council recently consulted nearby roads in the Cazenove and Hackney Downs Wards on the introduction of parking controls. The results of the consultation indicated that a number of streets had majority support for the introduction of parking controls and as a result parking controls are being introduced in these areas. You can view the results of this consultation at www.hackney.gov.uk/parking-hys.

As explained in our previous correspondence, Parking Services recognise that the introduction of controls in this area will have an impact on uncontrolled roads in the eastern section of the area such as Narford Road.

To ensure that we minimise the impact of parking pressure in these areas, we are now conducting a combined Stage 1 and 2 consultation on the introduction of parking controls and the proposed design of parking controls in uncontrolled roads to the east of the area including sections of Northwold Road, Alconbury Road, Narford Road, Reighton Road, Ickburgh Road, Geldeston Road (sections of Northwold) and Evering Road (northern section).

Please see enclosed map for more information about the area being consulted and proposed design of the parking restrictions.

How can I have my say?

You can have your say by completing the attached questionnaire and returning it using the Freepost envelope enclosed or online by visiting www.hackney.gov.uk/parking-hys by the **2 December 2016**.

Please note that this is a stage one and two consultation, where a decision is being made on whether parking controls should be introduced. If there is support for parking controls in your area, we will propose to install parking restrictions as shown in the attached map. If you have any comments on the proposed design changes please let us know what these are in the comments section in the attached questionnaire.

For further information on the consultation please contact Parking Services on **020 8356 8877** or visit www.hackney.gov.uk/parking-hys.

2. What is a Parking Zone (PZ)?

A Parking Zone (PZ) is an area where all kerbside space is controlled by either yellow lines or parking places which generally have the same operational hours and days of control.

There are 3 types of zones currently used in Hackney.

Controlled Parking Zone (CPZ)

This is where zone entry plates are used to indicate the operational hours of the parking bays and single yellow lines within the zone. Within a CPZ, signs are not required to indicate the operational hours of single yellow lines or parking bays throughout the zone.

Parking Zone (PZ)

This is where there are no large entry signs to the zone. All parking bays and single yellow lines are signed

with the operational hours of the zone at each location.

Restricted Parking Zones (RPZs)

These are where there are no lines at all; instead the restrictions are individually signed. RPZs are only used where there are special circumstances such as narrow streets or special carriageway materials (e.g. cobbles) that make lining inappropriate.

2.1 What is the purpose of a parking zone?

Parking zones provide a range of benefits to local communities. Listed below are some of the purposes and benefits of a parking zone in an area.

- Effectively manages supply and demand for on street parking in an area
- Improves road safety and visibility for all road users and pedestrians
- Reduces parking stress and traffic congestion
- Improves the local environment and local air quality by reducing CO2 emissions by discouraging unnecessary car use
- Assists the Council prioritise parking spaces according to need (e.g. resident only parking to protect the needs of local residents from non – local demands of commuters)
- Visitor only parking close to businesses to protect the needs of local businesses.

2.2 How does the Council decide whether a parking zone is introduced?

The Council decision to implement a parking zone in an area is based on a combination of the following factors:

- feedback from local residents and businesses responding to a consultation (petitions are not factored into the percentage support)
- road safety
- traffic flow
- supply and demand for parking
- the environmental and air quality impacts of parking and traffic.
- All the factors above have an equal weighting in the decision making process.

The feedback received from the consultation is analysed on a street-by-street or part-of-street basis and are used as part of the decision making process on whether or not to introduce a parking zone and the potential boundary of any new zone.

Although the consultation responses form a key part in the decision making process for the introduction of any parking zone, the final decision will also take account of some or all of the factors bullet pointed above. It should be noted that that the cost of introducing any proposed measures is also considered when making any final decision. For the avoidance of doubt, a parking zone consultation is not a referendum, as public opinion is only one of several factors that must be considered. We will break down the responses we receive so that we know the majority of support in each street or part of street.

2.3 How does the Council decide on the hours of operation?

While in some parts of Hackney, there are circumstances that necessitate specific hours of control, many areas in Hackney share the same characteristics and are suitable for similar hours of control as other parking zones which are already in force; for example residential areas are typically controlled from Monday to Friday 8.30am to 6.30pm.

As your area forms part of a displacement consultation, if the majority of residents and businesses in your area are in favour of parking restrictions, you will join existing parking zone R.

The operational hours of the recently approved parking Zone R is **Monday – Friday, 7am to 11am**.

3. The consultation process

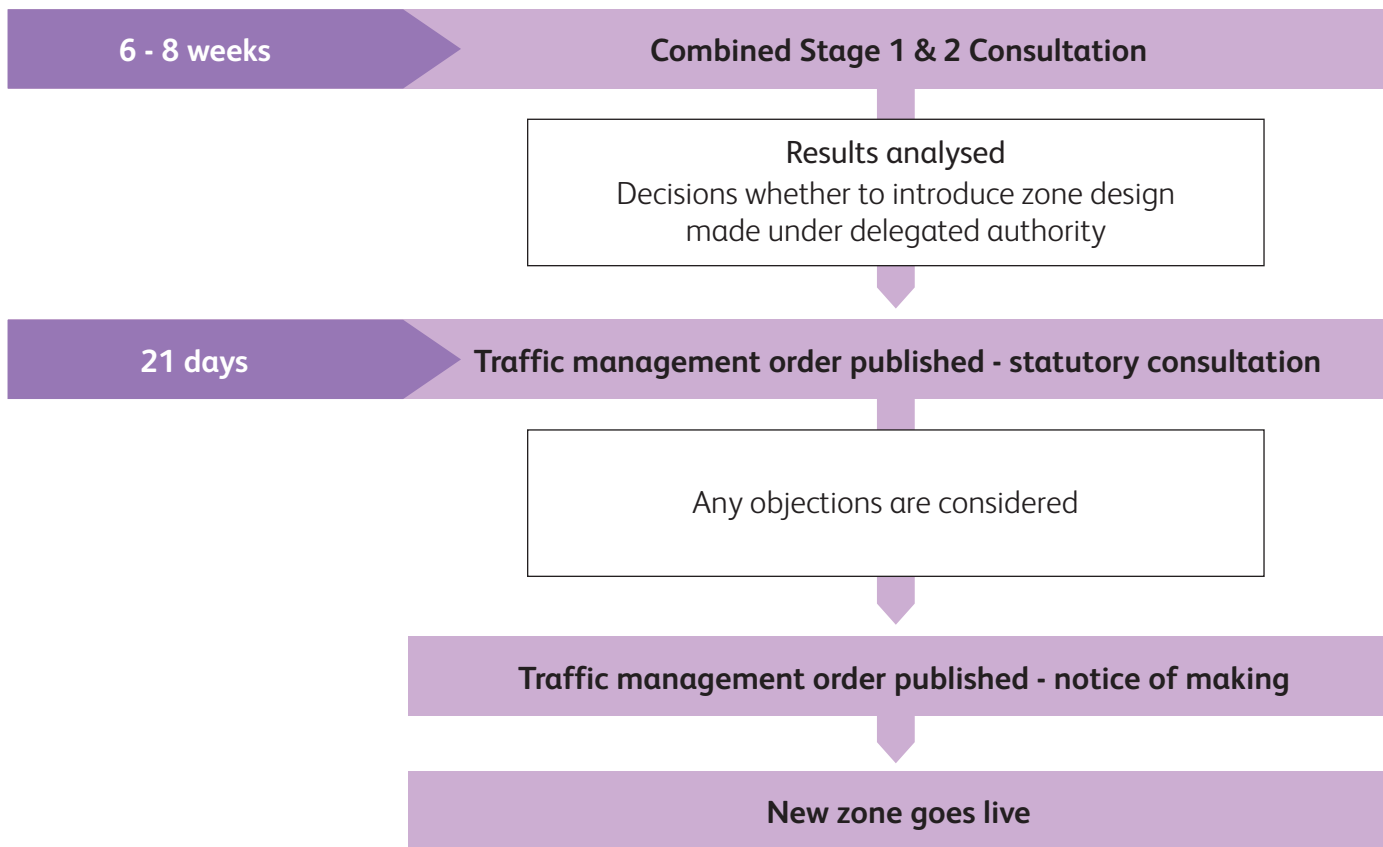
3.1 Informal consultation

A consultation pack including a questionnaire, letter and map is delivered to all affected residents and businesses in the area.

The Council is undertaking a combined Stage 1 & 2 public consultation. A combined Stage 1 & 2 public consultation combines the ‘in principle’ and detailed consultation stages together.

The diagram below describes the combined stage 1 and 2 consultation process that is to be undertaken by the Council before deciding whether to introduce a PZ.

Combined stage 1 and 2 consultation



3.2 Statutory consultation

Once the public consultation has been completed and any recommendations approved, the Council is then required to carry out a Statutory Consultation. This requires for a Traffic Management Order notice to be advertised in the Hackney Today for a 21 day period. This process allows anyone to formally declare their representation on the changes proposed. All representations received will be considered where, the Council is required to draft a decision audit report detailing the objections and its recommendation on whether these objections will be upheld or not. The report is then approved by the Assistant Director of Public Realm prior to the measures being implemented.

4. How can I have my say?

Please complete the enclosed questionnaire and return it to us using the freepost envelope provided by: **Friday 2 December 2016.**

Alternatively you can complete your questionnaire online by visiting:

www.hackney.gov.uk/parking-hys

If you have any further questions on this consultation, please contact us using the details provided below:

Email: consultparking@hackney.gov.uk

Telephone: **020 8356 8877**

5. What happens next?

Drop In Session - Monday 24 October 2016

A drop in session will be held at BSIX College, Brooke House, Kenninghall Road, London E5 8BP between 5pm and 7pm.

Residents and businesses are encouraged to attend and raise any queries or provide feedback which they may have to us in person.

Closing Date – Friday 2 December 2016

Closing date of consultation and last day to return your questionnaire.

Consultation Results – Date: January 2017

Consultation results will be made available to the residents and businesses. A summary consultation pack, detailing the results, will be sent to all residents and businesses in the area by post and will be available on the Hackney website. If you have any questions regarding the consultation please contact us through the Hackney Service Centre on **020 8356 8877** or email: **consultparking@hackney.gov.uk**.

6. Frequently Asked Questions

Can I submit more than one consultation response?

Only one consultation response will be accepted per person. If you would like to submit more than one questionnaire from the same household, please ensure that you provide your name as the Council will only accept more than one questionnaire from the same address if a name has been provided. This is to ensure that there are no duplications.

Will I have to buy a parking permit?

If your property is located within a parking zone you will need to purchase either a resident or business permit to park on your street during the operational hours of the parking zone.

How much will a parking permit cost?

The Council has introduced a fairer policy for parking permits in the Borough according to the size of the vehicle and its engine size. As a guide, an annual resident permit for a normal engine size car currently costs £112.00 (1200-2000cc). The equivalent permit for a business vehicle costs £540.00.

Resident permit prices – 1 September 2016 to 31 August 2017

Please note; as part of our drive to reduce pollution within the borough, the price of permits will be based on vehicle emissions rather than the engine size from September 2016.

Resident permit prices during this period will be based on the midpoint between your vehicle's permit price based on its engine size, and its future price based on emission based charging. For example, if your permit price is currently £163, and will fall to £112 from 2017, your permit price will be halfway between the two (£137.50). To find out how much your permit will cost over the next two years please visit our website; www.hackney.gov.uk/parking-permit-price-calculator.htm.

Resident permit prices, using emission-based charging (CO2) from September 2017

All permits after September 2017 will only be based in vehicle emissions.

Band		3 months	6 months	12 months
1	No local emissions	£10.00	£10.00	£10.00
2	Up to 120 g/km	£26.50	£38.50	£61.00
	Price including diesel supplement	£39.00	£63.50	£111.00
3	121 - 185 g/km, or under 1200cc*	£43.00	£67.00	£112.00
	Price including diesel supplement	£55.50	£92.00	£162.00
4	186 - 225 g/km, or 1200-2000cc*	£59.50	£95.50	£163.00
	Price including diesel supplement	£72.00	£120.50	£213.00
5	226 g/km +, or 2001cc*+	£76.00	£124.00	£214.00
	Price including diesel supplement	£88.50	£149.00	£264.00

There is a £10 discount when purchasing resident permits online or by post.

The diesel supplement will be £50 per year, and will be pro-rated for 3 and 6 month permits.

*Where no information is held on a vehicle's CO2 emissions, permit price will be calculated on engine size.

Where can my visitors park?

Residents are eligible to purchase visitor vouchers which allow visitors to park in any available resident permit, general permit (resident or business permits) or shared use (pay and display or permit) bay in the PZ.

You only need to use a voucher during operational hours. There are two types of vouchers that can be purchased by residents:

- A book of 20, 2hr scratch cards at a cost of £21
- A book of 5, one day scratch cards at a cost of £17.50

Please note that there is a £1 discount on all resident visitor vouchers if purchased online or by post. We provide Pay & Display parking for businesses visitors. Businesses are also able to buy vouchers for their own vehicles and their visitors, which cost £225 for a book of 10 scratch cards which allow parking in all zones for one day.

Where can I load and unload if I receive deliveries?

Active loading and unloading can take place on all single and double yellow lines where there are no loading restrictions and also in parking bays. For any specific requests, such as removals, you can request a dispensation or a bay suspension. Please visit our website for more information www.hackney.gov.uk/parking.

How can I apply for a disabled bay?

If you are a Blue Badge holder with no access to off street parking, you may be able to get a disabled parking bay installed outside your home. However, in order to qualify for a bay, you must be assessed by Social Services who will confirm whether a bay can be granted or not.

Once installed, although the disabled bay will be registered to you it can be used by any Blue Badge holder.

For any advice about disabled bays, please email disabledparking@hackney.gov.uk call **020 8356 8328**.

What if I have a Blue Badge or a Companion Badge?

Blue Badge holders are eligible to park in all shared use bays (pay and display and permit), pay and display only bays for an unlimited amount of time and for a maximum of 3 hours on single and double yellow lines. Blue Badge holders can also use any disabled bay.

Companion badge holders can park in the same bays as Blue Badge holders, but have the added advantage of being able to park in resident and permit parking bays within their home parking zone.

What if I live on an estate?

There are a number of Council housing estates in the area which have their own parking regulations; these are independent of parking zones and would not be affected. However, as an estate resident you would still be entitled to have your say on the existing design and hours of operation. Estate residents whose addresses fall within a parking zone are entitled to purchase an on-street permit.

Allocation of parking bays

In a parking zone, parking bays are allocated for different uses including disabled motorists, local residents, businesses and local visitors, according to the Council's 'hierarchy of parking need' - please see the table below.

Type of parking bay	Permit, voucher or ticket required
General Permit parking bay (Light Blue on map)	Resident or business parking permit
	Resident or business visitor voucher
Pay and Display parking bay (Red on map)	Pay and display ticket only
Shared Use parking bay (Pink on map)	Resident or business parking permit
	Resident or business visitor voucher
	Pay & display ticket

With regards to this consultation we have provisionally allocated 'permit holder' bays along the majority of roads, reflecting the make-up of the area. Some pay and display and shared use spaces have been allocated on sections of Kenninghall Road and Brooke Road for people visiting local shops and other amenities.



What if my street is not included in the PZ?

From past experience we are aware that parking displacement can occur in uncontrolled streets when new parking controls are installed nearby specifically in roads closest to the zone boundary. Residents and businesses are therefore given the opportunity to have a say on whether they want any controls, if similar controls are to be introduced in nearby streets, given that this is likely to have a significant impact on their parking ability.

If a road is not included within a parking zone, residents and businesses in uncontrolled streets can request parking controls if they are impacted by a PZ introduced nearby through the following process:

Email: consultparking@hackney.gov.uk

Phone: Hackney Parking Services on **0208 356 8877**

Online: www.hackney.gov.uk/parking-hys

For more information on the Council's Parking Policy please visit www.hackney.gov.uk/pep

What if I own a motorcycle?

Motorcycles can be parked free of charge in all bays within a PZ where residents and businesses can park. (This excludes; in Zone B where parking for motorcycles are restricted to motorcycle bays only and all pay and display bays). Motorcycles should be parked at a right angle to the kerb and, if possible at the end of the parking bay; you should use the dedicated motorcycle bays if available, rather than resident permit bays.

What if I live on a private road?

If you live on a private road which falls within the consultation area, your road will still be included in the consultation. Although your road will remain free of controls, you will still be entitled to have your say. If you would like your road to form part of the existing zone please let us know in the comments box of the enclosed questionnaire.

Do you consider road safety?

When reviewing parking restrictions, we have taken into account the safety of both pedestrians and motorists. We install either single or double yellow lines (no waiting at any time) to help prevent unsafe parking.

Any design changes are made in consultation with the Emergency Services (Ambulance, Fire Service and the Police) to ensure that there is sufficient road width to allow for the safe passage of emergency vehicles.





All design changes will conform to the design standards recommended by the Department for Transport (DfT). Most existing yellow lines in existing design have been placed for safety or access reasons and would be unlikely to change. Examples of these are:

- Junction protection - double yellow lines placed around the edges of road junctions to ensure visibility for drivers, cyclists, and pedestrians, and to allow space for wheelchair and pram users to safely cross.
- Double yellow lines painted across access points to private property and housing estates, so that we can remove any obstructing vehicles.
- Yellow lines painted along narrow roads to improve access or provide a passing point for vehicles

What if I live on a Car Free Property?

A Car Free Property will be under a Section 106 agreement and will be included in your lease or deeds. If you live on a Car Free Property you can still have your say on the design and hours of your parking zone but would not be eligible to purchase a parking permit.

If you want to apply for a permit and are not sure if you live in one of these areas please call us on **020 8356 8877**.

Are parking zones just a money making scheme for the Council?

No. By law revenue generated from PZs must be invested back into transport-related improvements such as highways, street scene, parking enforcement and safer car parks. It also contributes to the funding of the Freedom Pass scheme.

How will you use my personal information?

Hackney council will use the information you have provided for the purpose of identifying support for parking controls in the area.

No personal information you have given us will be passed on to third parties for commercial purposes.

Our policy is that all information will be shared among officers and other agencies where the legal framework allows it, if this will help to improve the service you receive and to develop other services.

If you do not wish certain information about you to be exchanged within the Council, you can request that this does not happen.

All information provided will be handled under the Data Protection Act 1998 strict controls.

7. More information



For more information about the cost of permits and visitor vouchers please refer to our website **www.hackney.gov.uk/parking** or call Hackney Parking Services on **020 8356 8877**.





If you would like to find out what this document says please tick the appropriate box, put your name, address and phone number at the bottom of this page and return it to the address below.

Bengali

এই দলিলে কি লেখা আছে সে সম্পর্কে যদি আপনি জানতে চান তাহলে অনুগ্রহ করে উপযুক্ত বাক্সে টিক দিন, এই পাতার নীচে আপনার নাম, ঠিকানা ও ফোন নম্বর লিখুন এবং এটি নীচের ঠিকানায় ফেরত পাঠান।

Somali

Haddii aad jeclaan lahayd in aad ogaato waxa dokumeentigani sheegayo fadlan calaamadi godka ku haboon, ku qor magacaaga, cinwaanka iyo telefoon lambarkaaga boggan dhankiisa hoose ka dibna ku celi cinwaanka hoose.

French

Si vous désirez connaître le contenu de ce document, veuillez cocher la case appropriée et indiquer votre nom, adresse et numéro de téléphone au bas de cette page et la renvoyer à l'adresse indiquée ci-dessous.

Spanish

Si desea saber de lo que trata este documento, marque la casilla correspondiente, escriba su nombre, dirección y número de teléfono al final de esta página y envíela a la siguiente dirección.

Kurdish

Ger hun dixwazin bizanibin ku ev dokument çî dibêje, ji kerema xwe qutîka minasib îşaret bikin, nav, navnîşan û hejmara telefona xwe li jêrê rûpel binivîsin û wê ji navnîşana jêrîn re bişînin.

Turkish

Bu dökümanda ne anlatıldığını öğrenmek istiyorsanız, lütfen uygun kutuyu işaretleyerek, adınızı, adresinizi ve telefon numaranızı bu sayfanın alt kısmına yazıp, aşağıdaki adrese gönderin.

Polish

Jeśli chcesz dowiedzieć się, jaka jest treść tego dokumentu, zaznacz odpowiednie pole, wpisz swoje nazwisko, adres i nr telefonu w dolnej części niniejszej strony i przeslij na poniższy adres.

Vietnamese

Nếu bạn muốn biết tài liệu này nói gì hãy đánh dấu vào hộp thích hợp, điền tên, địa chỉ và số điện thoại của bạn vào cuối trang này và gửi lại theo địa chỉ dưới đây.

Urdu

اگر آپ یہ جاننا چاہتے ہیں کہ دستاویز میں کیا لکھا ہے تو ازراہ کرم مناسب باکس میں صحیح کا نشان لگائیے اور اپنا نام، پتہ اور فون نمبر اس صفحہ کے نیچے لکھئے اور اسے نیچے دیئے گئے پتہ پر واپس بھیج دیجئے۔

Chinese

如果你想知道這分文件的詳細內容，請在方框內打鉤，在本頁下面寫下你的名字、地址和電話號碼並寄到下面的地址。

If you would like this document in any of the following formats or in another language not listed above, please complete and send the form to the address below.

In large print

In Braille

On Disk

On audio tape

In another language, please state:

Name:

Address:

Tel:

Return to: Please use the envelope provided