



# Parking Zone R (Rectory Road)

Parking Design Consultation

have  say

 Hackney

## Why I am being consulted?

Parking Services consulted you between August and October 2015 about the introduction of parking controls on your road and surrounding roads in your area (Stage 1 consultation in Zone E displacement area). During the consultation, all local residents and business owners in the 'uncontrolled' area were sent a consultation pack and were given the opportunity to have their say on the proposed introduction of parking controls.

As a result of the consultation and support from local residents, the Council approved the introduction of parking controls in the following streets:

- Benthall Road
- Evering Road (section from Jenner Road to Brooke Road)
- Maury Road
- Stoke Newington Common
- Brooke Road (section from Jenner Road to Rendlesham Road)
- Norcott Road
- Ottaway Street
- Rendlesham Road

Before we install the new parking restrictions, we want to ensure that we have got the design layout and use of the parking bays right. We want to know your views on the proposed design (including the type and location of different parking bays) and hours of operation for your zone.

## Parking Design

In a parking zone (PZ) all kerb-side space has to be marked with either parking bays or yellow line restrictions. Parking bays are allocated for different users, including local residents, businesses and pay and display parking for visitors – see the table below.

Where can I park with my permit?	Type of parking bay
Resident permit holders	Resident parking bays
	General permit bays
	Shared use bays (pay and display and permit holders)
Business permit holders	General permit bays
	Shared use bays (pay and display and permit holders)
	Business permit bays
Pay and Display ticket holders	Pay and Display bays
	Shared use bays (pay and display and permit holders)

Parking bays have been provisionally located where the road is safe and wide enough to do so. In all other areas we will install double yellow lines (no waiting at any time restrictions) to improve road safety, improve traffic flow and provide protection for accesses. Double yellow lines are also installed over all private driveways in the area so that we can prevent people blocking private access points 24 hours a day, 7 days a week.

**Please see enclosed map which details the planned design of the parking bays in your street.**

## Jenner Road and Rectory Road

Parking Services will also be consulting the residents and businesses in the nearby Parking Zone E; including all properties on Jenner Road, Evering Road (properties between Rectory Road and Jenner Road), Brooke Road (properties between Rectory Road and Jenner Road) and Rectory Road (properties between Stoke Newington common and Jenner Road) on whether they would like to move into the Parking Zone R boundary (as this would provide them with more options to park on nearby roads) or remain part of Parking Zone E in the near future.

## Operational hours

As your road will be joining a new Parking Zone (Zone R), we would like to hear your views on your preferred hours of operation for the parking zone. You can have your say using the attached questionnaire.

### How does the Council decide on the hours of operation?

While in some parts of Hackney there are circumstances that necessitate local hours of control, there are many areas that share characteristics and are suitable for similar hours of control as other parking zones, which are already in force; for example, residential areas are typically controlled from Monday to Friday 8.30am to 6.30pm. Other key features may look at whether the area is a business district, residential area or both.

The range of operational hours that we are proposing is the same as we currently have in place in various other parking zones within the borough as well as shorter hours which have been suggested by residents within the area (See questionnaire for list of proposals).

Having similar operational hours to nearby zones helps motorists understand the times of control in each area and increase the service's efficiency by making storage and maintenance of signs easier. However, we will take into account any other suggestions made by the residents and businesses during the consultation.

If you would like to propose different operational hours you must ensure that you state this within the additional comments box in your response so that it can be taken into account during the analysis stage.

If we introduce a parking zone, the decision on the operational hours will usually be based on a clear majority support from the options provided. If there is no overall majority support for a particular option, the Council will normally base its decision on what it considers to be best option for the area. This will take into account the operational hours of neighbouring parking zones as well as the demographic makeup of the area.

# What happens next?

## Drop in Sessions - Date: 29 June 2016

Drop in sessions will be held at **BSIX Brooke House Sixth Form College, Kenninghall Road, London E5 8BP between 5pm to 7pm**. Residents and businesses are encouraged to attend and raise any queries or provide feedback which they may have to us in person.

## Closing Date - Date: 31 July 2016

Closing date of consultation and last day to return your questionnaire.

## Consultation Results - Date: September 2016

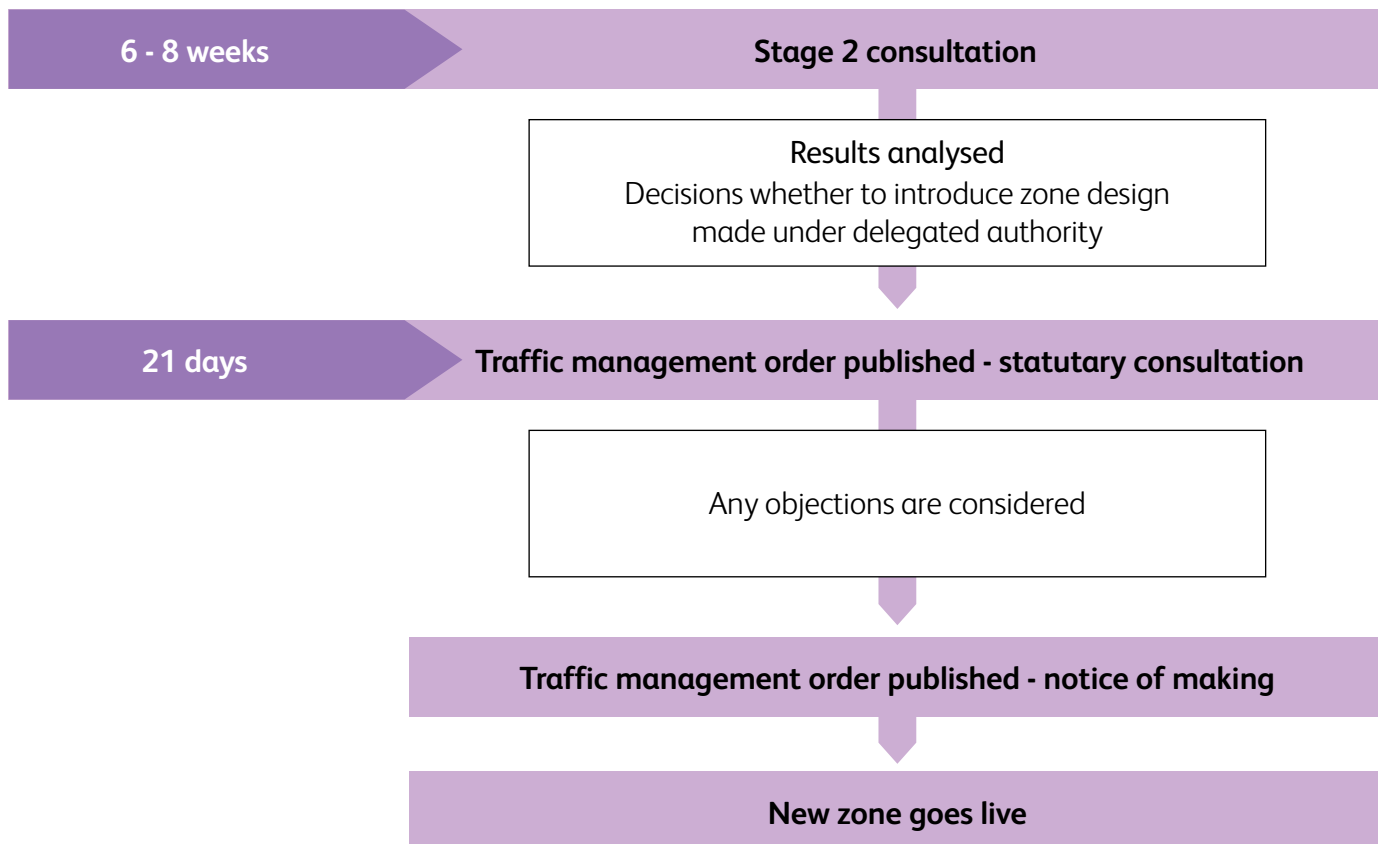
Once the consultation has closed we will analyse all feedback and present the findings and final design in a formal report which will be submitted for Council approval.

Once the report has been approved we will send all residents a summary letter explaining the final design and when we anticipate works to take place. The letter will also explain when you can start applying for a parking permit and how this can be done.

If you have any questions regarding the consultation please call Parking Services on **020 8356 8877** or e-mail **consultparking@hackney.gov.uk**. Additional information about the consultation can also be viewed on our website: **www.hackney.gov.uk/parking**.

# Stage Two detailed design consultation process

## Stage 2 consultation



## Statutory consultation

Once the public consultation has been completed and any recommendations approved, the Council is then required to carry out a Statutory Consultation. This requires for a Traffic Management Order notice to be advertised in the Hackney Today for a 21 day period. This process allows anyone to formally declare their representation on the changes proposed. All representations received will be considered where, the Council is required to draft a decision audit report detailing the objections and its recommendation on whether these objections will be upheld or not. The report is then approved by the Assistant Director of Public Realm prior to the measures being implemented.

## Frequently asked questions

### Can I submit more than one consultation response?

Only one consultation response will be accepted per person. If you would like to submit more than one questionnaire from the same household, please ensure that you provide your name as the Council will only accept more than one questionnaire from the same address if a name has been provided. This is to ensure that there are no duplications.

### Will I have to buy a parking permit?

If your property is located within a parking zone you will need to purchase either a resident or business permit to park on your street during the operational hours of the parking zone.

### How much will a parking permit cost?

The Council has introduced a fairer policy for parking permits in the Borough according to the size of the vehicle and its engine size. As a guide, an annual resident permit for a normal engine size car currently costs £112.00 (1200-2000cc). The equivalent permit for a business vehicle costs £540.00

### Resident permit prices, using engine size (cc) until 31 August 2016

Engine size (cc)	3 months	6 months	12 months
Greenest vehicles	£10	£10	£10
Greener fuels and smaller engines (under 1200cc)	£26.50	£38.50	£61.00
Normal sizes (1200 - 2000cc)	£43.00	£67.00	£112.00
Large engine (2001 - 3000cc)	£59.50	£95.50	£163.00
Very large (3001 - 4000cc)	£76.00	£124.00	£214.00
Extremely large (4001 plus cc)	£92.50	£152.50	£265.00

**There is a £10 discount when purchasing resident permits online or by post.**

## Resident permit prices – 1 September 2016 to 31 August 2017

Please note; as part of our drive to reduce pollution within the borough, the price of permits will be based on vehicle emissions rather than the engine size from September 2016.

Resident permit prices during this period will be based on the midpoint between your vehicle's permit price based on its engine size, and its future price based on emission based charging. For example, if your permit price is currently £163, and will fall to £112 from 2017, your permit price will be halfway between the two (£137.50). To find out how much your permit will cost over the next two years please visit our website;

[www.hackney.gov.uk/parking-permit-price-calculator.htm](http://www.hackney.gov.uk/parking-permit-price-calculator.htm)

## Resident permit prices, using emission-based charging (CO2) from September 2017

All permits after September 2017 will only be based in vehicle emissions.

Band		3 months	6 months	12 months
1	No local emissions	£10.00	£10.00	£10.00
2	Up to 120 g/km	£26.50	£38.50	£61.00
	Price including diesel supplement	£39.00	£63.50	£111.00
3	121 - 185 g/km, or under 1200cc*	£43.00	£67.00	£112.00
	Price including diesel supplement	£55.50	£92.00	£162.00
4	186 - 225 g/km, or 1200-2000cc*	£59.50	£95.50	£163.00
	Price including diesel supplement	£72.00	£120.50	£213.00
5	226 g/km +, or 2001cc*+	£76.00	£124.00	£214.00
	Price including diesel supplement	£88.50	£149.00	£264.00

There is a £10 discount when purchasing resident permits online or by post.

The diesel supplement will be £50 per year, and will be pro-rated for 3 and 6 month permits.

\*Where no information is held on a vehicle's CO2 emissions, permit price will be calculated on engine size.

## What if I own a motorcycle?

Motorcycles can be parked in all bays within a PZ free of charge (this excludes Zone B where parking for motorcycles are restricted to motorcycle bays only), except for in pay and display bays as long as they are parked at a right angle to the kerb and, if possible, at the end of the parking bay; you should use the dedicated motorcycle bays if available, rather than permit bays.

## Where can I load/unload if I receive deliveries?

Active loading and unloading can take place on all single and double yellow lines where there are no loading restrictions and also in parking bays. For any specific requests, such as removals, you can request a dispensation or a bay suspension. Please visit our website for more information [www.hackney.gov.uk/parking](http://www.hackney.gov.uk/parking)

## What if I have a Blue Badge or a Companion Badge?

Blue Badge holders are eligible to park in all shared use bays (pay and display and permit), pay and display only bays, single and double yellow lines (for a maximum of 3 hours). They can also use any disabled bay.

Companion Badge holders can park in the same bays as Blue Badge holders, but have the added advantage of being able to park in 'resident' and "permit" parking bays within their 'home' Parking Zone. If you currently hold a Companion Badge, this will need to be replaced with a Zone N Companion Badge. You will receive a separate letter about how you can change do this if you are a Companion Badge holder.

## What if I live on an estate?

There are a number of Council housing estates in the area which have their own parking regulations; these are independent of parking zones and would not be affected. You would be eligible to buy an on-street permit if your estate falls within a parking zone even if your estate has its own parking scheme.

## Allocation of parking bays

In a parking zone, parking bays are allocated for different uses including disabled motorists, local residents, businesses and local visitors, according to the Council's 'hierarchy of parking need' - please see the table below.

Type of parking bay	Permit, voucher or ticket required
General Permit parking bay	Resident or business parking permit
	Resident or business visitor voucher
Pay and Display parking bay	Pay and display ticket only
Shared Use parking bay	Resident or business parking permit
	Resident or business visitor voucher
	Pay & display ticket
Resident parking bay	Resident parking permit
Business parking bay	Business parking permit

## Do you consider road safety?

When developing the design of the PZ we have taken into account the amount of safe available parking spaces. In all other areas we will install either single or double yellow lines (no waiting at any time) to help prevent unsafe parking.

All design changes have been made in consultation with the Emergency Services (Ambulance, Fire Service and the Police) to ensure that there is sufficient road width to allow for the safe passage of emergency vehicles.

The proposed design also conforms to current PZ design standards recommended by the Department for Transport (DfT).

Most yellow lines in the preliminary parking layout have been placed for safety or access reasons and would be unlikely to change. Examples of these are:

- Junction protection – double yellow lines placed around the edges of road junctions to ensure visibility for drivers, cyclists, and pedestrians, and to allow space for wheelchair and pram users to safely cross
- Double yellow lines painted across access points to private property and housing estates, so that we can remove any obstructing vehicles
- Yellow lines painted along narrow roads to improve access or provide a passing point for vehicles

## **Are parking zones just a money-making scheme for the Council?**

No. By law revenue generated from PZs must be invested back into transport-related improvements such as highways, street scene, parking enforcement and safer car parks. It also contributes to the funding of the Freedom Pass scheme.

## **What if I live on a Car Free Development?**

A Car Free Development will be under a Section 106 agreement and will be included in your lease or deeds. If you live on a Car Free Development you may not be eligible to purchase a parking permit to park in the PZ. If you want to apply for a permit and are not sure if you live in one of these areas please call us on **020 8356 8877**.

## **What if I live on a private road?**

If you live on a private road which falls within the consultation area, your road will still be included in the consultation. Although your road will remain free of controls, you will still be able to purchase permits to park on surrounding roads which have parking controls.

## **How will you use my personal information?**

Hackney Council will use the information you have provided for the purpose of identifying support for parking controls in the area.

No personal information you have given us will be passed on to third parties for commercial purposes.

Our policy is that all information will be shared among officers and other agencies where the legal framework allows it, if this will help to improve the service you receive and to develop other services.

If you do not wish certain information about you to be exchanged within the Council, you can request that this does not happen.

All information provided will be handled under the Data Protection Act 1998 strict controls.

## **More information**



For more information about this consultation or the cost of permits and visitor vouchers please refer to our website [www.hackney.gov.uk/parking](http://www.hackney.gov.uk/parking) or call Hackney Parking Services on **020 8356 8877**.