

# Masterplan

The masterplan for Regan Way proposes extensive depaving and intensive planting along the length of the street.

A continuous biodiversity corridor would provide all the ecosystem services accompanying such scheme such as significant cooling during warm temperatures, and flood relief in periods of high rainfall while simultaneously delivering health and well-being benefits through air filtration and mental health gains.

Planting is organised to provide:

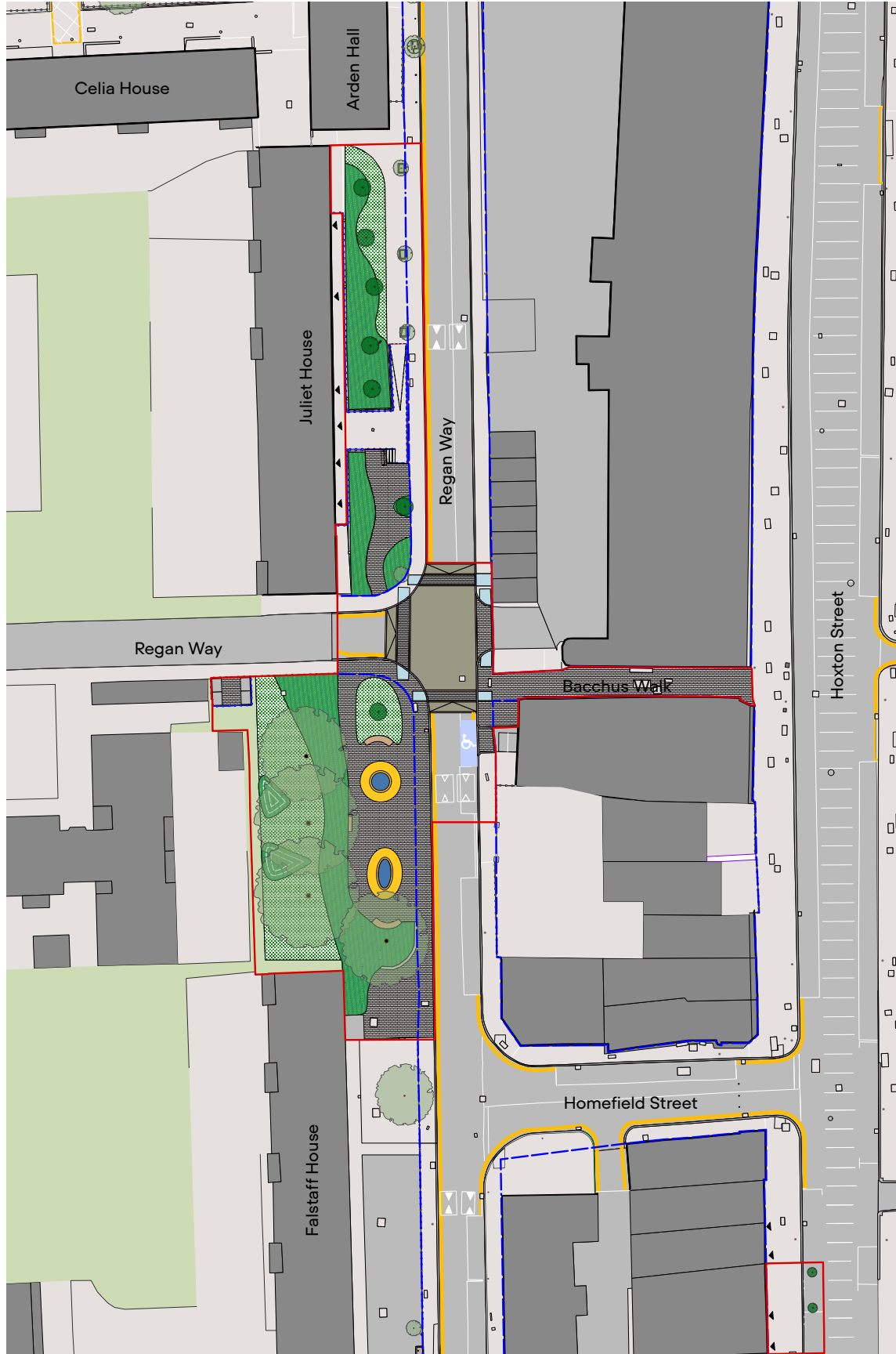
- Defensible space;
- Approx. 70m of play-on-the-way features leading to Regan Way; Community Hall and Purcell Gardens (Package 01);
- Ecology objects (i.e. log piles, bug hotels, bird / bat boxes);
- Existing trees are located within planter footprints;
- Residents' entrances are framed; and
- Opportunities for seating



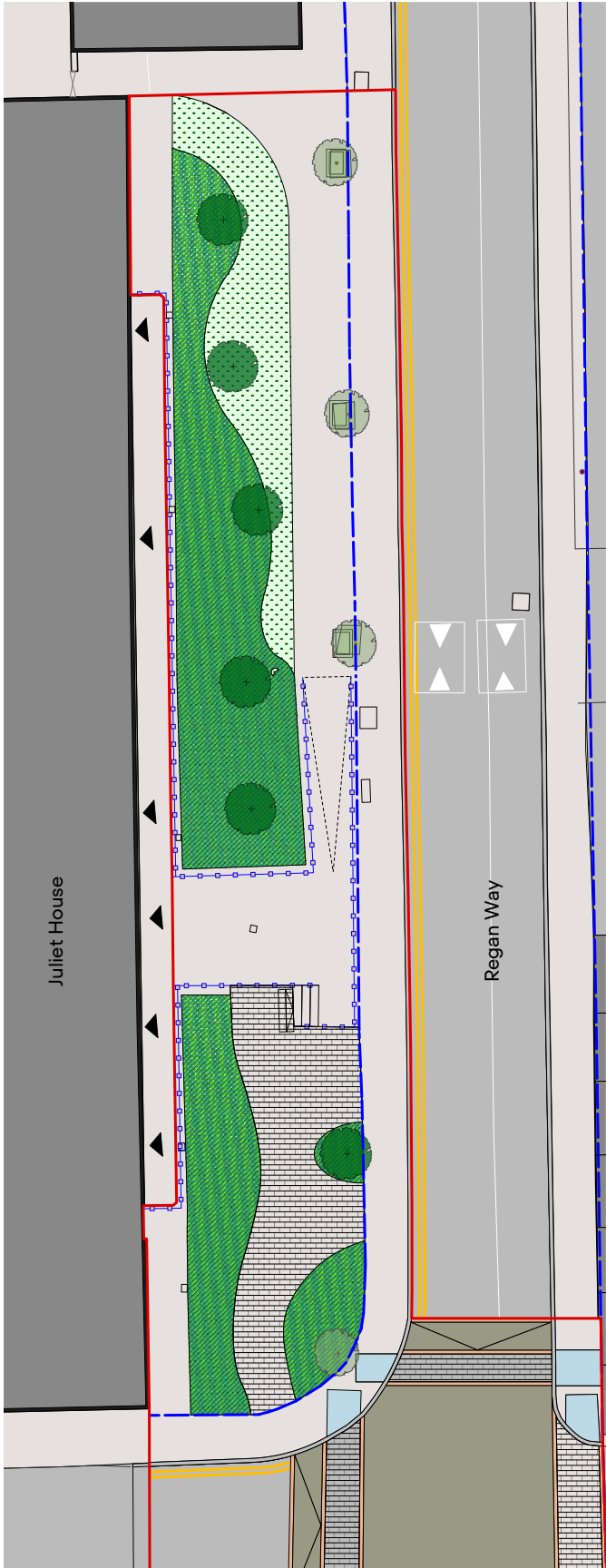
Precedent - Vauxhaul Green Link, RootAndErect

## Legend

- Package 3 Boundary
- - Highways Boundary



Regan Way Green Link Illustrative Masterplan showing maximum extent of depaving



Zoom in to northern portion

# Proposed Pocket Park

Located at the entrance to Arden Estate West, the junction of Bacchus Walk and Regan Way forms a key gateway to the estate and is a key moment along the strategic north - south green link. This is also the location of four mature lime trees and the large raised planter. The design aims to open up the corner, widens the narrow and in parts blocked foot ways, introduced improved green infrastructure and opportunities to sit, rest and spend time.

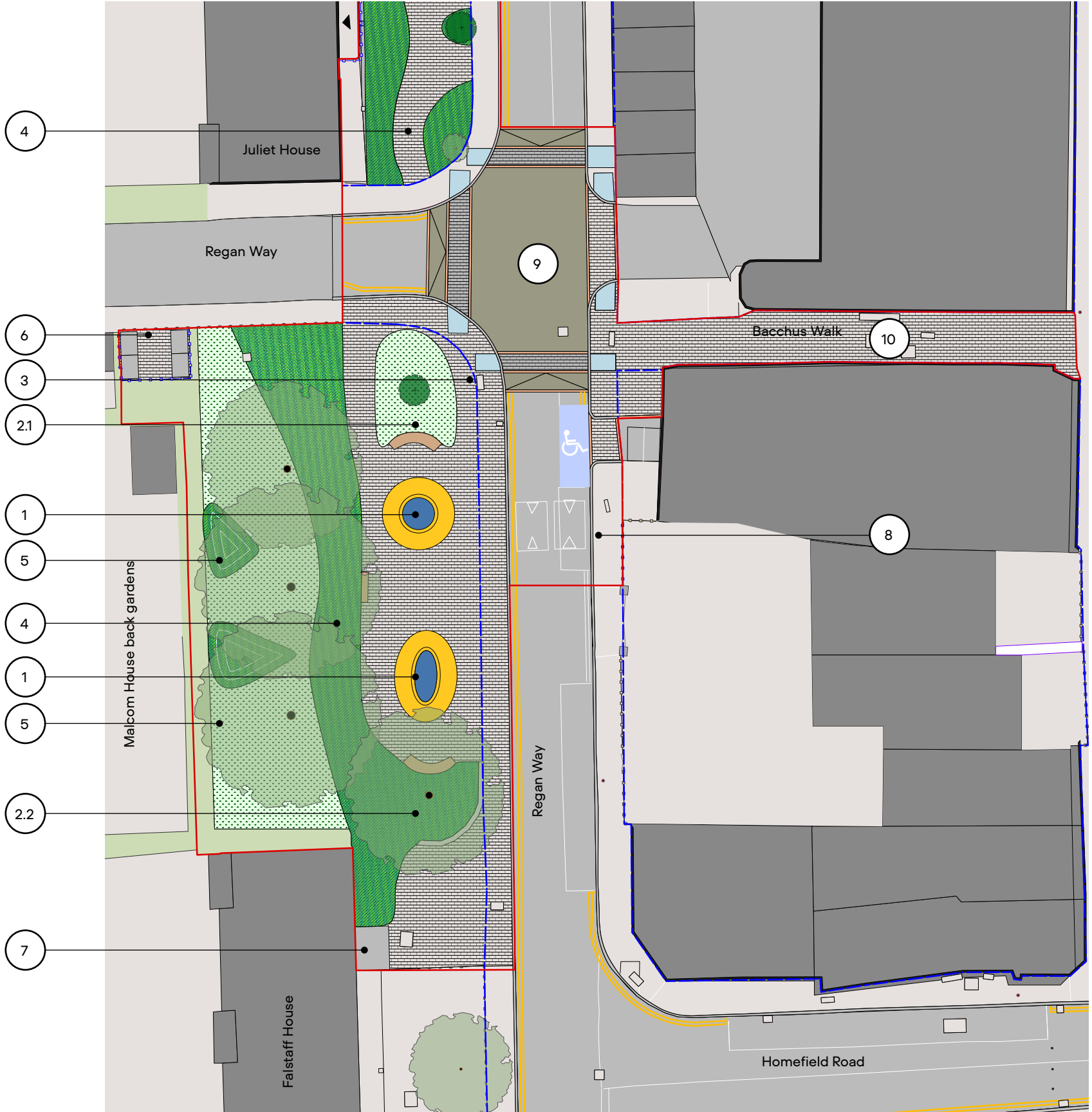
## Legend

1. Sculptural Features : Juliet's Balcony and Falstaff's Belly. Positioned centrally to anchor the space. (Opportunity to develop designs through workshops with the Ministry of Stories creative writing youth groups);
2. Planters framing the pocket park. The Southern planter (2.2) partially retains the existing wall;
3. Footway widening to open up the corner entrance to Regan Way from Bacchus Walk. Currently this axis is obstructed by a DDA parking bay and the former planter;
4. Edge planting;
5. Low habitat mounds using demolition waste, height approximately 300mm
6. Existing bins relocated from location in narrow passage between planter and fence
7. Existing bicycle hanger relocated
8. Blue Badge parking bay relocated to prevent obstruction of dropped kerb at threshold between Regan Way and Bacchus Walk
9. Raised table
10. Bacchus Walk resurfacing

■ Mown grass maintenance strip

## Legend

- Package 3 Boundary
- - Highways Boundary



Pocket Park General Arrangement Plan