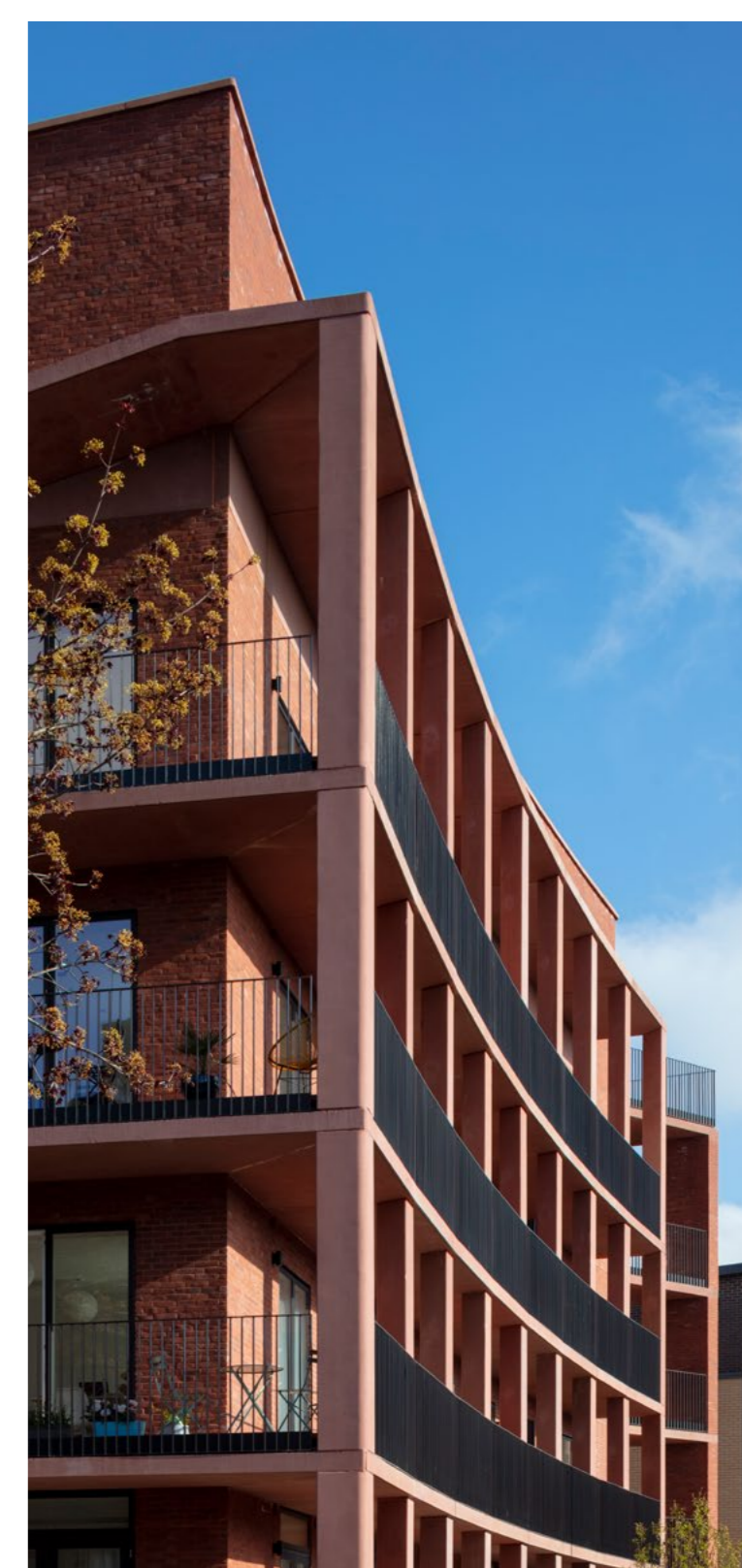
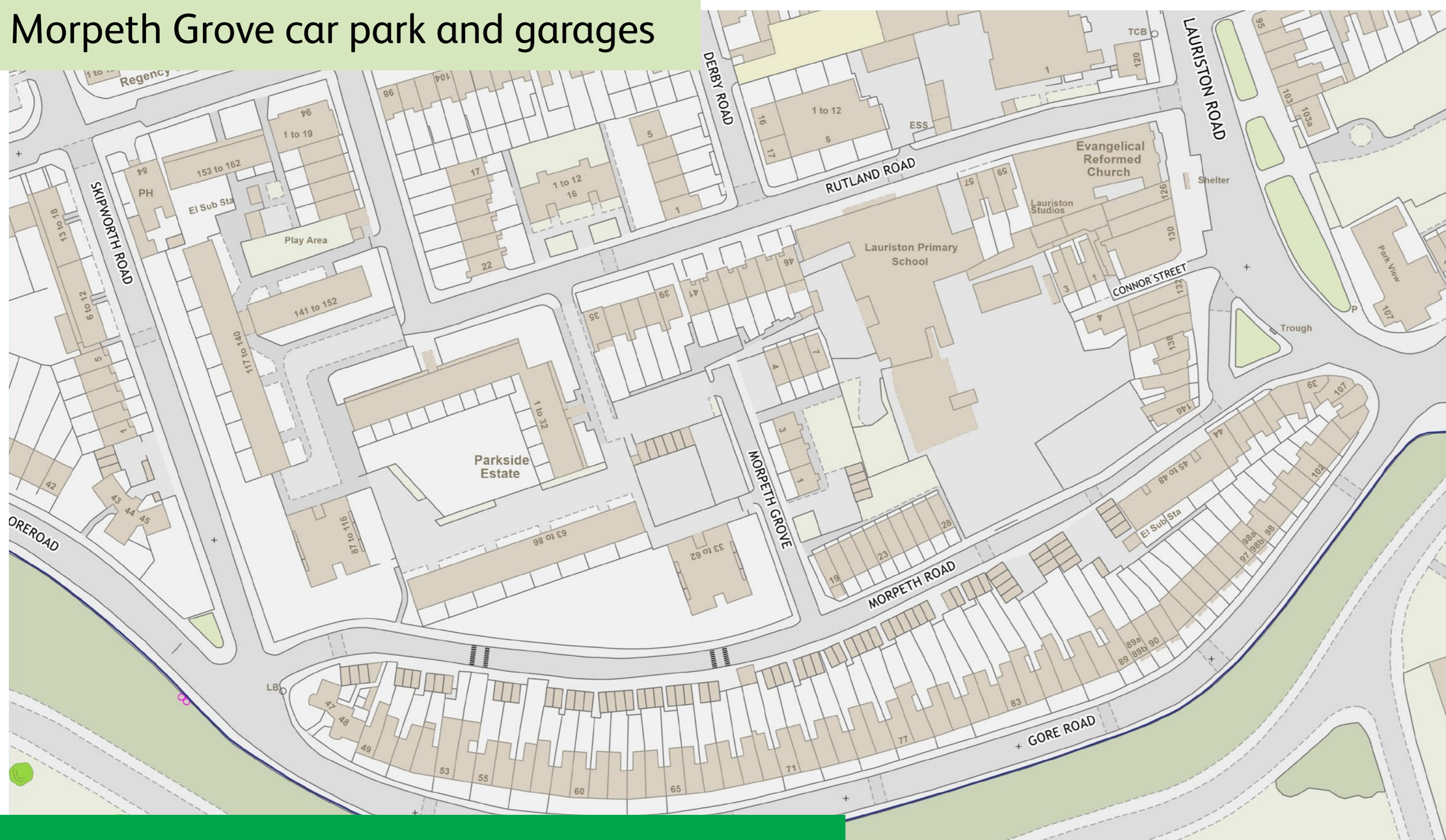


OPPORTUNITIES FOR NEW HOMES

Morpeth Grove car park and garages



New homes at Frampton Park

WHY THIS AREA?

The garages, car parking and sports court at Morpeth Grove is one of a number of locations in Hackney that have been identified as an option to accommodate new homes. This is because we think the garages and car park land has the potential to be better used to provide much needed new homes with improvements to the open spaces on Parkside estate, with the sports court reprovided.

TELL US...

★ Agree

★ Disagree

What are the problems?	What would you like to see?
Public areas	Improved public areas and greenery
Existing housing buildings	Improved visibility and safety
Communal spaces	Improved walking and cycling routes
Sports court	New homes on garage / car park area
Car park	New sports court or children's play space

If you have anything you would like to see in the area, or anything not raised on the table above, please use the post it notes provided and place them on the map!

#HACKNEYISBUILDING