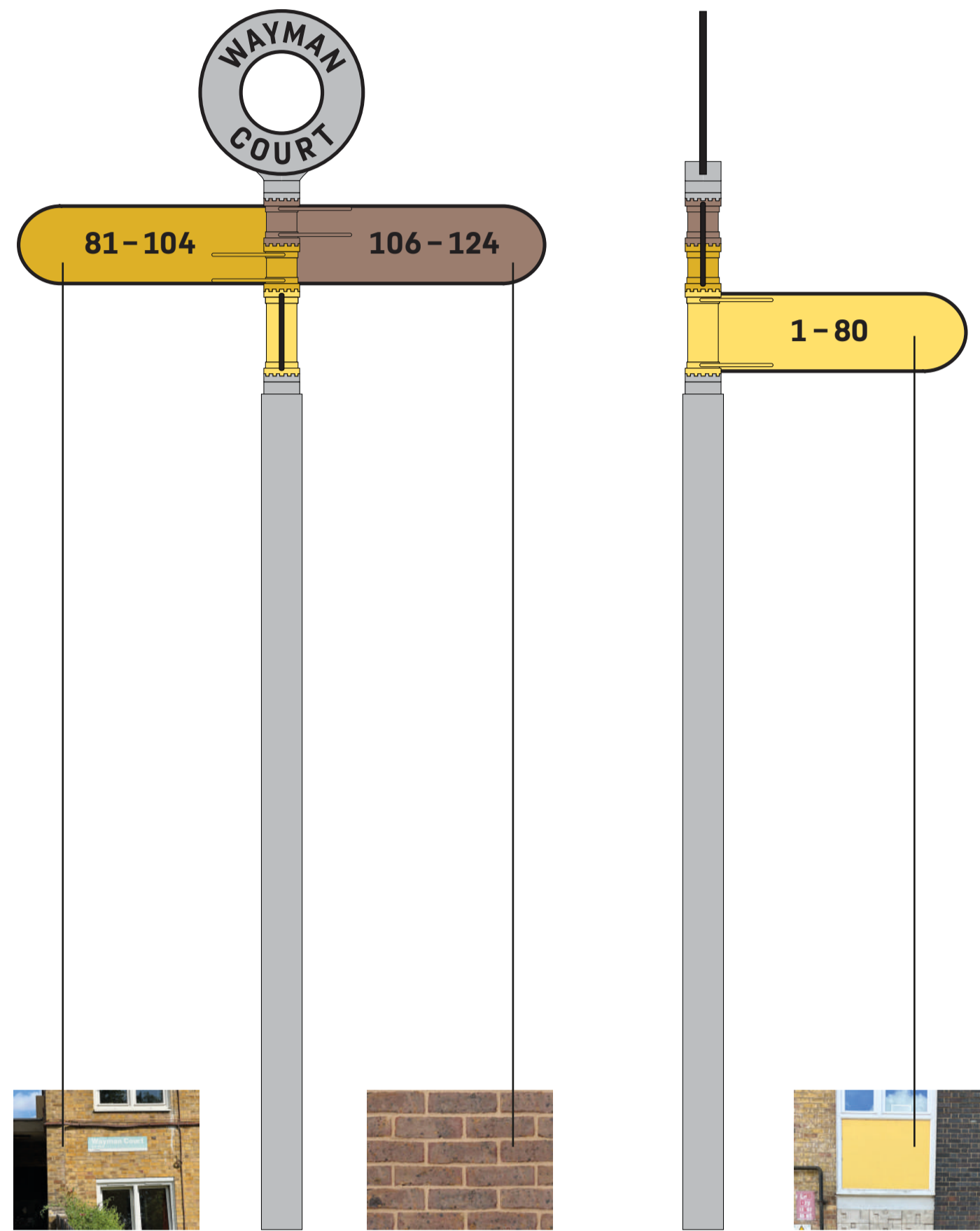


4 Wayfinding and Signage Proposal

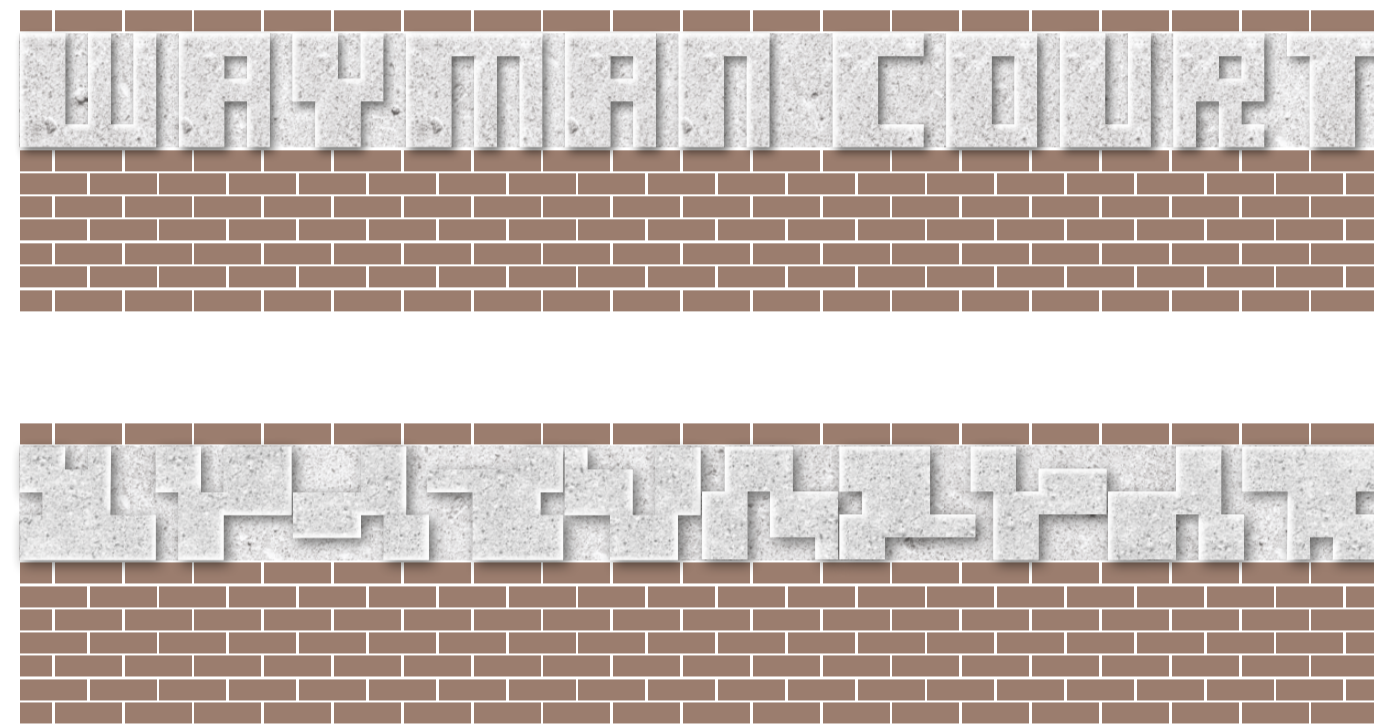
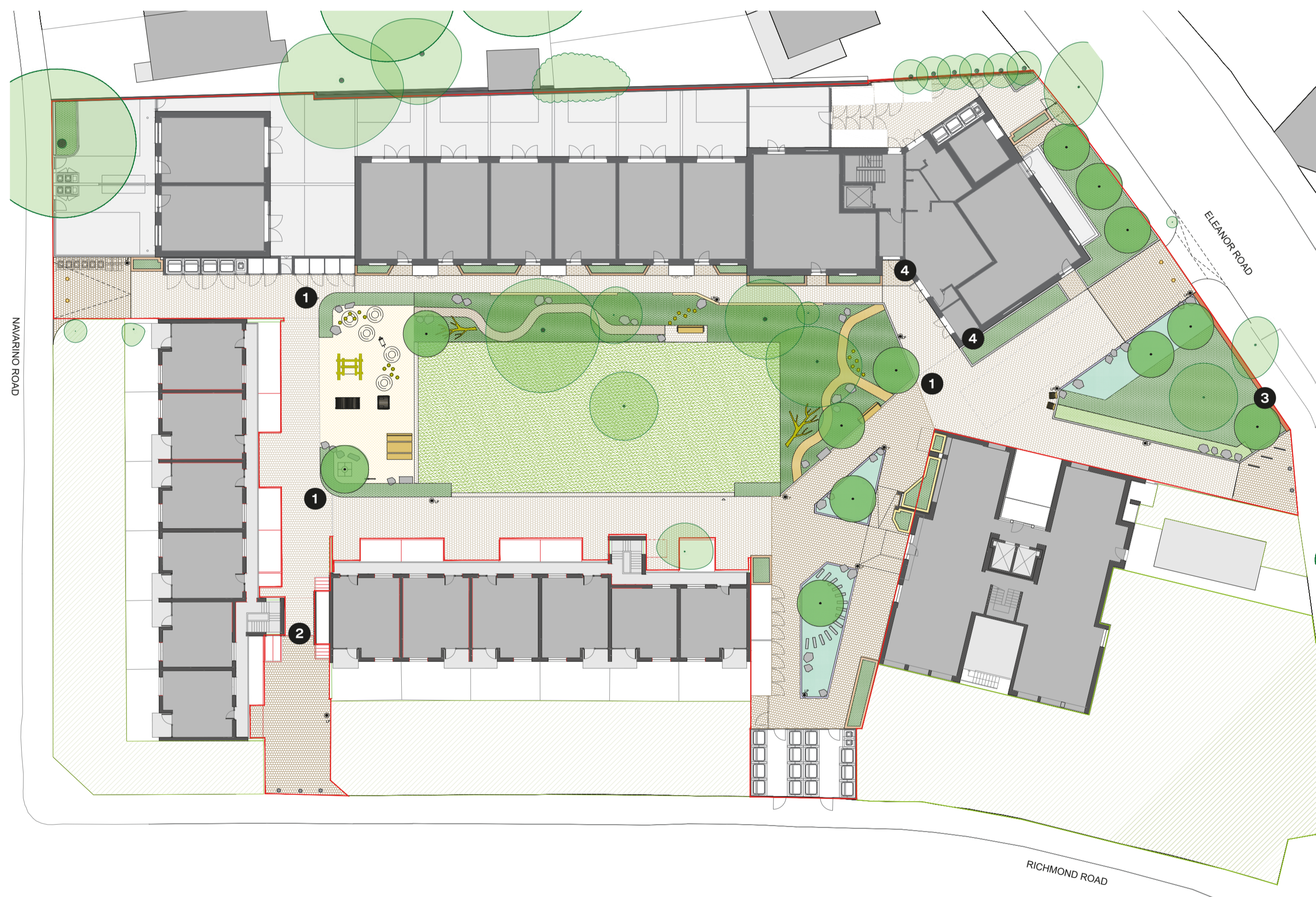


1 Finger posts

Three new fingerposts have been designed to help people find their way around Wayman Court. The fingers are colour coded to connect to each of the buildings – new and old. The finger posts are located near each of the three entrances to the estate, at key decision making points.

3 Placemaking sign

One beautiful characteristic of the original estates design is the bespoke concrete relief patterning on the tower. It feels like a cryptic code and at times resembles letter forms. We would like to continue this concrete patterning on a new wall at the Eleanor Road entrance to Wayman Court. Paying homage to the beauty of the existing estate. On the front the concrete will resemble the letters 'Wayman Court', on the back the pattern will be just like one on the tower.



2 Richmond Road entrance sign

It has been pointed out that the entrance to Wayman Court from Richmond Road requires additional signage to make it clear that you can enter the estate that way. We are proposing metal cut lettering fixed to the existing concrete structure. With the letters of Wayman raised to increase the size of the letting within the available space.

4 New building signage

Signage on the new building will be cast in coloured concrete to match the brick colour. The letters will be etched for durability and painted for legibility. Like in this reference image. The signs are located so as to easily navigate visitors to the entrance whilst working in harmony with the finger posts.

