



Existing area prone to fly-tipping

..... new design has removed obscure corners with poor overlooking which will reduce fly-tipping

Keep the existing bin store and chute for the maisonette block

..... this is not possible as the bins cannot be collected from here due to the bus stop location

We don't want any new bin store at the entrance to the estate off Richmond Road

..... we have removed the proposed store

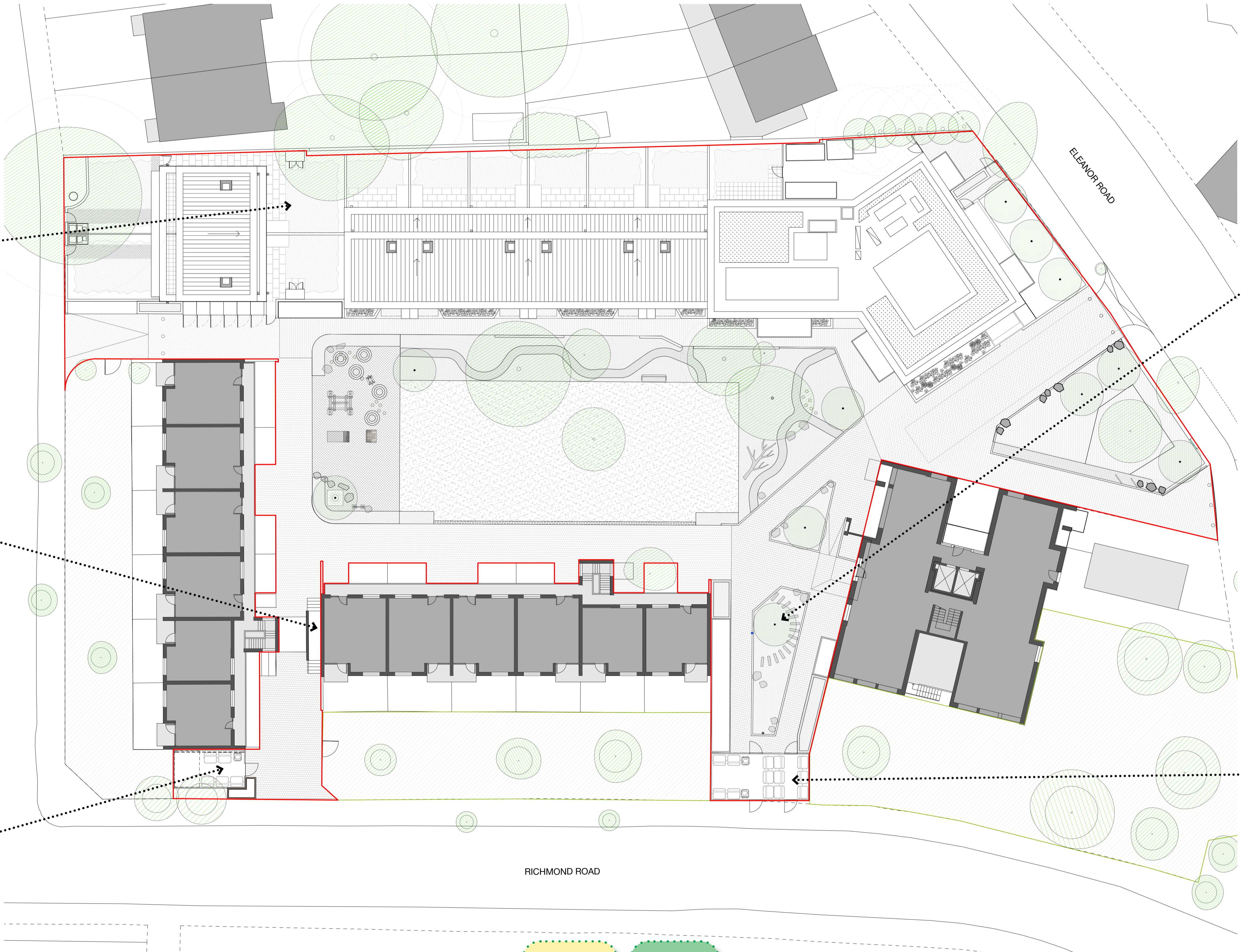


Existing area prone to fly-tipping

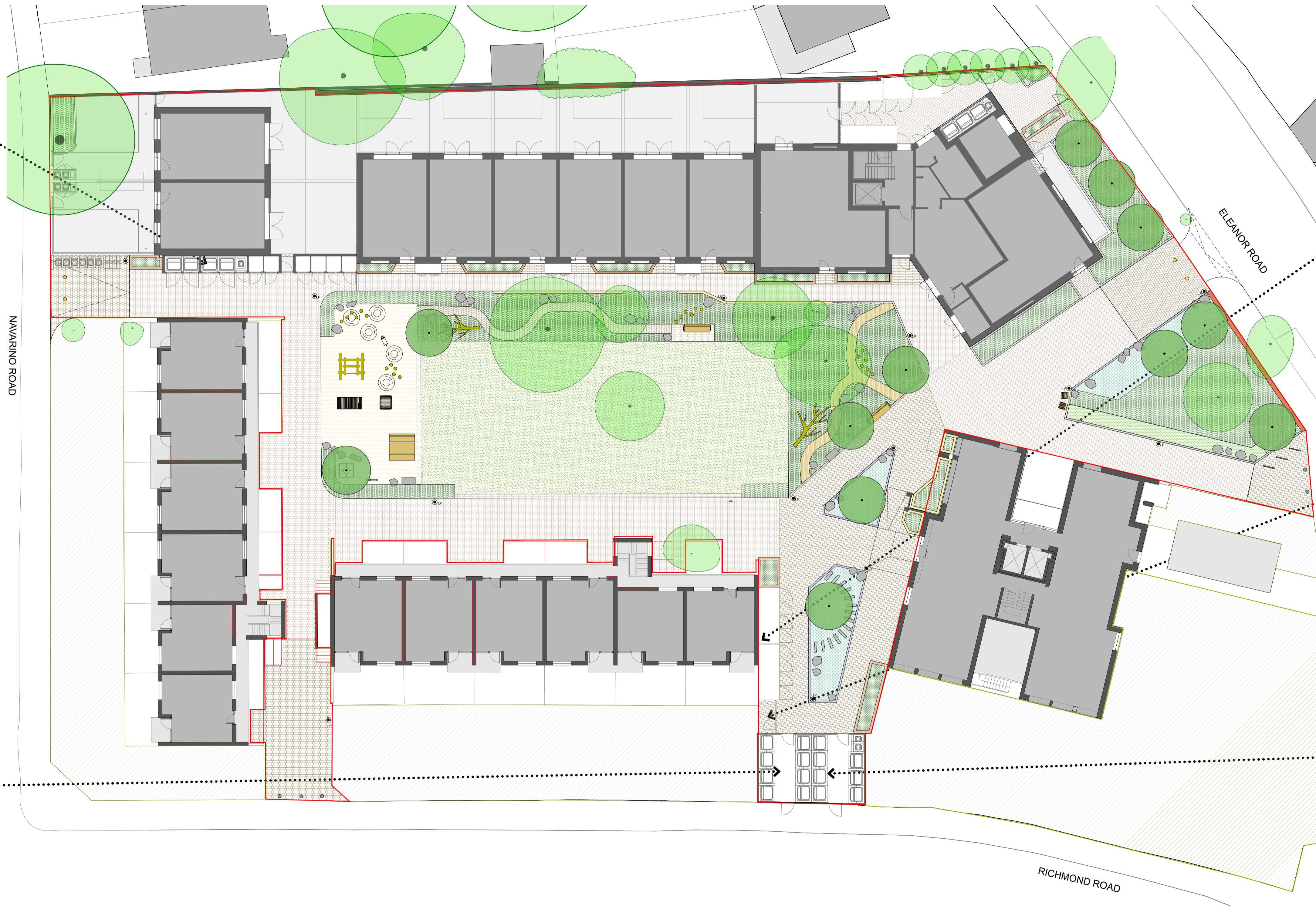
..... bins are now provided in a secure enclosure and access to the estate is for emergency vehicles only with bollards placed along Eleanor Road which will reduce fly-tipping

We need bulky waste storage and to stop fly tipping

.....The new waste and recycling provisions are designed to effectively deter fly-tipping. The Council's borough-wide strategy is to facilitate on-demand bulk item collection rather than a dedicated bulky waste areas.



You said We did



We are happy to walk to the existing bin store location between the tower and maisonette block

..... The walk distance from the maisonette block on Navarino Road is too long. So we have proposed 4 new bins on the gable end wall of the new town houses on Navarino Road for existing resident use.



Concerned about ASB and people breaking into the bin store either for searching for stuff or for rough sleeping

..... The new bin store will be enclosed and will be accessed via a fob. It will be designed so that it is ventilated but no one can get in - see example above of proposed system for the bin enclosure



We don't need that many bicycle parking spaces

..... we have reduced the number of spaces re-providing the current number - see above example of bicycle storage system proposed

We don't want the maintenance access gate to the garden off the estate entrance of Richmond Road

..... we have moved the access gate to a location more within the estate

We don't need any additional bins

..... we have to provide more bins to meet current Council policy

You said      We did

# 3 Updated Landscape Proposal

**RAILING TYPES:**

- R1 - Typical 900mm height railing to green space; bow-top
- R2 - Typical 500mm railing on top of 400mm wall; bow-top. Total 900mm height (to match R1). This type is required to work with existing levels
- R3 - Typical 1100mm height to play area; bow-top. Required to comply with play safety standards

**AMENITY SPACE ACCESS:**

- ▲ Access point to amenity green space (gated or open?)
- △ Gated access point to play area (gates required for play safety compliance)

**COLOUR PALETTE**



Above: potential colours for railings to green space



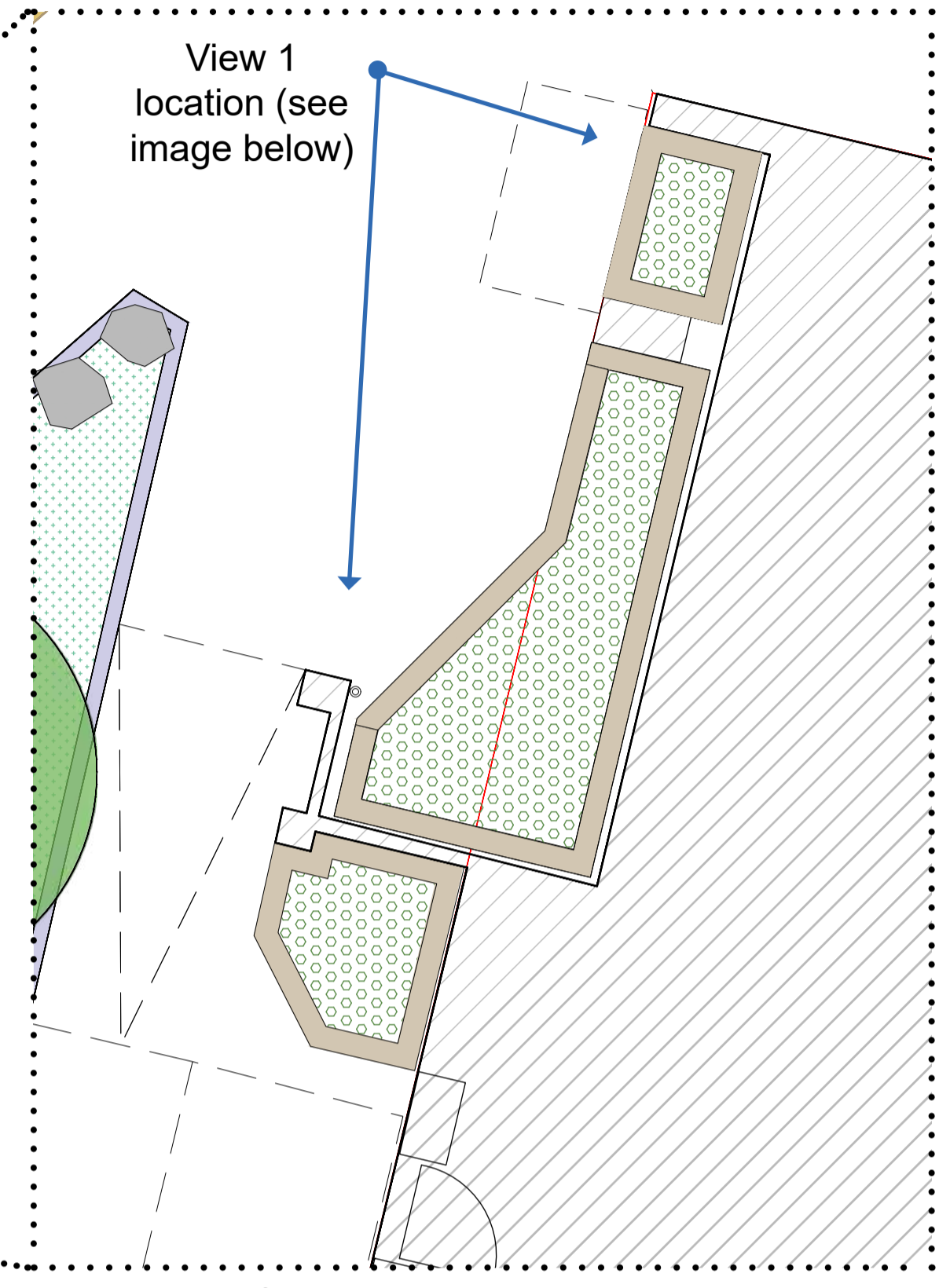
Above: other colours used for way-finding / signage, inspired by colours from the estate



Example of a blue-green, hoop-top railing  
Image: Alpharail



**TOWER PLANTER**



Extract plan of potential planter adjacent to the tower, set within the existing overhang / hidden corner area

**SEATING TYPES**



1 Inclusion bench-table-bench combination  
Image: Burri Products



2 Bench with back rest and arm rests  
Image: Burri Products



3 Single seat with back rest and arm rest x2 (arm rests not shown)  
Image: Burri Products



View 1: illustration of potential tower planter. The existing wall contains a vertical gas pipe that cannot be moved