



# Brunswick Place Gate

## Public Realm Improvement Scheme

Public consultation

July 2018

have  say

 **Hackney**

## Help us to improve Brunswick Place

We are seeking your views on this proposed scheme to create a new high quality public space on Brunswick Place.

### Why

This is part of a new approach to making the streets of Shoreditch and Hoxton work better for people - a long term vision to create streets that are safe and easy to walk or cycle on, reducing vehicle dependence and improving air quality.

The Council's Transport Strategy recognises that roads and streets in our neighbourhoods are not just places to park vehicles or drive, walk and cycle on; they make up the largest element of the public realm of the city and are the places where we socialise and live our lives. We would like to transform Hackney's neighbourhoods into the most attractive and liveable neighbourhoods in London. This aspiration can in part be achieved by reducing the dominance of the private motor vehicle.

Doing this will also help to improve air quality in the local area, reduce traffic casualties and make our neighbourhoods more pleasant places to walk, play and cycle in. We recognise the detrimental impact of air pollution in this part of Hackney. Air pollution is responsible for the death of approximately 10,000 Londoners each year and causes alarming rates of asthma and other respiratory illnesses in children.

Funding has also become available for this particular scheme from a nearby completed development to improve this location so that it feels more vital, safe and active.

## Overview

The approach we are taking includes a series of schemes intended to improve walking and cycling conditions within Shoreditch and this scheme is one of several coming forward that will contribute to making Shoreditch and Hoxton a more liveable and healthier place.

These schemes will:

- make it easier and safer to walk and cycle by removing through traffic in the area
- reduce levels of pollution
- improve the character of the area for all residents, businesses and visitors

## What we intend to do

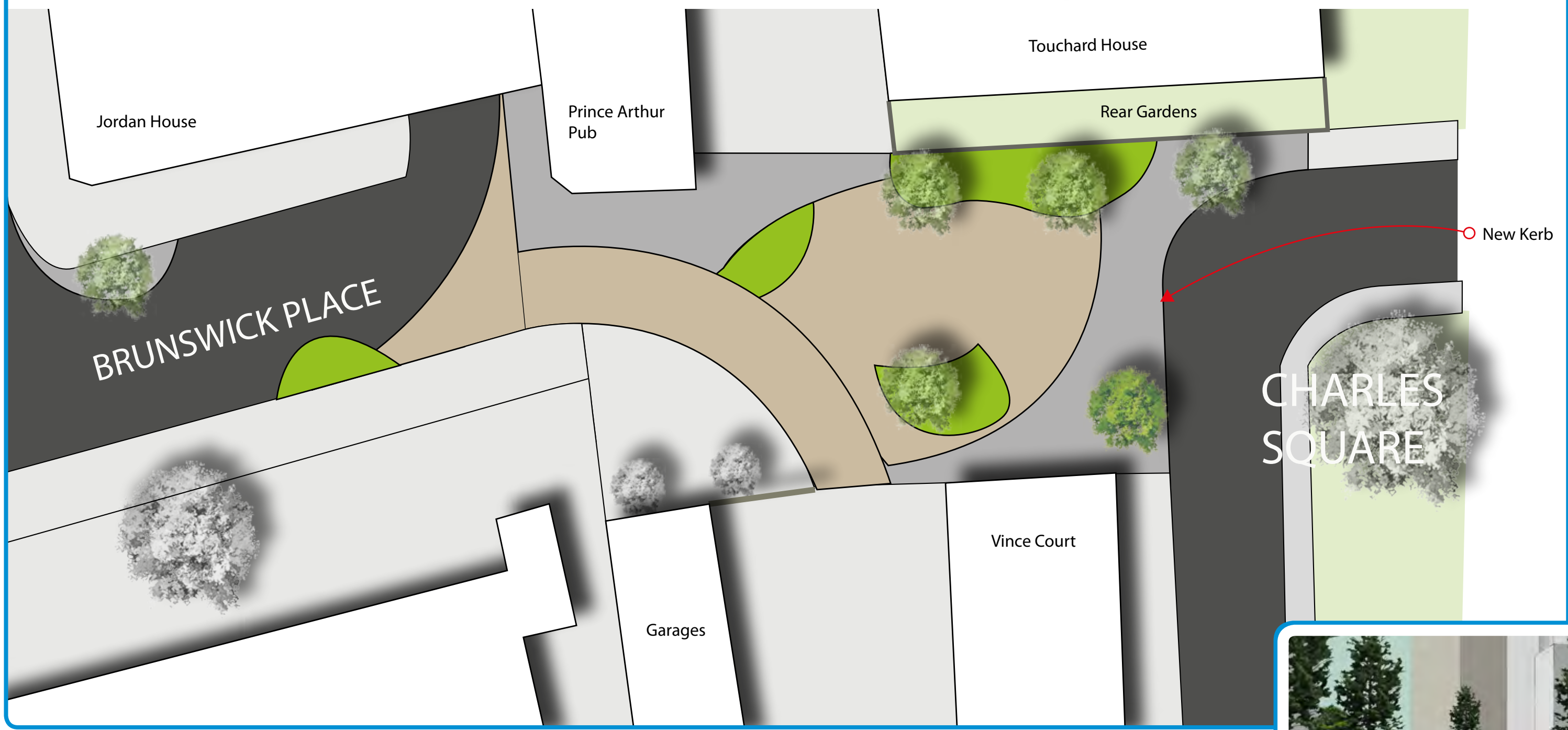
We are proposing to completely close this section of Brunswick Place to through traffic, creating a distinct high quality pedestrian space with trees, planting and some seating. Bicycles would still be allowed to cross the space after the works are completed. Emergency access would still be maintained.

We intend to remove the existing gate and pave over the road areas around it. This should improve the way the space looks and allow the creation of a larger landscaped area than would otherwise be possible. We believe that making the environment more attractive encourages more walking and this scheme could play a big part in achieving that.

The scheme could include some areas of low level planting in order to make it feel more relaxed as well as friendlier. Planted areas would be designed to soak up rainwater and

# Brunswick Place Gate

-  New Concrete Paving
-  New Concrete cobbles
-  Low Level Planting
-  New Tree Planting



groundwater (Sustainable Urban Drainage). New trees could also contribute to a greener, softer character to the new space. Please refer to pp. 3-4 to see a plan of the proposals.

## How to have your say

Your views are a very important part of our decision making process. You can have your say by returning the feedback form provided using the **Freepost** envelope enclosed, or online by visiting [consultation.hackney.gov.uk](http://consultation.hackney.gov.uk), both by **Sunday 29 July 2018**.

## What happens next?

Your views will be taken into account as part of the detailed design process. To keep up to date with this and other plans, please visit [www.consultation.hackney.gov.uk](http://www.consultation.hackney.gov.uk)

## Permanent works

We expect construction works to commence around September 2018 with completion in 16 weeks.

## Temporary works

Pedestrian access will be maintained at all times and businesses can continue to operate as normal.

Further information regarding the works will be sent out closer to the time.

## Information



For further information on these proposals, please contact us through the Hackney Service Centre by calling **020 8356 2897** or by emailing [streetscene@hackney.gov.uk](mailto:streetscene@hackney.gov.uk)

## FAQ

### Q. Has anti-social behaviour been considered in the design of this scheme?

A. Yes, by making the environment more welcoming and pleasant we hope that more people will walk through the space. Streets that have more people in them tend to attract less anti-social behaviour. Some seating is important, as it will allow people, especially older people, the opportunity to sit and rest. However, the seating will be spread apart to discourage large numbers of people from congregating.

### Q. Are we going to address existing concerns about motorbikes using this as a cut through from Charles Square to Brunswick Place?

A. Yes. We will introduce a kerb to the eastern edge of the scheme. We will also introduce signage across the scheme to make clear the illegality of using this space as a cut through for motorbikes.

### Q. Will emergency access be possible across the new space?

A. Informal emergency access will be facilitated by a clear area across the new scheme capable of being used by emergency vehicles.

### Q. Do all businesses and garages have access still?

A. Existing access will be maintained.

If you would like to find out what this document says please tick the appropriate box, put your name, address and phone number at the bottom of this page and return it to the address below.

**Bengali**

এই নথিতে কি সেখা অংশে যে সম্পর্ক যদি আপনি জানতে চান তাহলে অনুগ্রহ করে উপযুক্ত বাক্সে চিহ্ন দিন, এই পত্রের নীচে আপনার নাম, ঠিকানা ও ফোন নম্বর লিখুন এবং এটি নিম্নের ঠিকানায় ফেরত পঠিন।

**Somali**

Haddii aad jeclaan lahayd in aad ogaato waxa dokumeentigani sheegayo fadlan calaamadi godka ku haboon, ku qor magacaaga, cinwaanka iyo telefoon lambarkaaga boggan dhankiisa hoose ka dibna ku celi cinwaanka hoose.

**French**

Si vous désirez connaître le contenu de ce document, veuillez cocher la case appropriée et indiquer votre nom, adresse et numéro de téléphone au bas de cette page et la renvoyer à l'adresse indiquée ci-dessous.

**Spanish**

Si desea saber de lo que trata este documento, marque la casilla correspondiente, escriba su nombre, dirección y número de teléfono al final de esta página y envíela a la siguiente dirección.

**Kurdish**

Ger hûn dixwazin bizanibin ku ev dokument çi dibêje, ji kerema xwe qutika minasib îşaret bikin, nav, navnîşan û hejmara telefona xwe li jêrê rûpel binivîsin û wê ji navnîşana jêrîn re bişînin.

**Turkish**

Bu dokümanda ne anlatıldığını öğrenmek istiyorsanız, lütfen uygun kutuyu işaretleyerek, adınızı, adresinizi ve telefon numaranızı bu sayfanın alt kısmına yazıp, aşağıdaki adrese gönderin

**Polish**

Jeśli chcesz dowiedzieć się, jaka jest treść tego dokumentu, zaznacz odpowiednie pole, wpisz swoje nazwisko, adres i nr telefonu w dolnej części niniejszej strony i przeslij na poniższy adres.

**Vietnamese**

Nếu bạn muốn biết tài liệu này nói gì hãy đánh dấu vào hộp thích hợp, điền tên, địa chỉ và số điện thoại của bạn vào cuối trang này và gửi lại theo địa chỉ dưới đây.

**Urdu**

گر آپ یہ جاننا چاہتے ہیں کہ دستاویز میں کیا لکھا ہے تو زورہ کریم مناسبت باکس میں صحیح کا نشان لگائیے اور اپنا نام، پتہ اور فون نمبر اس صفحہ کے نیچے لکھتے اور اسے نیچے دیئے گئے پتہ پر واپس بھیج دیجئے۔

**Chinese**

如果你想知道這份文件的詳細內容，請在方格內打鉤，在本頁下面寫下你的名字、地址和電話號碼並寄到下面的地址。

If you would like this document in any of the following formats or in another language not listed above, please complete and send the form to the address below.

In large print

In Braille

On Disk

On audio tape

In another language, please state:

Name

Address

Tel

**Return to: FREEPOST STREETSCENE**