



New Inn Broadway

Public Realm Improvement Scheme

Public consultation

March 2019



Help us improve New Inn Broadway

We are seeking your views on a proposed scheme to transform New Inn Broadway into a high quality street.

Why

This is part of a new approach as to how we want the streets of Shoreditch and Hoxton to work – a long term vision for this thriving and dynamic area of London is to create streets that are safe and easy to walk or cycle on, reducing vehicle dependence and improving air quality.

The Council's Transport Strategy recognises that roads and streets in our neighbourhoods are not just places to park vehicles or drive, walk and cycle on; they make up the largest element of the public realm of the city and are the places where we socialise and live our lives. We would like to transform Hackney's neighbourhoods into the most attractive and liveable neighbourhoods in London. This aspiration can only be achieved by reducing the dominance of the private vehicle primarily through managing on-street parking and reducing traffic flows.

We recognise the detrimental impact of air pollution in the City Fringe. Air pollution is responsible for the early death of approximately 10,000 Londoners each year and causes alarming rates of asthma and other respiratory illnesses in children. This has led to us creating a Low Emission Neighbourhood (LEN) in the City Fringe, made possible through funding partly from the Mayor's Air Quality Fund. This scheme is part of a package of measures focussed on reducing emissions and promoting sustainable travel to improve local air quality.

Overview

The approach we are taking includes a series of schemes intended to improve walking and cycling conditions within Shoreditch and Hoxton. Works to improve the environment for pedestrians have already been completed at Garden Walk and Bowling Green Walk, while works to enhance the public realm and make it easier, safer and more pleasant to

walk and cycle are currently being implemented at Brunswick Place Gate and New Inn Yard.

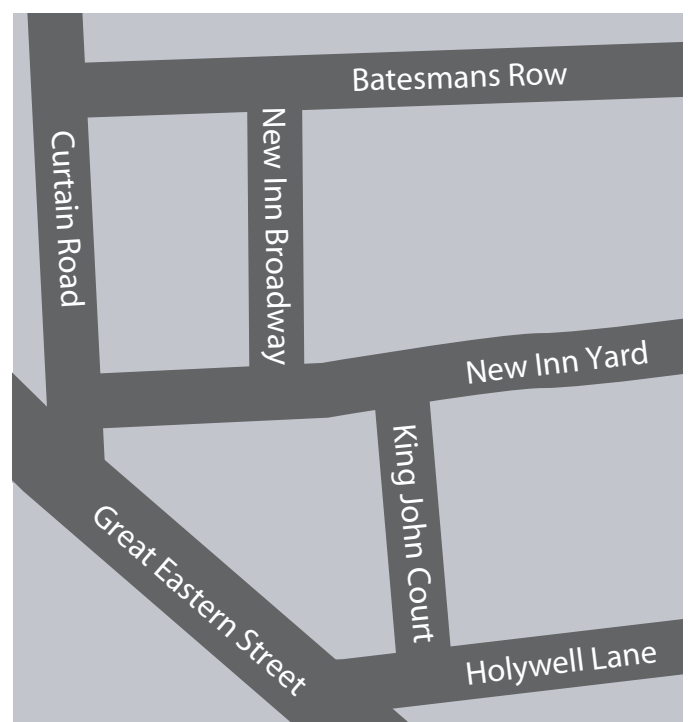
New Inn Broadway is one of the schemes that will contribute to making Shoreditch and Hoxton a more liveable and healthy place.

These schemes aim to:

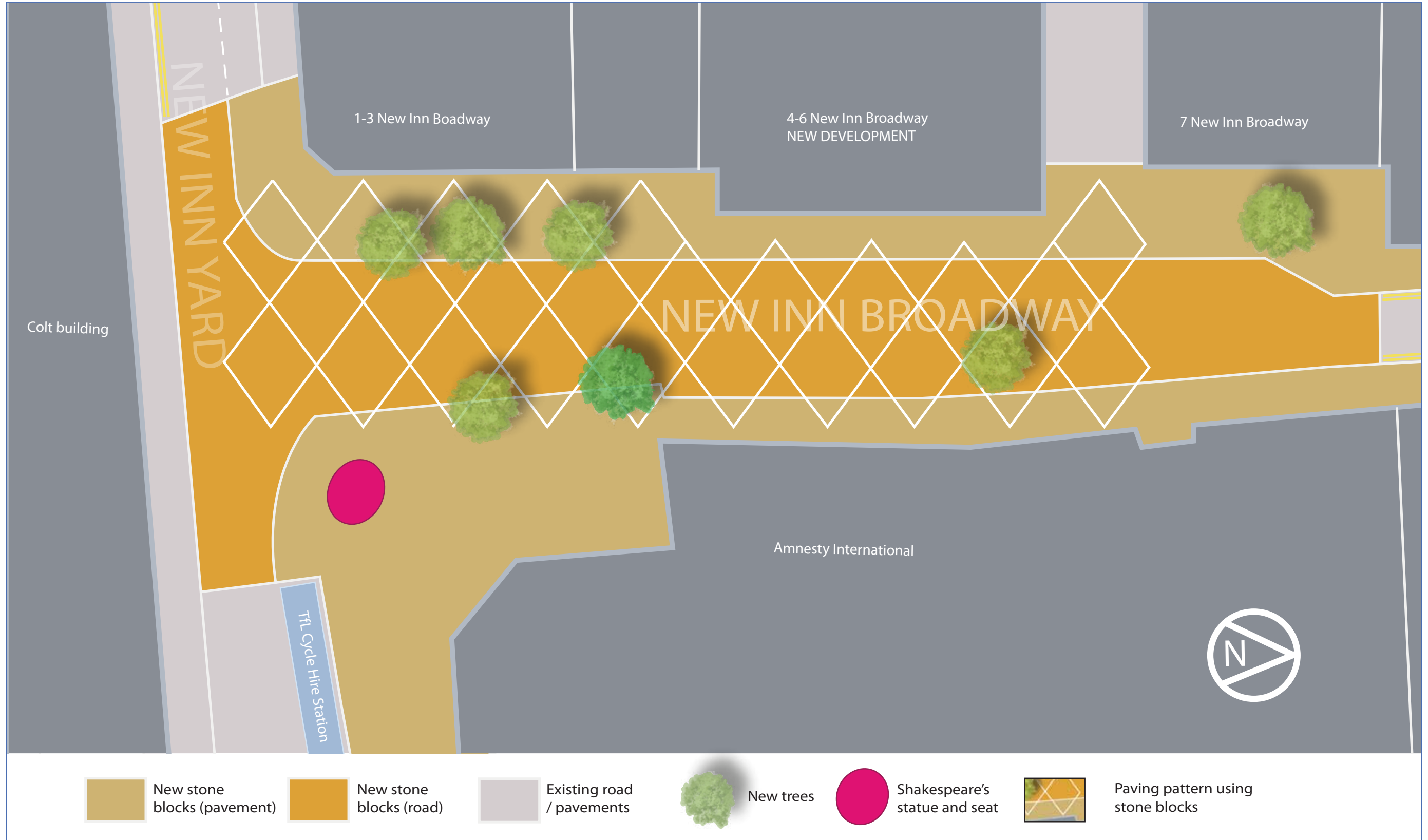
- reduce levels of pollution
- make it easier and safer to walk and cycle
- improve the character of the area for all residents and businesses

What we intend to do

Funding has become available through contributions from the new development at 4-6 New Inn Broadway to improve this location so that it's safe, activated and has a strong identity.



As a result of this funding we are proposing to completely transform this section of New Inn Broadway, creating a distinct and high quality street with trees, planting and seating. Bicycles and vehicles will still be allowed to use the street after the works are completed.



We intend to enhance the public realm of New Inn Broadway by using a patterned paving design across both the road and pavement areas, with a traditional raised kerb arrangement. This should improve the way this space looks, making the public realm far more pedestrian friendly. We believe that making the environment more attractive encourages more walking and this scheme could play a part in achieving that.

Given there is space for their root systems, the scheme will include some new trees that will contribute to a relaxing environment and a greener, friendlier character to the space. As part of the development on 4-6 New Inn Broadway, there is also a proposal to install a newly commissioned statue of Shakespeare on the corner of New Inn Broadway and New Inn Yard, which will give a nod to the location's historic past as home to the playwright's first theatre.

We are also intending to install some seating opposite the new development, in addition to wayfinding signage and cycle stands.

Creating a high quality space and planting trees and greenery will result in the loss of all car parking spaces in New Inn Broadway.

For details of the proposal please refer to the drawing on pages 3 and 4.

How to have your say

Your views are very important in the Council's decision-making process. Please read through the information in this document and respond either online at consultation.hackney.gov.uk or return the questionnaire in the **FREEPOST** envelope provided by **Sunday 28 April 2019**.

What happens next?

Your views will be taken into account as part of the detailed design process. To keep up to date with this and other plans, please visit: www.hackney.gov.uk/street-consultations

Permanent works

If the scheme goes ahead, following consultation, we expect construction works to start around August 2019 with completion in 20 weeks.

Temporary works

Pedestrian access will be maintained at all times and businesses will continue to operate as normal. Further information regarding the works will be sent out close to the time.

Information

 For further information on these proposals, please contact us at the Hackney Service Centre by calling **020 8356 2897** or by emailing streetscene.consultations@hackney.gov.uk

FAQ

Q. Has anti-social behaviour been considered in the design of this scheme?

A. Yes. We will ensure that trees do not create dark spots by adjusting lighting levels if needed.

Q. Is this a shared space scheme?

A. No. A key feature of traditional road layouts is of using raised kerbs to delineate between road and pavement areas. This is incorporated into the design of this scheme.

Q. Will deliveries to businesses or residential properties still be possible?

A. The road will still function as it currently does in terms of vehicular access.

If you would like to find out what this document says please tick the appropriate box, put your name, address and phone number at the bottom of this page and return it to the address below.

Bengali

এই দলিলে কি লেখা আছে সে সম্পর্কে যদি আপনি জানতে চান তাহলে অনুগ্রহ করে উপযুক্ত বাক্সে টিক দিন, এই পাতার নীচে আপনার নাম, ঠিকানা ও ফোন নম্বর লিখুন এবং এটি নীচের ঠিকানায় ফেরত পাঠান।

Somali

Haddii aad jeclaan lahayd in aad ogaato waxa dokumeentigani sheegayo fadlan calaamadi godka ku haboon, ku qor magacaaga, cinwaanka iyo telefoon lambarkaaga boggan dhankiisa hoose ka dibna ku celi cinwaanka hoose.

French

Si vous désirez connaître le contenu de ce document, veuillez cocher la case appropriée et indiquer votre nom, adresse et numéro de téléphone au bas de cette page et la renvoyer à l'adresse indiquée ci-dessous.

Spanish

Si desea saber de lo que trata este documento, marque la casilla correspondiente, escriba su nombre, dirección y número de teléfono al final de esta página y envíela a la siguiente dirección.

Kurdish

Ger hun dixwazin bizanibin ku ev dokument çi dibêje, ji kerema xwe qutîka minasib îşaret bikin, nav, navnîşan û hejmara telefona xwe li jêrê rûpel binivîsin û wê ji navnîşana jêrîn re bişînin.

Turkish

Bu dökümanda ne anlatıldığını öğrenmek istiyorsanız, lütfen uygun kutuyu işaretleyerek, adınızı, adresinizi ve telefon numaranızı bu sayfanın alt kısmına yazıp, aşağıdaki adrese gönderin.

Polish

Jeśli chcesz dowiedzieć się, jaka jest treść tego dokumentu, zaznacz odpowiednie pole, wpisz swoje nazwisko, adres i nr telefonu w dolnej części niniejszej strony i przeslij na poniższy adres.

Vietnamese

Nếu bạn muốn biết tài liệu này nói gì hãy đánh dấu vào hộp thích hợp, điền tên, địa chỉ và số điện thoại của bạn vào cuối trang này và gửi lại theo địa chỉ dưới đây.

Urdu

اگر آپ یہ جاننا چاہتے ہیں کہ دستاویز میں کیا لکھا ہے تو ازراہ کرم مناسب باکس میں صحیح کا نشان لگائیے اور اپنا نام، پتہ اور فون نمبر اس صفحہ کے نیچے لکھئے اور اسے نیچے دیئے گئے پتہ پر واپس بھیج دیجئے۔

Chinese

如果你想知道這分文件的詳細內容，請在方框內打鉤，在本頁下面寫下你的名字、地址和電話號碼並寄到下面的地址。

If you would like this document in any of the following formats or in another language not listed above, please complete and send the form to the address below.

In large print

In Braille

On Disk

On audio tape

In another language, please state:

Name:

Address:

Tel:

Return to: FREEPOST STREETSCENE