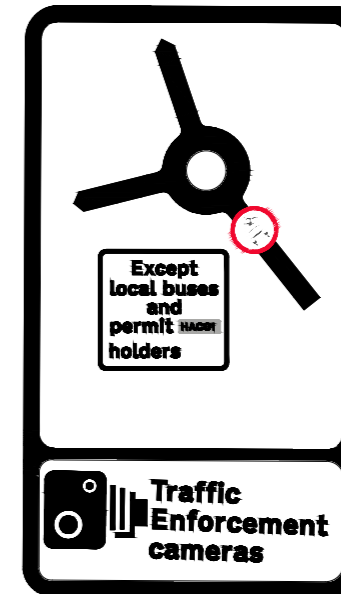
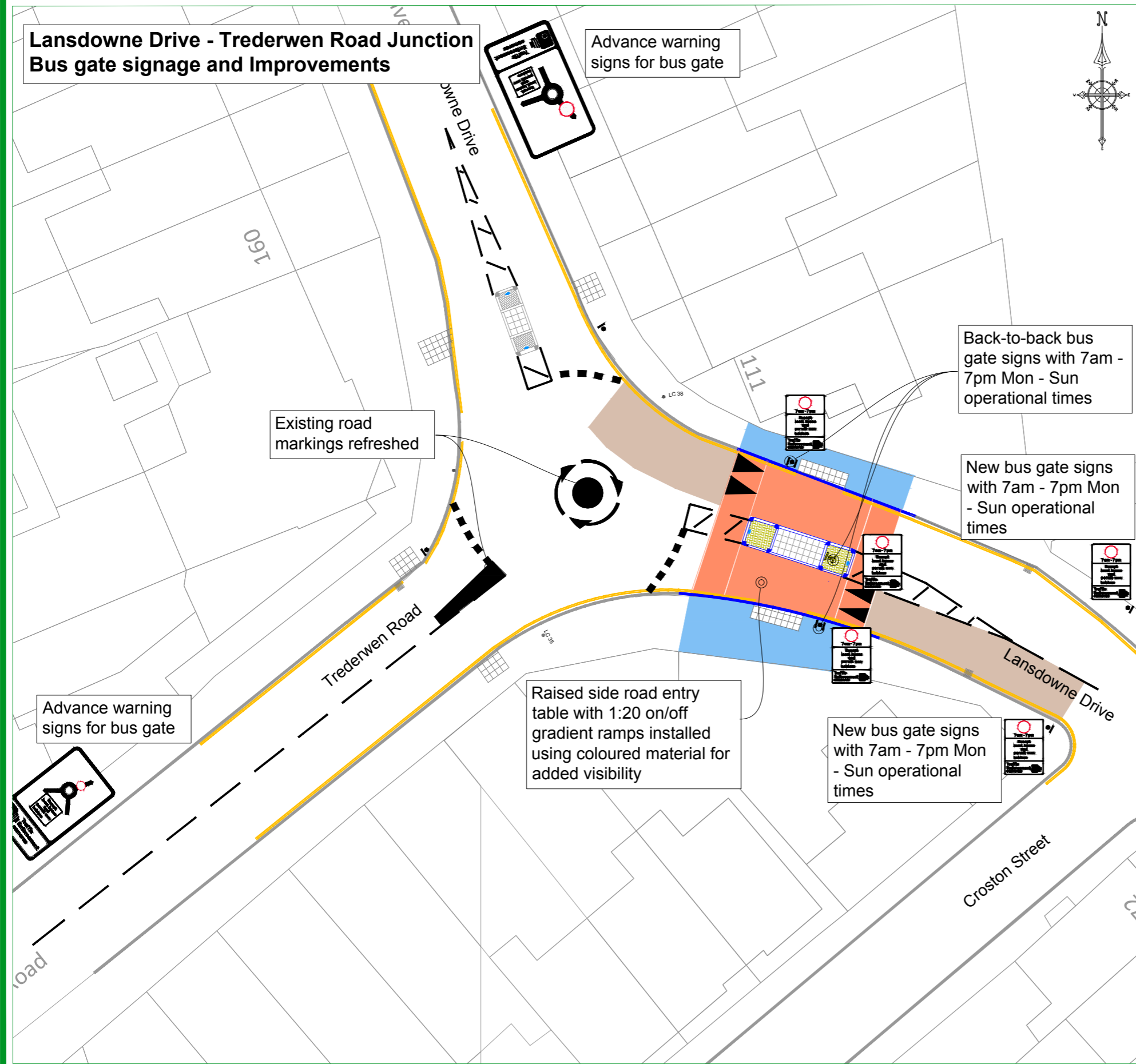
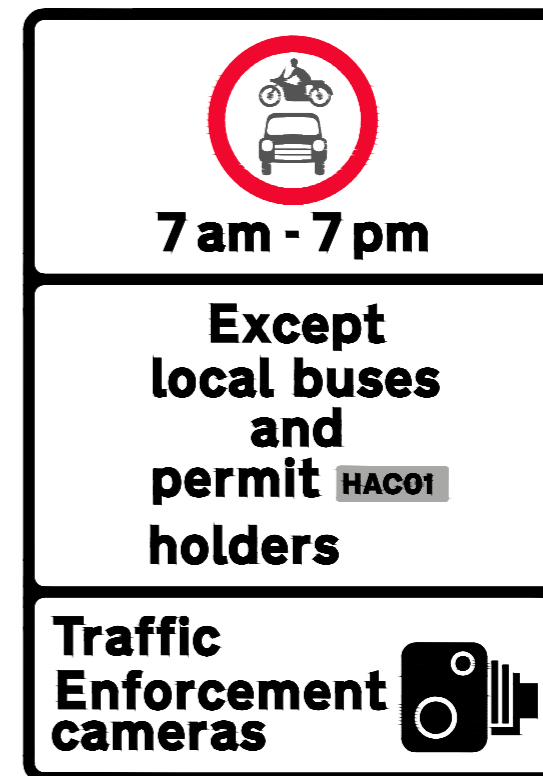


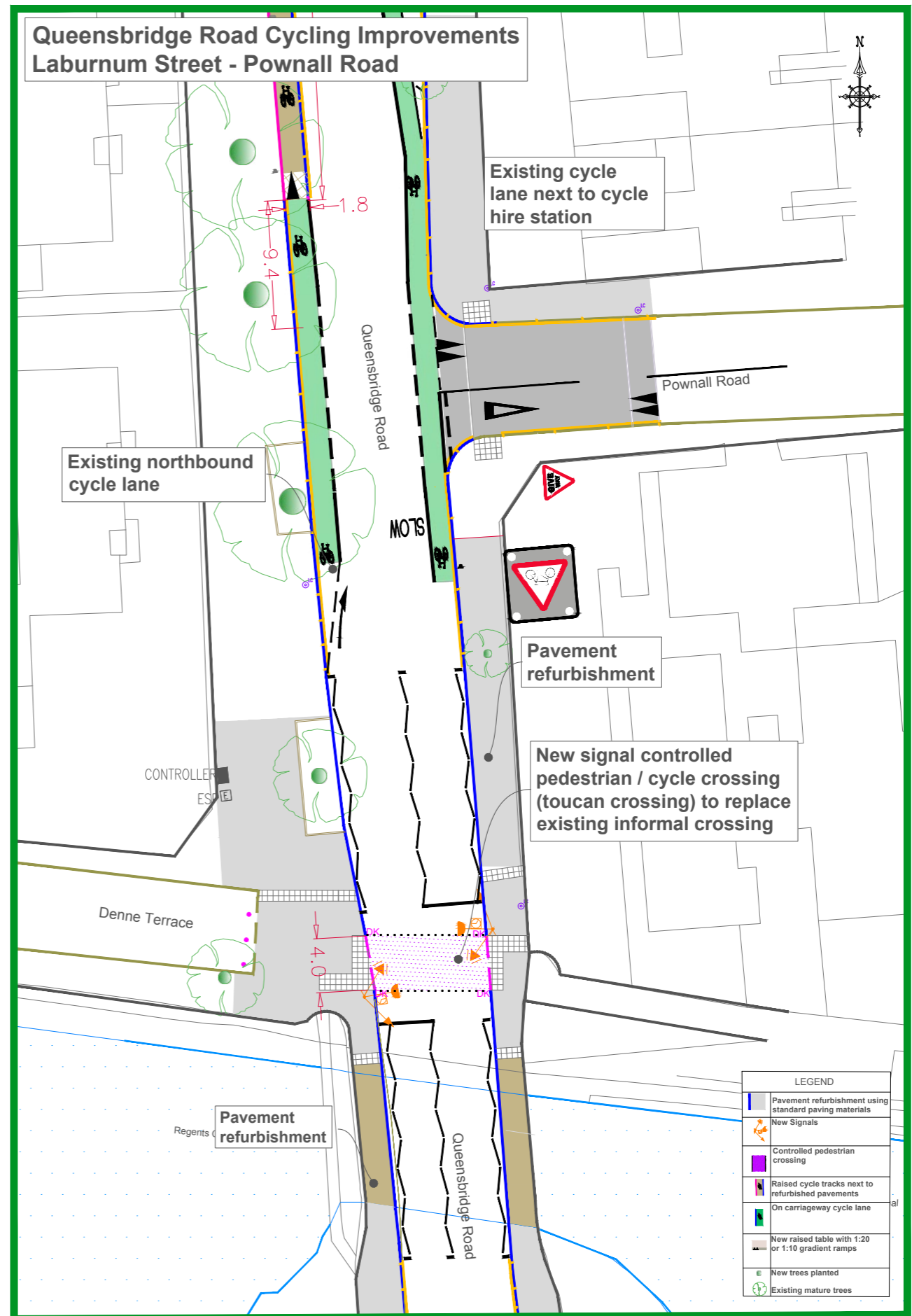
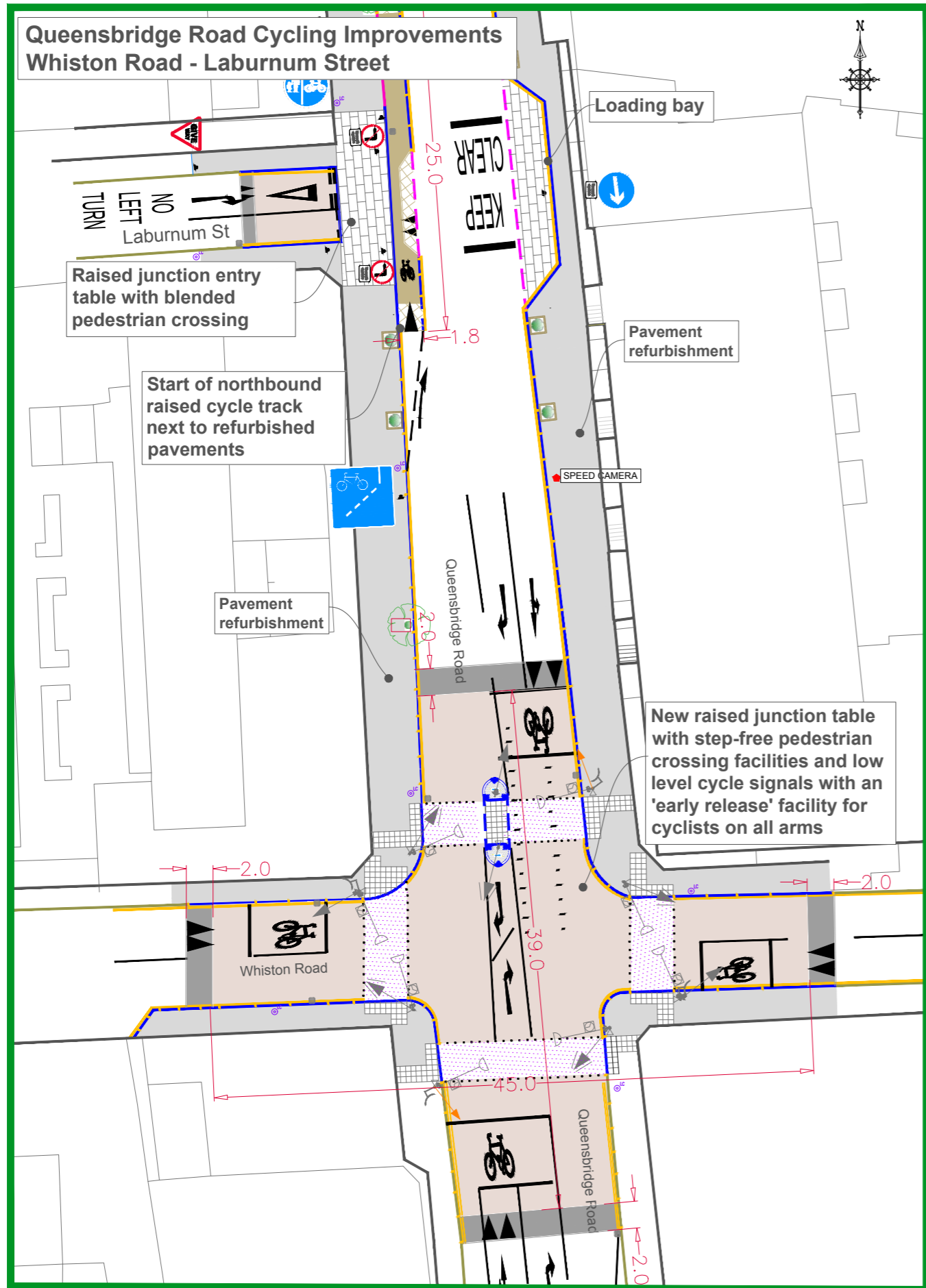
**Lansdowne Drive - Tredenwen Road Junction
Bus gate signage and Improvements**



Advance warning signs for bus gate



New bus gate signs with 7am - 7pm Mon - Sun operational times



LEGEND

| | |
|-------------------------|--|
| [Grey shaded area] | Pavement refurbishment using standard paving materials |
| [Orange square] | New Signals |
| [Purple square] | Controlled pedestrian crossing |
| [Blue dashed line] | Raised cycle tracks next to refurbished pavements |
| [Green dashed line] | On carriageway cycle lane |
| [Brown shaded area] | New raised table with 1:20 or 1:10 gradient ramps |
| [Green circle] | New trees planted |
| [Green circle with dot] | Existing mature trees |

