



AMHURST ROAD AND PEMBURY JUNCTION TRANSFORMATION

Welcome to a new green corridor through the heart of Hackney Central. This transformative initiative will tackle a dangerous junction and polluted road, by cutting traffic and transforming a car-dominated area into a vibrant green community space, connecting Amhurst Road with the high street along the Narrow Way and the bars and shops at Bohemia Place.



The project aims to:

- Improve conditions for pedestrians in the Hackney Central area along Amhurst Road
- Make Hackney Central a greener and more accessible area for residents and visitors
- Create around 1,900sq m of new planting areas, with surface water absorbed into rain gardens rather than being discharged into sewers
- Create more space for pedestrians and provide more direct crossings at Pembury Junction to reduce potential conflicts between pedestrians and vehicles, and between cyclists and vehicles
- Reclaim space from motor traffic for people as part of 23,000sq m of improvements to public spaces, with the potential for increased footfall to benefit local businesses
- Complement the improved gateways into Hackney Central at Hackney Central and Hackney Downs stations.



KEY FEATURES OF THE SCHEME

The Amhurst Road and Pembury Circus project will offer numerous benefits to the community and environment.

Key features:

- The main road along Amhurst Road between Mare Street and Pembury Circus will become a new green route with pocket parks, greenery, and seating.
- Pembury Circus junction will be redesigned to improve how pedestrians, cyclists and buses move safely and easily through the space.
- Through traffic in Hackney Central town centre via Pembury Circus and Amhurst Road will be reduced.



Benefits for public transport users:

- Improved bus journey times.
- Higher footfall for local businesses with an enhanced public realm.



ENVIRONMENTAL AND COMMUNITY BENEFITS

Bringing communities in Hackney Central together and improving air quality on Amhurst Road are key to transforming Amhurst Road and Pembury Circus.

Why we're doing it

Hackney Central is dominated by traffic, with high footfall but poor air quality. Pembury Circus has the highest recorded levels of nitrogen dioxide pollution in Hackney, and Amhurst Road has among the highest levels.

Since 2017, there have been 229 road traffic collisions between Mare Street and Pembury Circus, including 25 serious incidents and two fatalities.

Despite this, 40% of traffic in Hackney is through-traffic with journeys which do not start or end in the borough. Nearly 90% of journeys starting in Hackney are made by walking, cycling, or public transport.

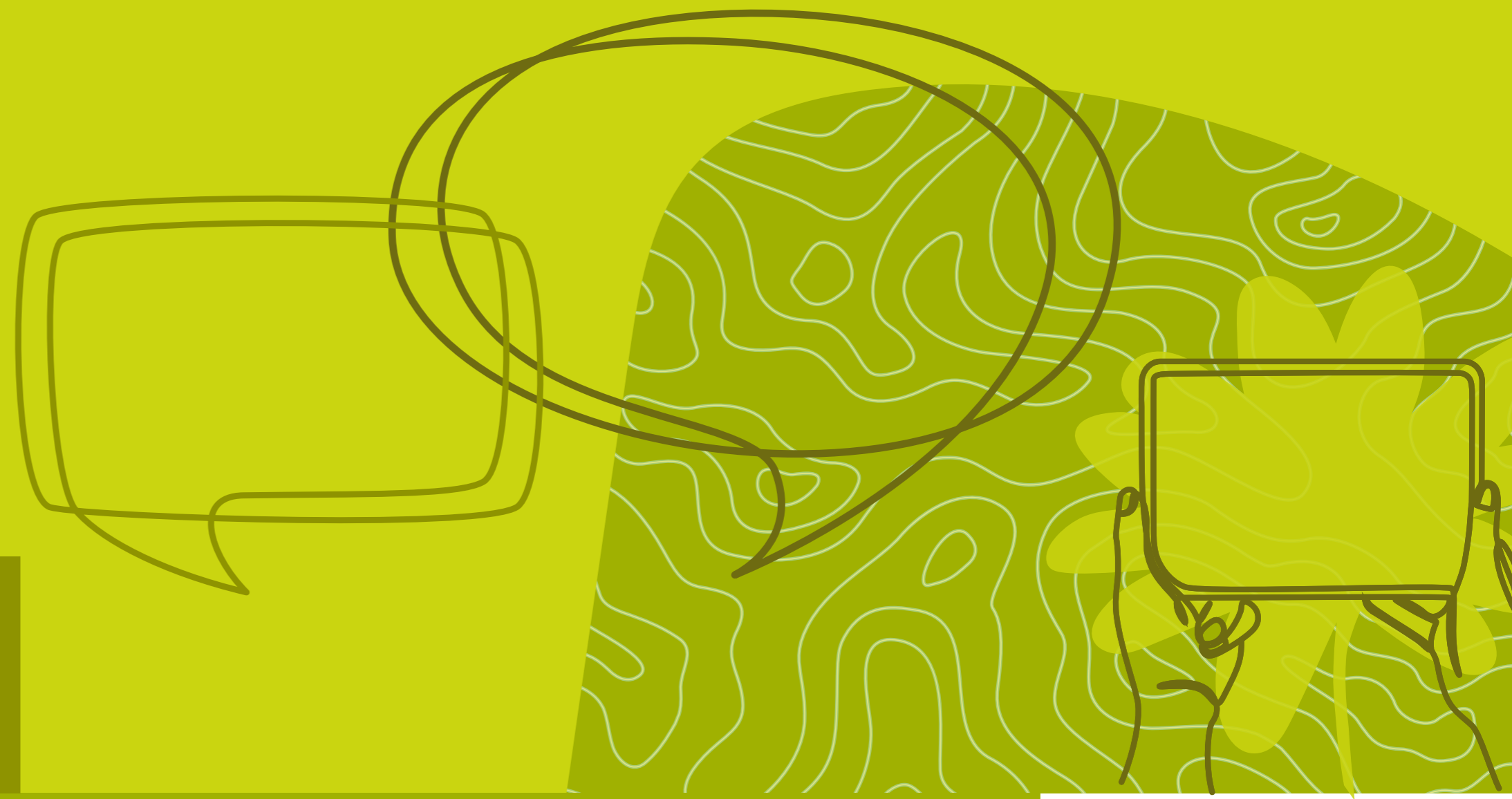
Environmental impact

- The green corridor will enhance urban biodiversity and significantly improve air quality.
- Rain gardens will help manage stormwater and reduce sewer overflow.

Community impact:

- There will be safer and more accessible spaces for pedestrians and cyclists.
- Better public realm will encourage an increase in the amount of time people spend in the area.
- Community feedback from engagement events will be acted on.





PROJECT TIMELINE

AND COMMUNITY ENGAGEMENT

The Amhurst Road project will be implemented in phases to minimise disruption and maximise community benefits.

Implementation timeline:

FEBRUARY 2024
**CONSULTATION
BEGAN**

MARCH 2024
**COMMUNITY
WORKSHOPS**

MARCH-JUNE 2024
**DESIGN
DEVELOPMENT**

JULY 2024 (NOW)
**PRESENTATION
OF DESIGNS**

OCTOBER 2024
**STATUTORY
CONSULTATION**

NOVEMBER 2024
**WORKS EXPECTED
TO BEGIN**

MARCH 2026
**EXPECTED
COMPLETION DATE**



COMMUNITY

ENGAGEMENT AND FEEDBACK

We have conducted extensive engagement activities to ensure the designs for Amhurst Road and Pembury Junction reflect the needs and aspirations of the local community.

Key findings

Pembury Circus

- Safety concerns: broad support for making the area safer for pedestrians and cyclists.
- Public realm enhancements: support for expanding public spaces around Pembury Tavern for outdoor hospitality.
- Project reach: interest in extending improvements to nearby roads, particularly Amhurst Road, Dalston Lane, and Hackney Downs Overground Station entrance.

Amhurst Road:

- Greenery: strong support for enhanced greenery, linking to existing green spaces within the Aspland & Marcon estate.
- Anti-social behaviour: concerns about designing changes to mitigate anti-social behaviour impacts.
- Safety and segregation: support for improved cycling routes, prioritising safety for cyclists and pedestrians.

Hackney Central Station:

- Station arrival experience: positive feedback on the new entrance on Graham Road and interest in similar improvements on the Amhurst Road side.
- Public art and wayfinding: a desire for public art and signage celebrating Hackney's heritage.
- Activating public spaces: suggestions for kiosks, water features, winter activities, and improved cycle parking.

Hackney Central Circus:

- Safety: emphasis on redesigning the Narrow Way junction for pedestrian and cyclist safety.
- Connectivity: suggestions for better connecting Bohemia Place to Amhurst Road and enhancing the pedestrian experience.
- Station access: concerns about the current underwhelming and unsafe entrance to Hackney Central Station on Amhurst Road.

General feedback:

- Surrounding streets impact: concerns about bus gate impacts on streets such as Graham Road, Dalston Lane, and Pembury Road.
- Cycling routes: a preference for clearly demarcated cycle routes over shared spaces.
- Greenery maintenance: support for easy-to-maintain green spaces and regular public realm maintenance.
- Play-on-the-way: support for integrating play features in public spaces, considering proximity to busy routes.

Engagement activities:

- We conducted a six-week engagement programme with ten activities and events to gather community input, including a digital survey, pop-up events, a drop-in session and community workshops.
- **Digital Survey:** launched on 5 February, concluded on 17 March, collecting 1001 responses on key locations and priorities.
- **Pop-up events:** three sessions held at Hackney Central station entrances, engaging residents and visitors. Information boards and materials were presented using an adapted cargo bike.
- **Drop-in Session:** held on 17 February, attended by 31 residents, who interacted with the design team and Hackney Council officers.
- **Community Workshops:** five sessions at Aspland and Marcon Community Centre, attended by 37 participants. Workshops included icebreakers, discussions on design principles, and collaborative mapping exercises.

Through these activities, we engaged over 1,000 local residents, gathering invaluable feedback that has significantly shaped the Amhurst Road designs, as well as the Pembury Junction improvements.

Thank you for your continued engagement and support in making Hackney Central a greener, safer, and more vibrant place.