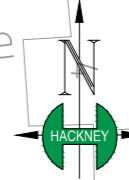


1

CENTRAL LONDON CYCLE GRID RIVINGTON STREET - CYCLE IMPROVEMENTS



Relocate existing permit holder parking bays (4 spaces) to this side of the carriageway to improve alignment for contra-flow cycling

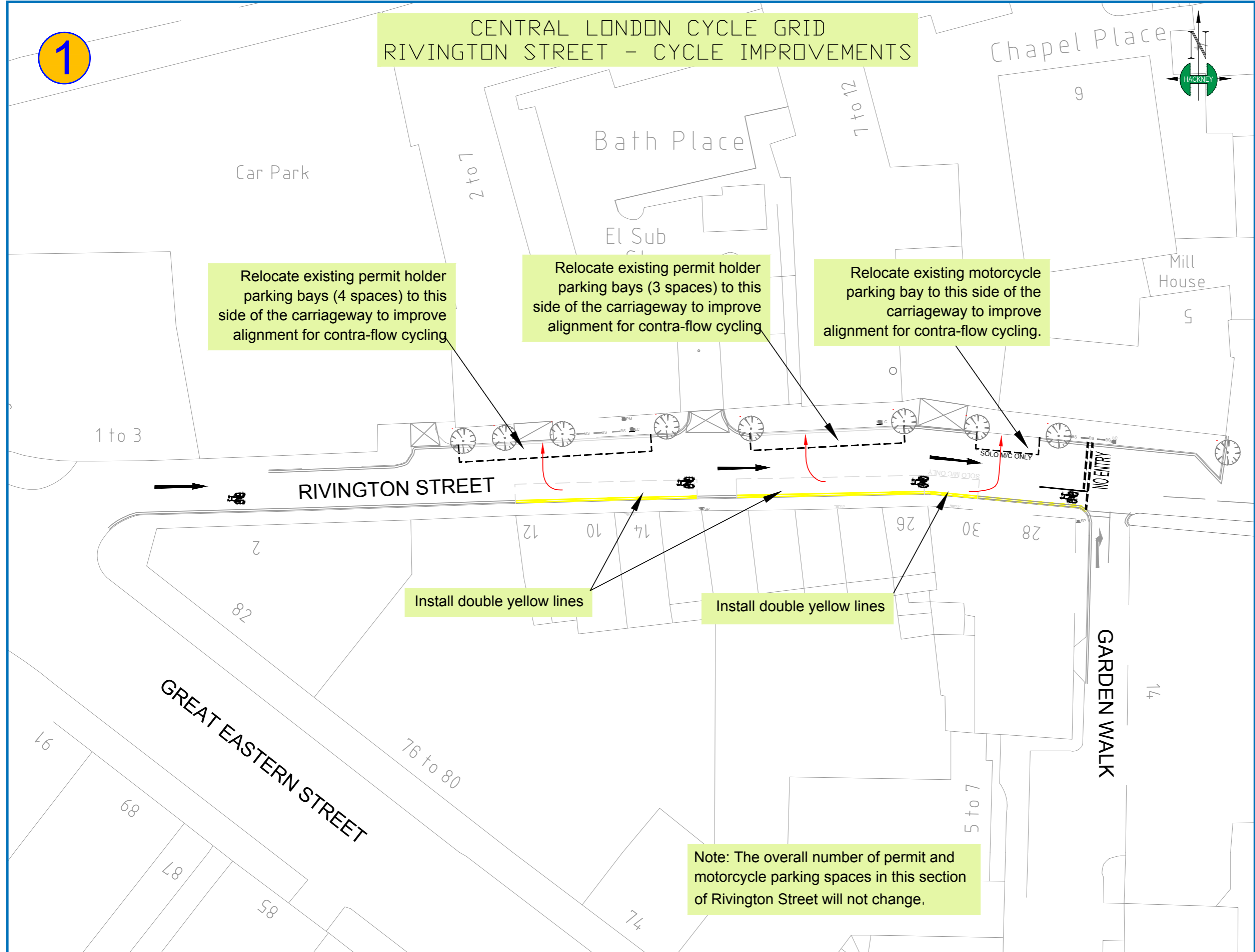
Relocate existing permit holder parking bays (3 spaces) to this side of the carriageway to improve alignment for contra-flow cycling

Relocate existing motorcycle parking bay to this side of the carriageway to improve alignment for contra-flow cycling.

Install double yellow lines

Install double yellow lines

Note: The overall number of permit and motorcycle parking spaces in this section of Rivington Street will not change.

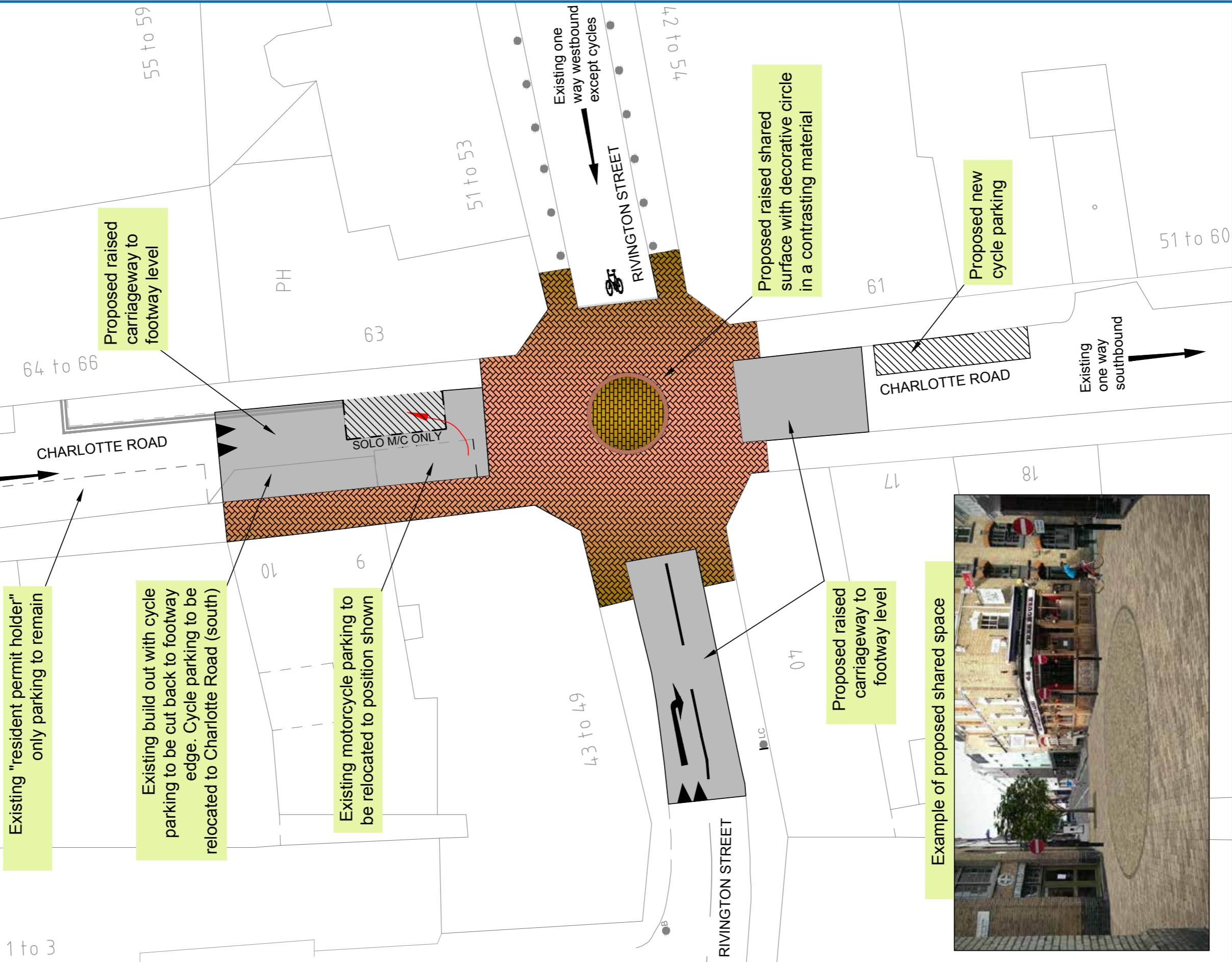
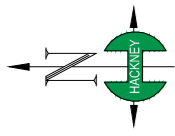


SUPPORTED BY
MAYOR OF LONDON



2

CENTRAL LONDON CYCLE GRID
RIVINGTON STREET - CHARLOTTE ROAD
CYCLE AND PEDESTRIAN IMPROVEMENTS



Example of proposed shared space

SUPPORTED BY
MAYOR OF LONDON

